

CORRECTION

Open Access



Correction: Exploring the potential mechanism of emetine against coronavirus disease 2019 combined with lung adenocarcinoma: bioinformatics and molecular simulation analyses

Kun Zhang, Ke Wang, Chaoguo Zhang, Xiuli Teng, Dan Li and Mingwei Chen*

Correction: *BMC Cancer* 22, 687 (2022)
<https://doi.org/10.1186/s12885-022-09763-2>

Following publication of the original article [1], the authors identified a production error. Figure 8 was not correctly processed by the publisher. The correct version of figure 8 is supplied in this correction article.

Published online: 27 July 2022

Reference

1. Zhang K, Wang K, Zhang C, et al. Exploring the potential mechanism of emetine against coronavirus disease 2019 combined with lung adenocarcinoma: bioinformatics and molecular simulation analyses. *BMC Cancer*. 2022;22:687. <https://doi.org/10.1186/s12885-022-09763-2>.

The original article can be found online at <https://doi.org/10.1186/s12885-022-09763-2>.

*Correspondence: chenmw36@163.com

Department of Respiratory and Critical Care Medicine, First Affiliated Hospital of Xi'an Jiaotong University, No. 277 Yanta West Road, Xi'an 710061, Shaanxi Province, China



© The Author(s) 2022. **Open Access** This article is licensed under a Creative Commons Attribution 4.0 International License, which permits use, sharing, adaptation, distribution and reproduction in any medium or format, as long as you give appropriate credit to the original author(s) and the source, provide a link to the Creative Commons licence, and indicate if changes were made. The images or other third party material in this article are included in the article's Creative Commons licence, unless indicated otherwise in a credit line to the material. If material is not included in the article's Creative Commons licence and your intended use is not permitted by statutory regulation or exceeds the permitted use, you will need to obtain permission directly from the copyright holder. To view a copy of this licence, visit <http://creativecommons.org/licenses/by/4.0/>. The Creative Commons Public Domain Dedication waiver (<http://creativecommons.org/publicdomain/zero/1.0/>) applies to the data made available in this article, unless otherwise stated in a credit line to the data.

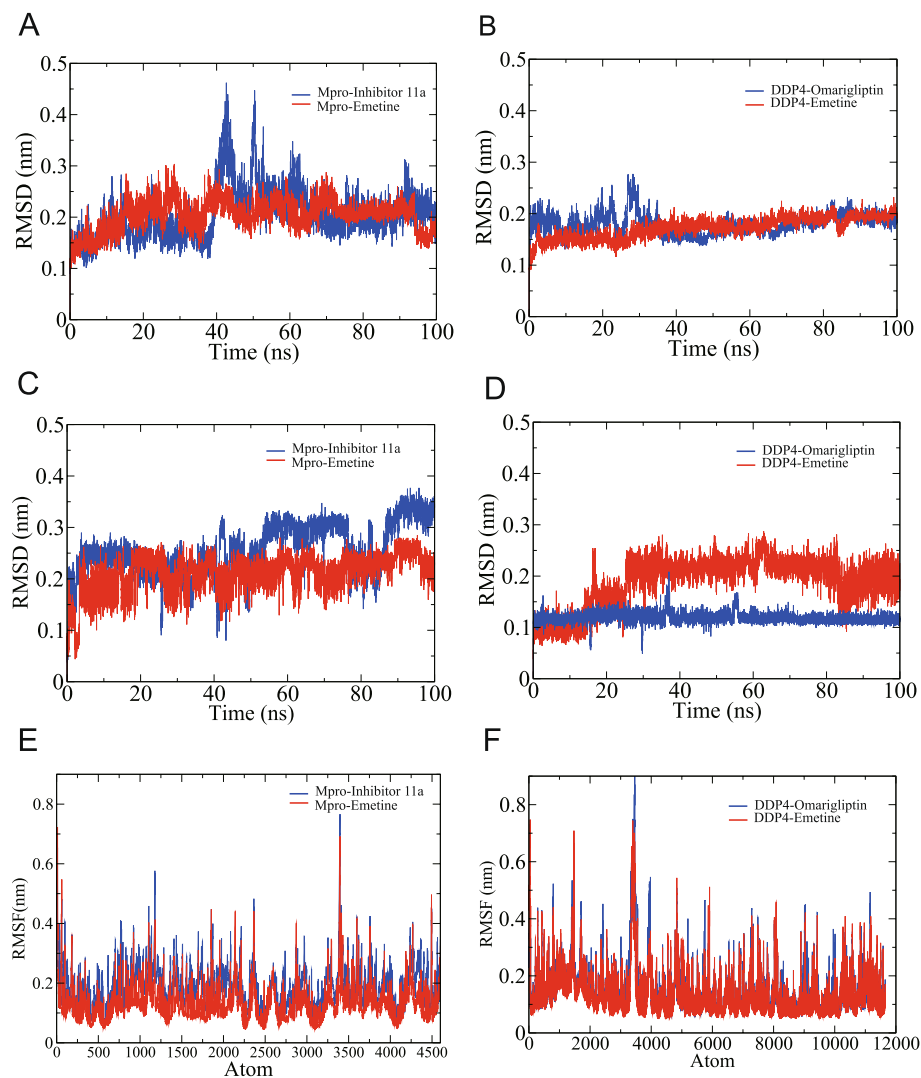


Fig. 8 RMSD and RMSF of the SARS-CoV-2 Mpro complexes and DDP4 complexes. **A** The RMSD of Mpro. **B** The RMSD of DDP4. **C** The RMSD of inhibitor 11a and emetine. **D** The RMSD of omarigliptin and emetine. **E** The RMSF of Mpro. **F** The RMSF of DDP4