

RESEARCH ARTICLE

Open Access



# Effects of PKM2 on global metabolic changes and prognosis in hepatocellular carcinoma: from gene expression to drug discovery

Wen-Wen Lv<sup>1,2†</sup>, Dahai Liu<sup>3†</sup>, Xing-Cun Liu<sup>4†</sup>, Tie-Nan Feng<sup>1,2</sup>, Lei Li<sup>1,2</sup>, Bi-Yun Qian<sup>1,2\*</sup> and Wen-Xing Li<sup>5,6\*</sup> 

## Abstract

**Background:** Hepatocellular carcinoma (HCC) is a malignant tumor that threatens global human health. High PKM2 expression is widely reported in multiple cancers, especially in HCC. This study aimed to explore the effects of PKM2 on global gene expression, metabolic damages, patient prognosis, and multiple transcriptional regulation relationships, as well as to identify several key metabolic genes and screen some small-molecule drugs.

**Methods:** Transcriptome and clinical HCC data were downloaded from the NIH-GDC repository. Information regarding the metabolic genes and subsystems was collected from the Recon 2 human metabolic model. Drug-protein interaction data were obtained from the DrugBank and UniProt databases. We defined patients with PKM2 expression levels  $\geq 11.25$  as the high-PKM2 group, and those with low PKM2 expression ( $< 11.25$ ) were defined as the low-PKM2 group.

**Results:** The results showed that the global metabolic gene expression levels were obviously divided into the high- or low-PKM2 groups. In addition, a greater number of affected metabolic subsystems were observed in the high-PKM2 group. Furthermore, we identified 98 PKM2-correlated deregulated metabolic genes that were associated with poor overall patient survival. Together, these findings suggest more comprehensive influences of PKM2 on HCC. In addition, we screened several small-molecule drugs that target these metabolic enzymes, some of which have been used in antitumor clinical studies.

**Conclusions:** HCC patients with high PKM2 expression showed more severe metabolic damage, transcriptional regulation imbalance and poor prognosis than low-PKM2 individuals. We believe that our study provides valuable information for pathology research and drug development for HCC.

**Keywords:** Hepatocellular carcinoma, PKM2, Metabolic, Overall survival, Drugs

\* Correspondence: [qianbiyun@shsmu.edu.cn](mailto:qianbiyun@shsmu.edu.cn); [liwenxing2016@gmail.com](mailto:liwenxing2016@gmail.com)

<sup>†</sup>Wen-Wen Lv, Dahai Liu and Xing-Cun Liu contributed equally to this work.

<sup>1</sup>Hongqiao International Institute of Medicine, Shanghai Tongren Hospital/ Faculty of Public Health, Shanghai Jiao Tong University School of Medicine, Shanghai 200025, China

<sup>5</sup>Key Laboratory of Animal Models and Human Disease Mechanisms, Kunming Institute of Zoology, Chinese Academy of Sciences, Kunming 650223, Yunnan, China

Full list of author information is available at the end of the article



## Background

Hepatocellular carcinoma (HCC) is one of the two major forms of primary liver cancer and accounts for 85–90% of all primary liver cancers [1]. HCC is typically caused by viral hepatitis infection or fatty liver disease. Cryptogenic cirrhosis, which is frequently linked with nonalcoholic steatohepatitis (NASH) / nonalcoholic fatty liver disease (NAFLD) in patients with metabolic syndrome, diabetes and obesity, is an increasingly significant cause of HCC [2]. Furthermore, metabolic syndrome itself is also a strong risk factor for HCC [3]. Increasing evidence suggests that diabetes is an independent risk factor for HCC [4], particularly diabetes controlled by diet, insulin or sulfonylureas [5]. Additionally, a series of metabolic alterations in HCC, including elevated glycolysis, gluconeogenesis, and  $\beta$ -oxidation levels and reduced tricarboxylic acid cycle and D-12 desaturase levels, were observed [6].

Pyruvate kinase (PK) catalyzes the last and physiologically irreversible step in glycolysis, the conversion of phosphoenol pyruvate (PEP) to pyruvate via the transfer of a phosphate group to ADP [7]. In mammals, four PK isoforms exist that are encoded by two genes. The PKLR gene encodes PKL and PKR [8]. The former is exclusive to erythrocytes, and the latter is expressed primarily in the liver, with low expression in the kidney. The PKM1 and PKM2 isoforms are encoded by PKM through alternative splicing of the mutually exclusive exons 9 and 10, which generate 56-amino acid regions that differ at 22 residues [7, 8]. PKM1 is mainly expressed in brain, heart, and muscle tissue, whereas PKM2 is expressed in most tumor cells, embryonic tissue and many adult tissues, including the kidney, spleen, lung and intestine [7, 9]. PKM2 plays a central role in maintaining the metabolism program of cancer cells and other proliferating cell types and is over-expressed in a broad range of human cancers [7].

High PKM2 expression is correlated with poor prognosis for patients with multiple types of solid tumors compared with the prognosis of patients with low PKM2 expression levels [10, 11]. Our previous study also found high PKM2 expression is independently associated with poor overall survival in HCC patients [12]. The knock-down of PKM2 in HCC cells inhibited cell proliferation and induced apoptosis *in vitro* and *in vivo* [13]. Furthermore, PKM2 plays critical in Warburg effect, gene expression, cell cycle progression and many other fundamental cellular functions and is highlighted as an important integrator of diverse cellular stimuli to modulate metabolic flux and cancer cell proliferation [14]. Recent studies found that PKM2 is the dominant form highly expressed in HCC and is a direct target of miR-122, which serves as a prognostic biomarker and induces apoptosis and growth arrest by downregulating PKM2 in HCC [15, 16].

Establishment of a human metabolic model provided considerable data support and systematic analytical methods for human metabolic disease research [17]. In this study, we obtained information regarding all human metabolic genes and metabolic subsystems from the Recon2 human metabolic model [18]. Considering that HCC is a metabolic disease, we aimed to explore the associations between PKM2 expression and overall metabolic changes in HCC, identify several risk metabolic genes and discover some drugs.

## Methods

### Data collection

HCC RNA-seq and clinical data were downloaded from the NIH-GDC repository (<https://portal.gdc.cancer.gov/>) and cBioPortal (<http://www.cbioportal.org/>) databases [19]. In total, we downloaded TCGA level 3 data that included 371 primary hepatocellular carcinoma patients and 50 controls. All samples were analyzed by Illumina HiSeq 2000 RNA Sequencing Version 2. RNA-seq by expectation-maximization (RSEM) expression values were used for statistical analysis. We divided all HCC samples into two groups according to their log<sub>2</sub>-converted median expression of PKM2 (11.25). Case samples with PKM2 expression  $\geq 11.25$  comprised the high-PKM2 group, and those with low PKM2 expression ( $< 11.25$ ) comprised the low-PKM2 group. PKM2 copy number data were downloaded from the cBioPortal database and PKM2 promoter methylation data were obtained from MethHC (<http://methhc.mbc.nctu.edu.tw/php/search.php?opt=gene>). The methylation data contains 204 HCC patients and 49 controls, and the copy number data contains 364 HCC patients but no controls. We mapped these samples to the transcriptome data and compared the difference among controls, low-PKM2 patients and high-PKM2 patients. The validation datasets of GSE14520 (contributed by Roessler S, including 225 patients) and GSE25097 (contributed by Tung EK, including 268 patients) were downloaded from NCBI-GEO (<https://www.ncbi.nlm.nih.gov/geo/>). We used these two datasets to verify the effect of PKM2 on global metabolic gene expression.

### Preprocessing and differential expression analysis

R statistical software v3.3.3 was used to perform data preprocessing. We removed genes with median expression values = 0 in all patients. In total, we filtered 16706 genes in 371 HCC patients and 50 controls. All expression values were log<sub>2</sub>-transformed. Human metabolic genes were extracted from the Recon 2 human metabolism model (<https://www.vmh.life/>). This model contains 1789 unique genes that belong to 99 metabolic subsystems. We mapped 1492 metabolic genes and 95 subsystems in our HCC data. Differentially expressed gene

analysis between HCC patients and controls in the high- and low-PKM2 groups was performed using the empirical Bayes algorithm (function “eBayes”) in the “limma” package [20]. Differences (up- or down-regulated) were considered statistically significant for absolute value  $\log_2$ -transformed fold-changes  $\geq 1$  and false discovery rate (FDR) adjusted  $P$  values  $\leq 0.05$ .

#### Metabolic subsystem enrichment and correlation analysis

We used javaGSEA desktop application v3.0 (<http://software.broadinstitute.org/gsea/index.jsp>) [21] to perform gene set enrichment analysis (GSEA) of the mapped metabolic subsystems in high-PKM2 vs. controls, low-PKM2 vs. controls and high-PKM2 vs. low PKM2. Gene sets with less than 10 genes or more than 500 genes were excluded. The t-statistic mean of the genes was computed in each metabolic subsystem using a permutation test with 1000 replications. Subsystems with normalized enrichment scores (NESs)  $> 0$  were considered up-regulated, and subsystems with NESs  $< 0$  were considered down-regulated. Statistical significance was identified as  $P$  values  $\leq 0.05$ . A univariate correlation model was used to analyze correlation between PKM2 and other metabolic genes in high- and low-PKM2 patients. Genes with absolute correlation coefficient values  $\geq 0.5$  and  $P$  values  $\leq 0.05$  were considered significant.

#### Single gene and gene interaction survival analyses

We used Venn diagrams to show the overlapping genes among the up-regulated and PKM2-positively correlated genes as well as the down-regulated and PKM2-negatively correlated genes in the high- and low-PKM2 groups. All survival analyses were conducted using “survival” package in R. A Cox proportional hazards model was used to estimate the independent effects of these overlapping genes on the total overall survival of the HCC patients. Each gene was divided into two groups according to its median expression. Patients with gene expression levels less than the median comprised the low-expression group, and those with gene expression levels higher than the median comprised the high-expression group. The reference group of up-regulated genes was defined as patients in the low-expression group, and the reference group of down-regulated genes was defined as patients in the high-expression group. According to our grouping, genes with hazard ratios (HRs)  $> 1$  were considered risk factors. Conversely, genes with HRs  $< 1$  were considered protective factors. To explore the effect of interactions between PKM2 and metabolic genes on patients’ overall survival, we used Cox proportional hazards model to perform interaction survival analysis of PKM2 and metabolic genes that uncorrelated with PKM2. We screened these uncorrelated genes that were not affect patients’ prognosis alone and no expression difference in high- or low-PKM2 patients

compared to controls. The “simPH” package [22] in R was used to simulate and plot quantities of interactions from Cox proportional hazard models. The Kaplan-Meier curves were used to show the difference of these interactions on patients’ survival. A  $P$  value  $\leq 0.05$  was considered as significant.

#### Transcriptional regulatory network analysis

Using the analysis described above, we defined overlapping genes with survival differences as risk metabolic genes. We used the TRRUST v2.0 web server [23] to find the transcription factors (TFs) targeting these genes. TRRUST v2.0 is a manually curated database of human and mouse transcriptional regulatory networks. It contains 9,996 TF-target regulatory relationships for 824 human TFs and provides information regarding the regulation type (such as activation or repression) between the queried TFs and target genes (<http://www.grnpedia.org/trust/>). All these relationships were derived from PubMed articles. We used these TFs and risk metabolic genes to construct transcriptional regulatory networks (TRNs) in high- and low-PKM2 groups. Because the transcriptional regulation information of multiple risk metabolic genes is not recorded in the database, the co-expression method was used to construct TRNs. The correlation coefficients of these TFs and risk metabolic genes were calculated in each group, and the TF-target pairs with absolute value of correlation coefficients  $\geq 0.5$  and FDR  $P$ -values  $\leq 0.05$  were selected to construct the TRN.

#### Construction of the risk metabolic genes and drug network

We used these risk metabolic genes and drugs that target these proteins to construct the network. Information regarding the drugs and targeting proteins was downloaded from the DrugBank database (<https://www.drugbank.ca/>) [24]. Because the records in the DrugBank database are protein IDs and drugs interactions, we used UniProt (<http://www.uniprot.org/>) to find the protein IDs corresponding to these risk metabolic genes. By combining the DrugBank and UniProt databases, we obtained 14834 gene-protein-drug interactions in total, including 2127 unique genes and 6255 unique drugs. We extracted the interactions of risk metabolic genes and drugs and used Cytoscape v3.4.0 to visualize the network.

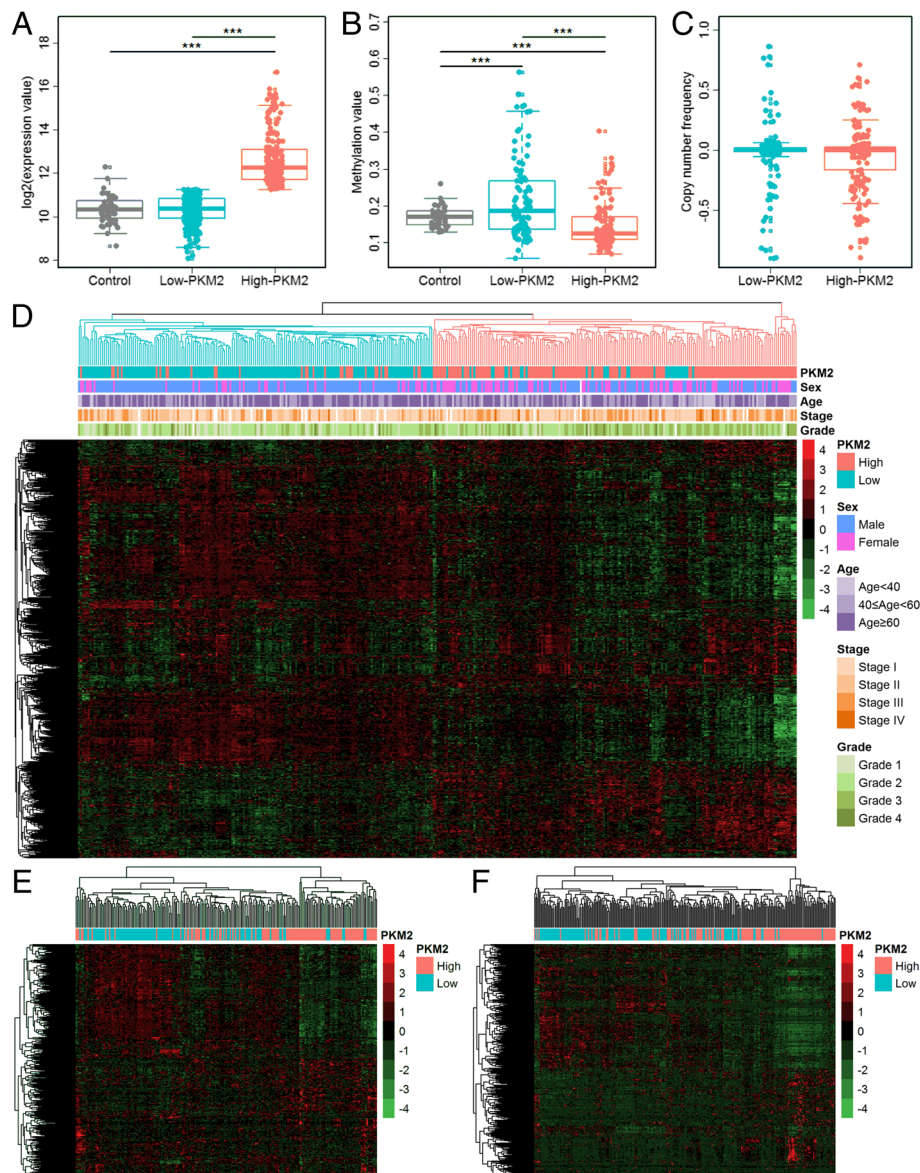
## Results

#### Global metabolic gene expression levels were different in the high- and low-PKM2 groups

We calculated differentially expressed genes in high- and low-PKM2 patients (Additional file 1: Tables S1 and S2). In total, 4521 and 3314 deregulated genes were identified in high- and low-PKM2 patients, respectively. Figure 1 showed the global metabolic gene expression levels in the

high- and low-PKM2 groups. The expression of PKM2 in low-PKM2 patients was similar to that of the controls; however, the expression of PKM2 in high-PKM2 patients was significantly higher than that of the controls (Fig. 1a). Furthermore, the methylation value of PKM2 in low-PKM2 patients were higher than the controls, whereas the

methylation value of PKM2 in high-PKM2 patients were significantly lower than the controls and the low-PKM2 patients (Fig. 1b). However, there was no difference of copy number variation between high- and low-PKM2 patients (Fig. 1c). These results suggested that the PKM2 expression was consistent with the methylation status. The



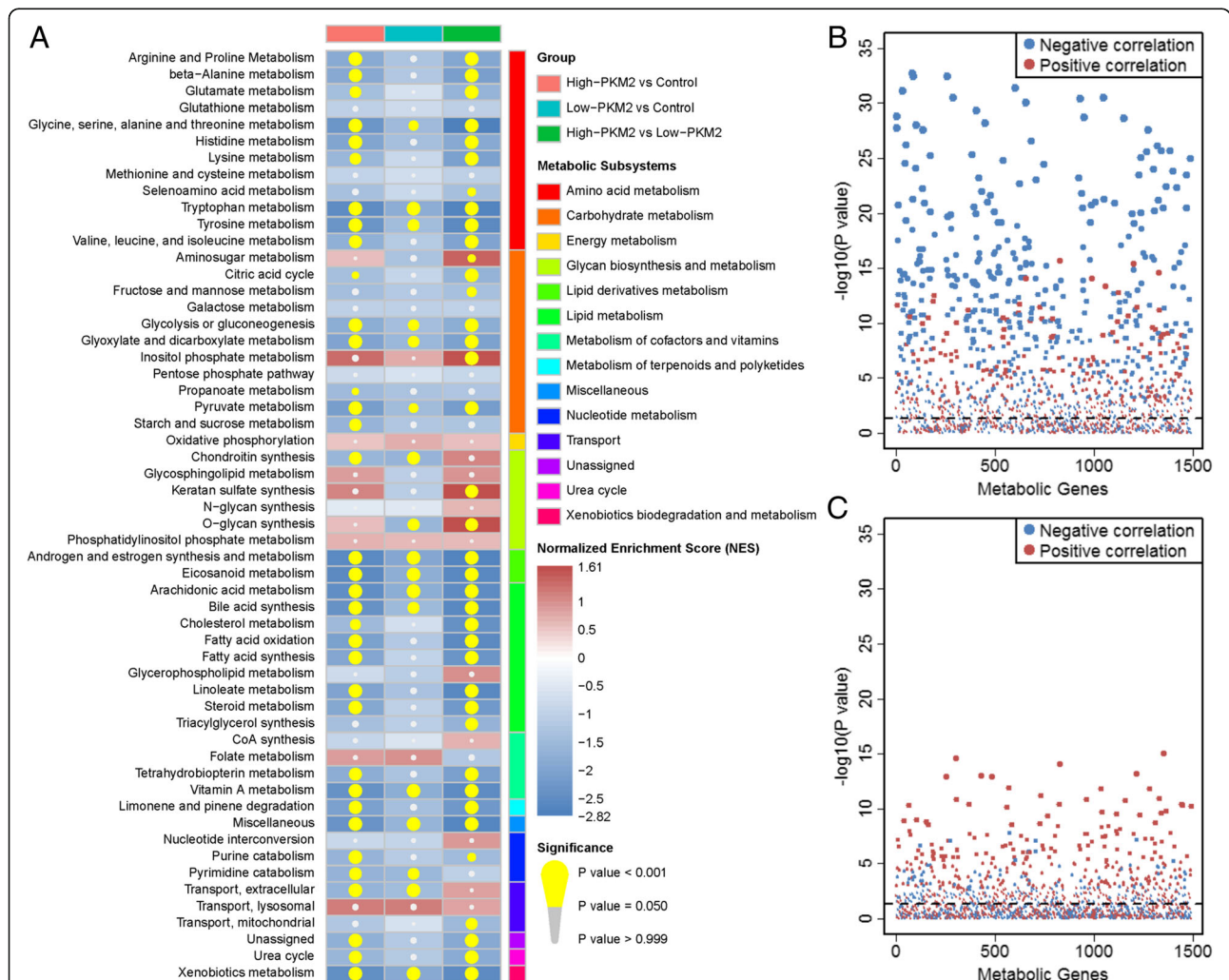
**Fig. 1** PKM2 and metabolic gene expression profiles. **a** The expression levels of PKM2 in low-PKM2 ( $< 11.25$ ) patients (light blue) were similar to the controls (gray), whereas the expression levels of PKM2 in high-PKM2 ( $\geq 11.25$ ) patients (red) were significantly higher than the controls. **b** Methylation value of PKM2 in low-PKM2 patients (light blue) were higher than the controls (gray), whereas the methylation value of PKM2 in high-PKM2 patients (red) were significantly lower than the controls and the low-PKM2 patients. **c** There was no difference of copy number variation between high- and low-PKM2 patients. **d** Heatmap of 1492 metabolic genes in 371 patients (TCGA data). The hierarchical clustering results suggested the expression levels of global metabolic genes were divided into clustering group I (blue) and clustering group II (red). Statistical difference of PKM2 expression, sex, age, grade and stage between the two groups showed in Additional file 1: Tables S3 and S4. **e** Heatmap of 1319 metabolic genes in 225 patients (GSE14520, validation dataset 1). **f** Heatmap of 1490 metabolic genes in 268 patients (GSE25097, validation dataset 2). These two hierarchical clustering results validated the expression profiles of metabolic genes were different between high- and low-PKM2 patients. Statistical significance: \*  $P < 0.05$ , \*\*  $P < 0.01$ , \*\*\*  $P < 0.001$



expression profiles of 1492 metabolic genes in 371 HCC patients showed in Fig. 1d. Through hierarchical clustering, the expression levels of global metabolic genes were divided into two groups. We compared the PKM2 expression, sex, age, stage and grade between the two clustering groups and found most of patients with low-PKM2 expression were in clustering group I and patients with high-PKM2 expression were mainly in clustering group II. This significant difference is independent with other clinical variables (Additional file 1: Tables S3 and S4). Furthermore, the hierarchical clustering results of other two validation datasets (GSE14520 and GSE25097) showed similar trends (Fig. 1e and f). All these results suggested that PKM2 was correlated with the expression of global metabolic genes.

**Patients in the high-PKM2 group showed more severe metabolic abnormalities**

The enriched metabolic subsystems in high-PKM2 vs. controls, low-PKM2 vs. controls and high-PKM2 vs. low-PKM2 showed in Fig. 2a. The original results for GSEA showed in Additional file 1: Table S5. There were 35 down-regulated metabolic subsystems in high-PKM2 vs. controls, whereas only 17 down-regulated metabolic subsystems in low-PKM2 vs. controls. No up-regulated metabolic subsystem was found in high-PKM2 vs. controls or low-PKM2 vs. controls. Furthermore, there were 4 up-regulated and 34 down-regulated metabolic subsystems in high-PKM2 vs. low-PKM2. There have similar trends of down-regulated metabolic subsystems in high-PKM2 vs. controls and high-PKM2 vs. low-PKM2.



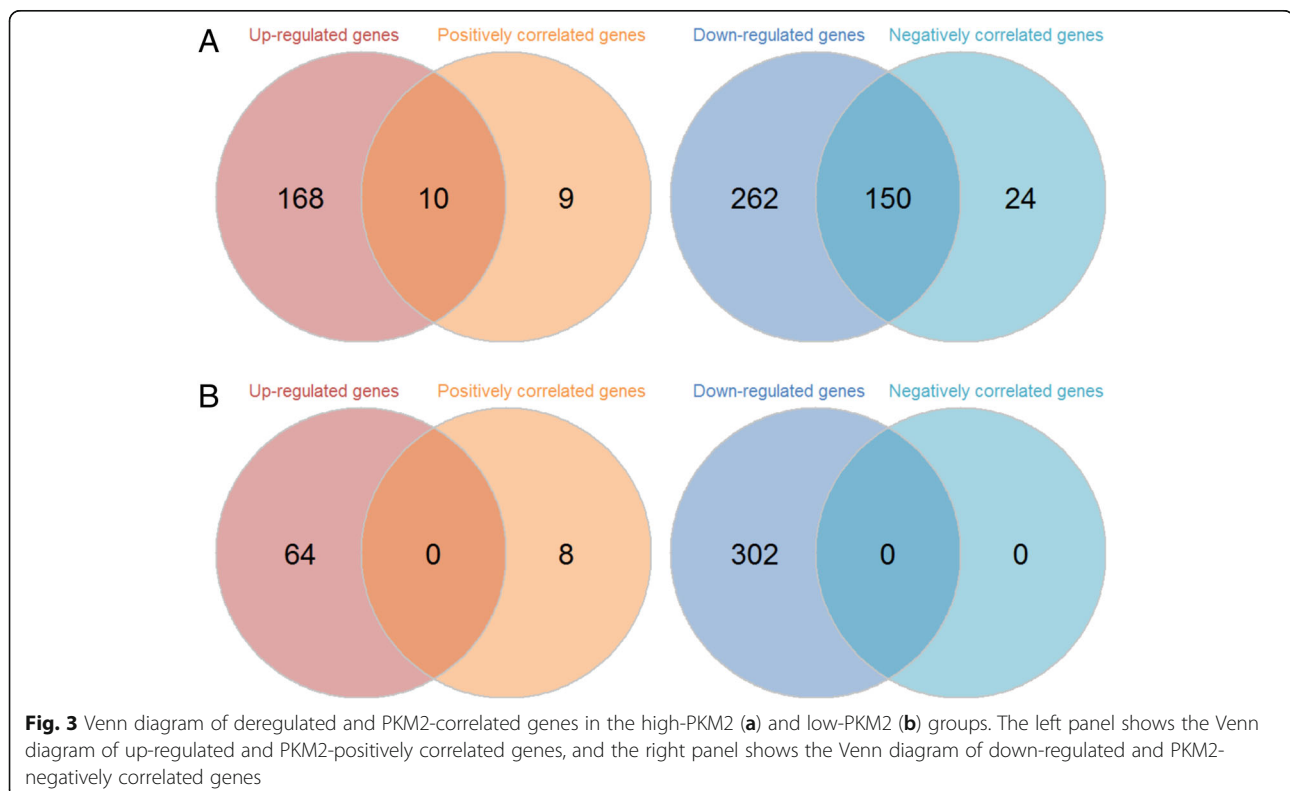
**Fig. 2** Metabolic subsystem enrichment results and correlation between PKM2 and metabolic genes. **a** Metabolic subsystem enrichment analysis of high-PKM2 vs. controls, low-PKM2 vs. controls and high-PKM2 vs. low-PKM2. The red box represents the metabolic subsystem is up-regulated and the blue box represents the metabolic subsystem is down-regulated. The yellow circle indicates the metabolic subsystem is significantly enriched. **b** Correlation of PKM2 and metabolic genes in the high-PKM2 group. **c** Correlation of PKM2 and metabolic genes in the low-PKM2 group. The red points represent positive correlations, and the blue points represent negative correlations. The absolute values of the correlation coefficients are represented by the size of the points. The horizontal dashed line shows the significant level ( $P \leq 0.05$ )

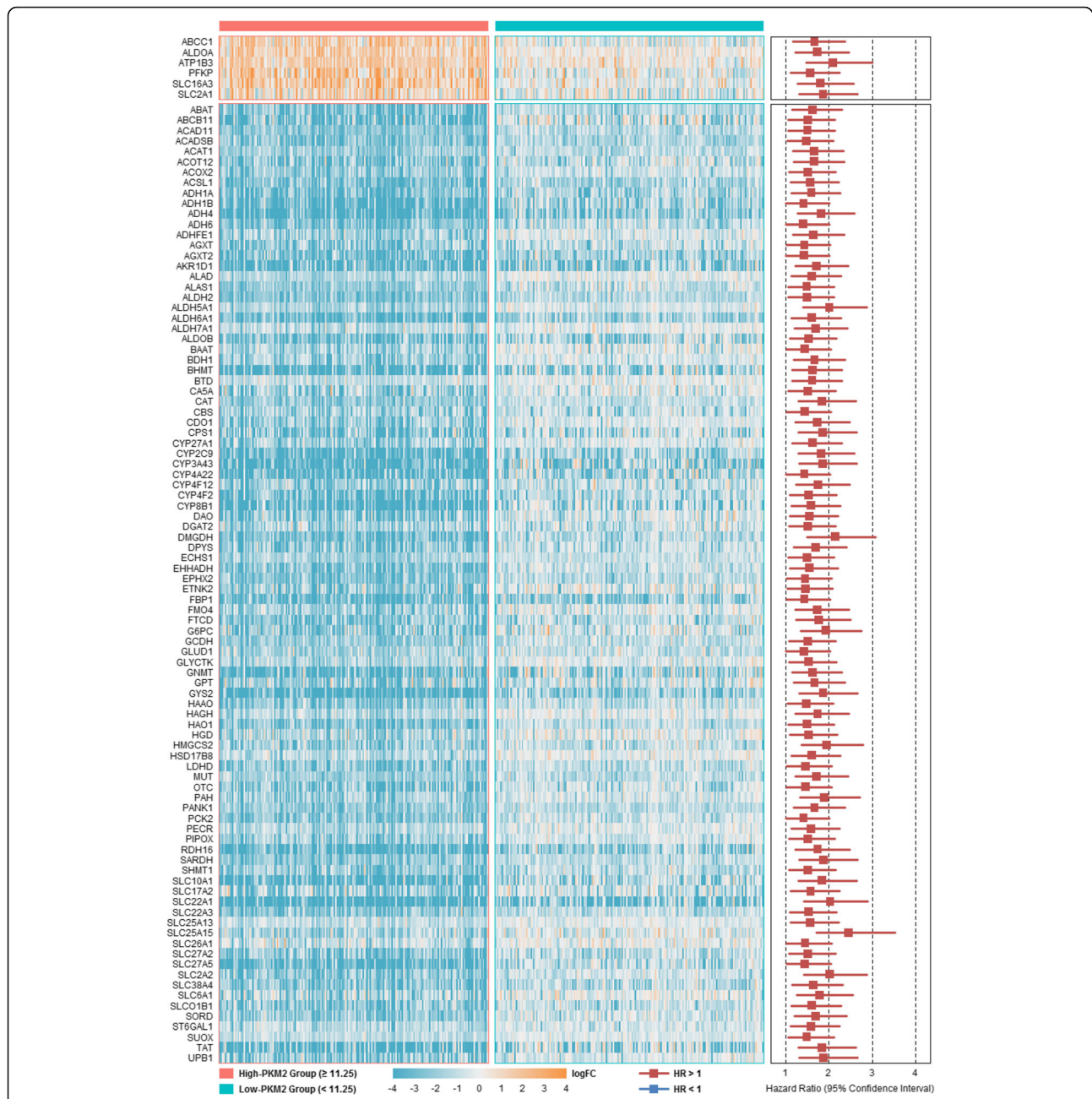
The results showed that most of these subsystems were associated with amino acid metabolism, carbohydrate metabolism, lipid and lipid derivatives metabolism. Correlations between PKM2 and other metabolic genes in the high- and low-PKM2 groups showed in Fig. 2b and c, respectively. Details of the correlation coefficients and *P* values in all the metabolic genes in the two groups listed in Additional file 1: Tables S6 and S7. According to our screening criteria, 19 PKM2-positively correlated genes and 174 PKM2-negatively correlated genes were identified in the high-PKM2 group. However, only 8 PKM2-positively correlated genes and no PKM2-negatively correlated genes were observed in the low-PKM2 group. We further screened common genes between up-regulated and PKM2-positively correlated genes and between down-regulated and PKM2-negatively correlated genes in the high- and low-PKM2 groups (Fig. 3). The results showed that 160 common genes existed in the high-PKM2 group. However, no common genes were observed in the low-PKM2 group. These results suggested that patients with high PKM2 expression suffer more serious metabolic damage compared with that of low-PKM2 patients.

#### PKM2-correlated deregulated genes associated with poor overall survival

We performed survival analysis using the above mentioned 160 PKM2-correlated deregulated genes in all

HCC patients (Additional file 1: Tables S8 and S9). Among these 160 genes, 98 genes (including 6 up-regulated genes and 92 down-regulated genes) were significantly correlated with overall patient survival. Therefore, we classified these 98 genes as risk metabolic genes, which were deregulated and had survival risks in all patients. Figure 4 shows the personalized fold changes (The gene expression values for each patient/mean expression of the gene in controls) in the high- and low-PKM2 groups as well as the survival risks of these 98 genes. Interestingly, these genes all showed worse overall survival in high-PKM2 patients than in low-PKM2 patients. Furthermore, we screened 462 metabolic genes that was no correlation with PKM2, and these genes showed no expression or survival difference in HCC patients. We performed interactive survival analysis of these uncorrelated metabolic genes with PKM2 (Additional file 1: Table S10). The results showed that there were 36 significantly interactions (interaction  $P < 0.05$ ). We screened top 6 interactions based on the decreasing order of interaction *P* values and plotted the quantities of interactions (Fig. 5a-f). The Kaplan-Meier curves of PKM2 and uncorrelated metabolic genes also showed significance (Fig. 5g-h). These results suggested that the interactions of PKM2 with metabolic genes have significant effects on patients' overall survival.



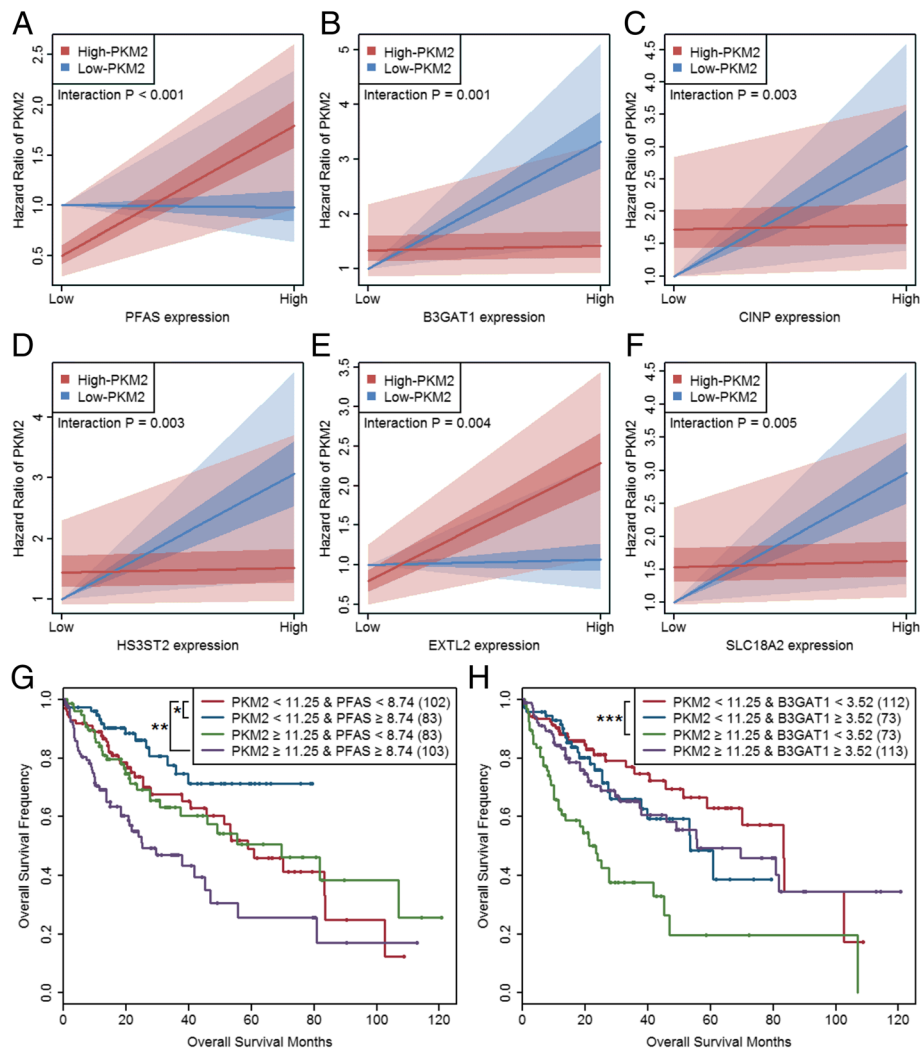


**Fig. 4** Personalized expression and survival analysis of PKM2-correlated deregulated genes. The heatmap shows the personalized log<sub>2</sub> fold changes of these genes in the high-PKM2 ( $\geq 11.25$ ) and low-PKM2 ( $< 11.25$ ) groups. The personalized fold changes were calculated as the gene expression values for each patient/mean expression of the gene in controls. For survival analysis, the reference group of up-regulated genes was defined as patients with levels below the median expression level of the gene, and the reference group of down-regulated genes was defined as patients with levels higher than the median expression level of the gene

**Transcriptional regulatory networks of risk metabolic genes were related to PKM2 expression**

Transcriptional regulatory relationships of TFs and the risk metabolic genes in high- and low-PKM2 group were showed in Fig. 6a and b. There were 232 nodes in the high-PKM2 group and 175 nodes in the low-PKM2 group. The average number of neighbors is 8.267 in the

high-PKM2 group and 2.857 in the low-PKM2 group. Furthermore, the neighborhood connectivity in high-PKM2 group were higher than low-PKM2 group (Fig. 6c and d). From the perspective of network connectivity and complexity, the transcriptional regulation relationships of TFs and risk metabolic genes were stronger in the high-PKM2 group than in the low-PKM2 group.



**Fig. 5** Interaction survival analysis of PKM2 and PKM2-uncorrelated metabolic genes. **a** Quantities of interaction between PKM2 and PFAS on patients' overall survival. **b** Quantities of interaction between PKM2 and B3GAT1 on patients' overall survival. **c** Quantities of interaction between PKM2 and C1NP on patients' overall survival. **d** Quantities of interaction between PKM2 and HS3ST2 on patients' overall survival. **e** Quantities of interaction between PKM2 and EXTL2 on patients' overall survival. **f** Quantities of interaction between PKM2 and SLC18A2 on patients' overall survival. **g** Kaplan-Meier curves of PKM2 and PFAS on patients' overall survival. **h** Kaplan-Meier curves of PKM2 and B3GAT1 on patients' overall survival. All these PKM2-uncorrelated genes showed no expression difference in high- or low-PKM2 groups. The figure showed top six interactions sorted by interaction *P* values. Details see in Additional file 1: Table S10. Statistical significance: \* *P* < 0.05, \*\* *P* < 0.01, \*\*\* *P* < 0.001

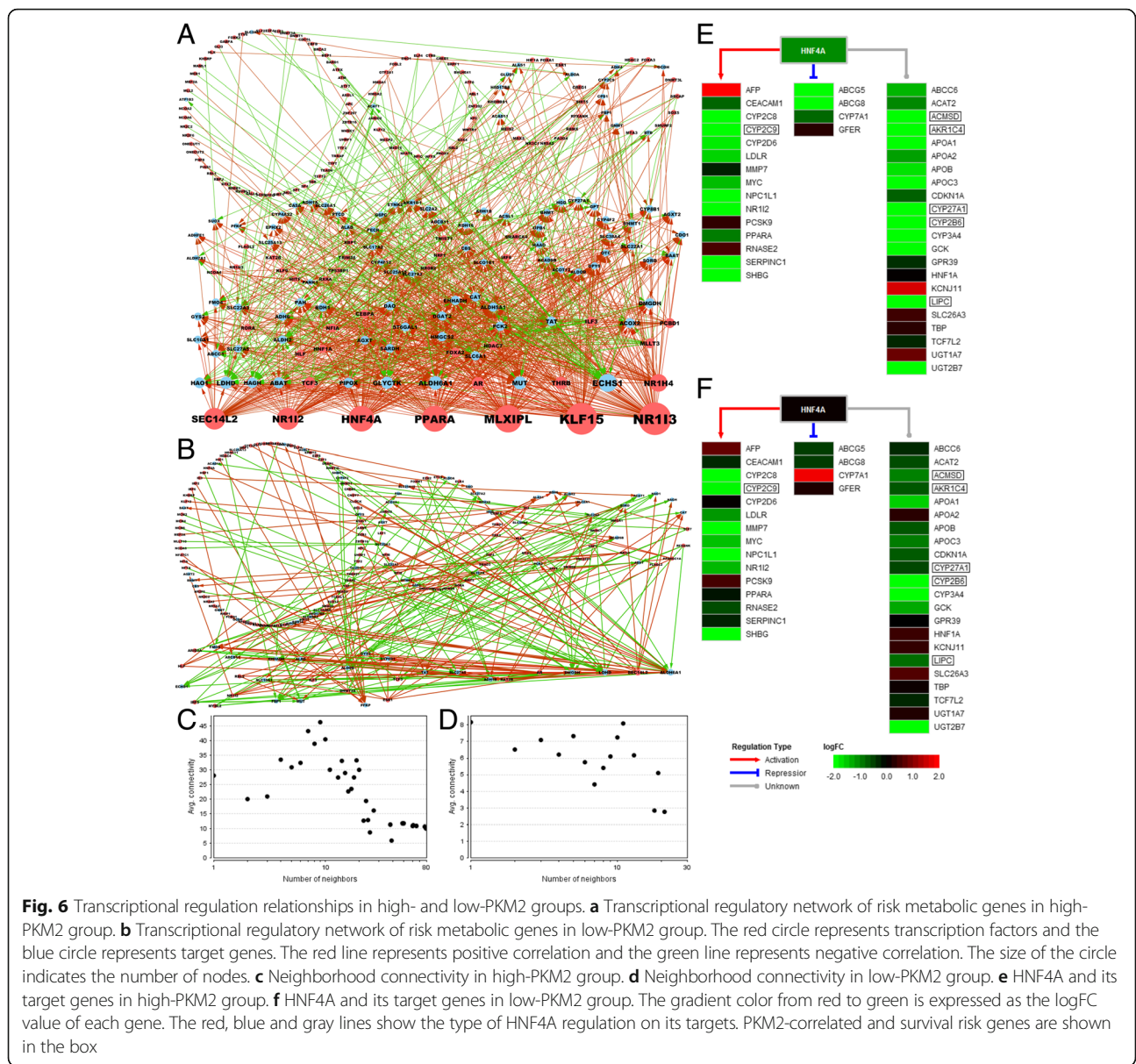
There were only 47 documented regulation relationships contain 23 TFs and 29 risk metabolic genes (Additional file 1: Table S11). In these TF-target interactions, HNF4A regulated the most target genes. We displayed the expression profiles and regulation relationships of HNF4A and its target genes (including risk metabolic genes and other genes) in the high-PKM2 and low-PKM2 groups (Fig. 6e and f). In total, 6 risk metabolic genes were regulated by HNF4A (CYP2C9 is activated by HNF4A, and the regulation types of the other 5 genes are unknown). In high-PKM2 patients, HNF4A was expressed at low levels, and its target genes were all significantly down-regulated. However, in low-PKM2 patients, HNF4A expression was

not altered, and four HNF4A-regulated risk metabolic genes also showed no significant difference, although these genes exhibited low expression.

#### Network of risk metabolic genes and drugs that target these genes

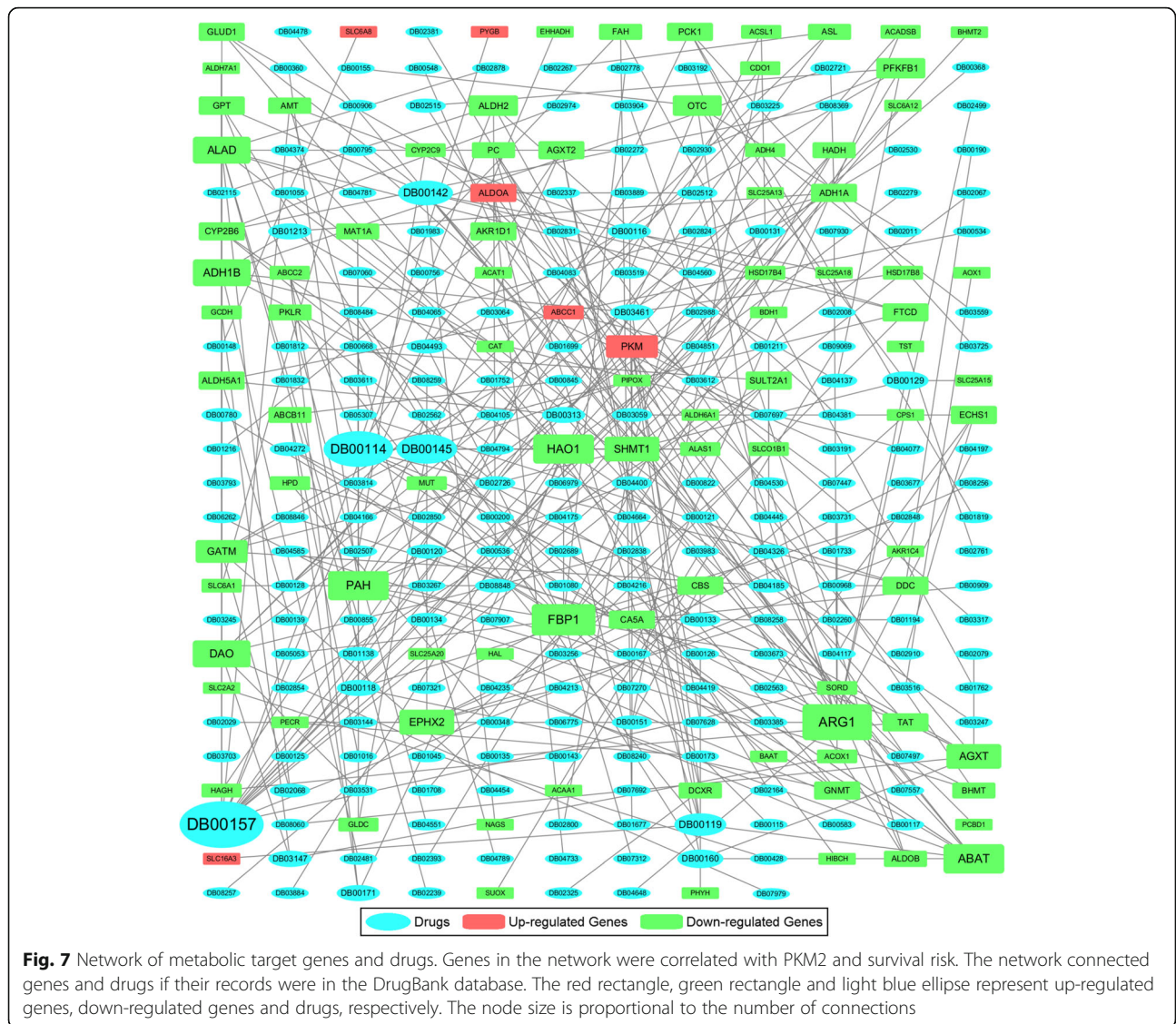
We obtained 290 interactions of the risk metabolic genes, proteins and drugs (Additional file 1: Table S12). The network of drugs and risk metabolic genes showed in Fig. 7. The network included 7 up-regulated metabolic genes (PKM2 was searched in the DrugBank database, and no records of its subtypes exist), 86 down-regulated metabolic genes and 204 drugs. In total, 12 enzymes





interacted with more than 5 drugs. Among these proteins, ARG1 binds 12 drugs, and FBP1 binds 10 drugs. ABAT, HAO1 and PAH each bind 9 drugs; ADH1B, ALAD and DAO each bind 8 drugs; AGXT, EPHX2 and SHMT1 each bind 7 drugs; and GATM and PKM each bind 6 drugs. In addition, 5 drugs interacted with more than 5 enzymes. These drugs were pyridoxal phosphate, pyruvic acid, L-glutamic acid, glycine and NADH. We noticed that most of these drugs are coenzymes or substrates of the risk metabolic enzymes. Considering the numerous down-regulated metabolic subsystems in HCC patients, we hypothesized that supplements of these drugs may enhance the activity of metabolic reactions and improve the disease. We also used L1000CDS2 (Characteristic Direction Signature Search) web tool

(<http://amp.pharm.mssm.edu/L1000CDS2/#/index>) to search the compounds that perturb these risk metabolic genes. The input parameter is the list of 6 up-regulated risk metabolic genes and 92 down-regulated risk metabolic genes. The predicted results showed there were 35 unique compounds that may perturb these genes in different cell lines (Additional file 1: Table S13). However, only two compounds were recorded in DrugBank database and did not appear in our results. Due to large differences between human tissues and cell lines, and many compounds used in the Library of Integrated Cellular Signatures (LINCS) program were not recorded in DrugBank database, we believe that there should be more detailed research to prove these results in the future.



**Discussion**

This study found that patients expressing high levels of PKM2 exhibited abnormal expression of whole metabolic genes, detrimental metabolic subsystems changes, unfavorable prognoses, and transcriptional regulation imbalances compared with low-PKM2 patients. In addition, we identified 98 risk metabolic genes that were significantly correlated with PKM2. Utilizing the DrugBank and UniProt databases, we screened 204 drugs that target these genes.

HCC is metabolically different from normal liver tissue in many ways, including glycolysis, lipid metabolism, the TCA cycle, amino acid metabolism, and several PPAR signaling pathways [25]. In addition, close relationships have been observed among metabolic syndrome, non-alcoholic fatty liver disease, and liver cancer [26]. In the American population, metabolic syndrome occurrences

were significantly higher in HCC (37.1%) and intrahepatic cholangiocarcinoma (ICC) (29.7%) patients than in the normal group (17.1%,  $P < 1E-4$ ) [3]. Furthermore, metabolic syndrome is not only a risk factor for HCC in elderly people, but it also promotes cancer in people younger than 65 years [27]. A prospective study of 578,700 adults suggested that high BMI, blood glucose and composite metabolic syndrome z-scores were positively associated with liver cancer risks [28]. Another study in a Swedish population also drew a similar conclusion that metabolic syndrome components were strongly associated with primary liver cancer [29]. In a normal liver, glucose is phosphorylated to glucose-6-phosphate (G6P) by glucokinase (GCK). Normally, G6P undergoes glycolysis and is converted to pyruvate before going through the citric acid cycle in mitochondria to generate ATP through oxidative phosphorylation [25].

However, liver tumor cells produce ATP by aerobic glycolysis, called the Warburg effect, which is accompanied by increased glycolysis and decreased oxidative phosphorylation. In our study, we observed many genes that were over-expressed in glycolysis (including HKDC1, HK2, PFKP, ENO2, ALDOA, GPD2, G6PC3, BPGM, etc.) in high-PKM2 patients. By contrast, more genes were down-regulated in gluconeogenesis, resulting in negative normalized enrichment scores (NESs) in the GSEA results. Pyruvate kinase is activated by its substrate and inhibited by high levels of ATP. In tumors, low enzymatic activity of PKM2 favors the Warburg effect. In addition, high PKM2 mRNA expression was associated with tumor growth and poor outcomes [25]. In our study, patients with high PKM2 expression showed more severe metabolic abnormalities and poorer overall survival than low-PKM2 patients. Furthermore, many down-regulated metabolic genes were significantly negatively correlated with PKM2 in the high-PKM2 group. These results suggest a pleiotropic effect of PKM2 on HCC.

Our study observed that 98 PKM2-correlated genes had a certain relationship with prognosis. The expression statuses of these genes in high-PKM2 patients were linked to poor survival, and some have been widely reported. Solute carrier family 2 member 1 (SLC2A1), also known as GLUT1, encodes a major glucose transporter in the blood-brain barrier. Studies showed that GLUT1 is over-expressed in HCC and suggested GLUT1 as a potential target [25]. In our study, high GLUT1 expression was independently associated with poor overall survival, and its interaction with PKM2 exacerbated this consequence. SLC16A3, belonging to the proton-linked monocarboxylate transporter (MCT) family, was significantly up-regulated in liver cancer in multiple datasets [30] and in our study. Deregulation of this gene may influence intracellular acidic environments [31]. Our study showed that high levels of SLC16A3 and PKM2 expression interactively led to poor prognosis. Dimethylglycine dehydrogenase (DMGDH) was expressed at low levels, negatively correlated with PKM2 and correlated with low patient survival in this study. Decreased DMGDH levels in liver tumor cells and the effects of DMGDH over-expression on the suppression of migration, invasion and metastasis has already been proven. Thus, DMGDH is suggested to be a potential diagnostic and prognostic marker for HCC [32]. SLC22A1, encoding organic cation transporter-1 (OCT1), was expressed at low levels, associated with worse HCC patient survival and significantly associated with advanced HCC stages [33]. Furthermore, a previous study showed that HCC and cholangiocarcinoma development is accompanied by the appearance of aberrant SLC22A1 variants. Thus, aberrant SLC22A1 variants together with its low expression

may dramatically affect the ability of sorafenib to reach active intracellular concentrations in HCC tumors [34]. In this study, we also observed that decreased SLC22A1 expression was associated with poor prognosis, and its interaction effect with PKM2 further reduced patient survival. In addition, this study identified ATP1B3, SLC25A15 and other key metabolic genes that were deregulated in HCC and associated with patient overall survival. However, these genes have not yet been reported. Given that these genes were correlated with PKM2, we believe that a more complex mechanism of PKM2 and metabolic genes may exist in HCC and needs to be further studied.

The transcriptional regulation relationships of these key metabolic genes showed a relatively large difference between the high- and low-PKM2 groups, especially HNF4A and its target genes. Hepatocyte nuclear factor 4 alpha (HNF4A) is a nuclear transcription factor that binds DNA as a homodimer, and it has distinct transcriptional regulatory mechanisms in human liver and brain tissues [35]. Similar to our findings, HNF4A and several HNF4A target genes were down-regulated in liver cancer patients [35]. Suppression of HNF4A in mouse livers showed profound influences on zoned metabolic functions, cell proliferation and oncogenesis [36]. An HNF4A-microRNA-194/192 signaling axis was suggested to influence glucose metabolism, cell adhesion and migration, tumorigenesis and tumor progression, as well as epigenetic regulation in a recent study [37]. In our study, HNF4A transcriptionally regulated LIPC, ACMSD, AKR1C4, CYP27A1 and other metabolic genes and showed differential expression in the high- and low-PKM2 groups. In addition, FOS, MYCN, POU5F1 and other TFs also showed differential expression and regulation in high- and low-PKM2 patients. Combined with previous reports, we speculate that the carcinogenic effects of these TFs may be influenced by PKM2 expression in HCC.

High PKM2 expression in liver tumor cells is accompanied by a decrease in total cellular pyruvate kinase activity. Notably, elevated PKM2 enzyme activity may compromise both its proanabolic and antioxidant functions and shows an anti-cancer effect in HCC [38]. Therefore, the use of small-molecule PKM2 activators may be an appropriate approach to disrupt cancer cell metabolism for therapeutic purposes [38], and PKM2's substrate may be a good target choice [39]. Many of the drugs screened in this study are essential human metabolites. Although some of these supplements may promote cancer cell growth, many studies also reported that metabolites supplement have a tumor suppressor effect. A previous study reported that S-adenosylmethionine (S-AdoMet) can selectively induce Bcl-xS that promotes apoptosis in liver cancer cells [40]. Aminoxyacetic acid



(AOAA) is a cystathionine- $\beta$ -synthase (CBS) inhibitor, studies showed it suppresses the proliferation of colon cancer cells in vitro and reduces tumor growth in vivo [41, 42]. Another study suggested that hexachlorophene cause the growth arrest of B lymphoma cells by reducing the expression of cyclin-D1 and c-Myc [43]. Furthermore, studies reported that nontoxic compound disulfiram (DSF) targeted tumor cellular copper inhibited of the proteasomal activity, resulting in tumor cells apoptosis induction [44]. The compounds screened in this study contain the above anti-cancer activity drugs, therefore, we believe that these screened compounds may help to liver cancer treatment.

## Conclusions

In summary, this study showed several unfavorable effects of high PKM2 expression on whole gene expression, metabolic functions, prognosis and transcriptional regulation relationships in HCC patients. Therefore, we recommend PKM2 and PKM2-correlated risk genes can be used as biomarkers or therapeutic targets of HCC. In addition, we screened several drugs that target with these risk genes. This study pointed complex regulatory mechanisms of PKM2 and other risk metabolic genes on HCC, and the potential carcinogenic mechanisms require further study.

## Additional file

**Additional file 1: Table S1.** Differentially expressed genes in high-PKM2 group. **Table S2.** Differentially expressed genes in low-PKM2 group. **Table S3.** Descriptive statistics of PKM2 and other clinical features grouped by hierarchical clustering. **Table S4.** Multivariate logistic regression between PKM2 and hierarchical clustering groups with adjusted covariates. **Table S5.** Details of gene set enrichment analysis in high-PKM2 vs. controls, low-PKM2 vs. controls and high-PKM2 vs. low-PKM2. **Table S6.** Correlation between PKM2 and metabolic genes in high-PKM2 group. **Table S7.** Correlation between PKM2 and metabolic genes in low-PKM2 group. **Table S8.** Survival analysis of up-regulated and PKM2-positively correlated metabolic genes. **Table S9.** Survival analysis of down-regulated and PKM2-negatively correlated metabolic genes. **Table S10.** Interaction of PKM2 and PKM2-uncorrelated metabolic genes on patients' overall survival. **Table S11.** Transcriptional regulation relationships of key metabolic genes. **Table S12.** Information of key metabolic genes and drugs. **Table S13.** Predicted compounds that affect risk metabolic genes by L1000CDS2 web tools. (XLSX 794 kb)

## Abbreviations

FDR: False discovery rate; GSEA: Gene set enrichment analysis; HCC: Hepatocellular carcinoma; HR: Hazard ratio; NES: Normalized enrichment score; PK: Pyruvate kinase; RSEM: RNA-seq by expectation-maximization; TCGA: The Cancer Genome Atlas; TF: Transcription factor; TRN: Transcriptional regulatory network

## Acknowledgements

Not applicable.

## Funding

This work was supported by the National Natural Science Foundation of China (grants no. 81570376 and no. 81573231), the Natural Science Foundation of Shanghai (grant no. 15ZR1424400), the Three-year Action Plan on Public Health, Phase IV, Shanghai, China (grant no. 15GWZK0801), SJTU

Interdisciplinary Research Key (grant no. YG2015ZD01) and Shanghai Municipal Planning Commission of Science and Research Fund (grant no. 20144Y0249). The funding bodies allowed to collect, analyze, interpret the data and write the manuscript.

## Availability of data and materials

The transcriptome data and clinical data are available in the NIH-GDC repository (<https://portal.gdc.cancer.gov/>). All human metabolic genes and metabolic subsystems are available in the Recon2 human metabolic model [18]. Copy number data are available in cBioPortal database (<http://www.cbioportal.org/>). Methylation data are available in MethHC (<http://methhc.mbc.nctu.edu.tw/php/search.php?opt=gene>). Human transcriptional regulatory relationship data are available in TRRUST (<http://www.grnpedia.org/trrust/>). Drug and protein information are available in DrugBank (<https://www.drugbank.ca/>) and UniProt (<http://www.uniprot.org/>).

## Authors' contributions

WXL and WWL designed the study. WXL, WWL, DL and XCL performed data analysis. WXL, WWL, TNF, LL and BYQ wrote the manuscript. WXL, WWL and BYQ revised the manuscript. All authors read and approved the final manuscript.

## Ethics approval and consent to participate

Not applicable.

## Consent for publication

Not applicable.

## Competing interests

The authors declare that they have no competing interests.

## Publisher's Note

Springer Nature remains neutral with regard to jurisdictional claims in published maps and institutional affiliations.

## Author details

<sup>1</sup>Hongqiao International Institute of Medicine, Shanghai Tongren Hospital/Faculty of Public Health, Shanghai Jiao Tong University School of Medicine, Shanghai 200025, China. <sup>2</sup>Clinical Research Center, Shanghai Jiao Tong University School of Medicine, Shanghai 200025, China. <sup>3</sup>School of Stomatology and Medicine, Foshan University, Foshan 528000, Guangdong, China. <sup>4</sup>Department of Gastrointestinal Surgery, The First Affiliated Hospital of Anhui Medical University, Hefei 230032, Anhui, China. <sup>5</sup>Key Laboratory of Animal Models and Human Disease Mechanisms, Kunming Institute of Zoology, Chinese Academy of Sciences, Kunming 650223, Yunnan, China. <sup>6</sup>Kunming College of Life Science, University of Chinese Academy of Sciences, Kunming 650204, Yunnan, China.

Received: 5 June 2018 Accepted: 31 October 2018

Published online: 21 November 2018

## References

- Kumar M, Zhao X, Wang XW. Molecular carcinogenesis of hepatocellular carcinoma and intrahepatic cholangiocarcinoma: one step closer to personalized medicine? *Cell Biosci.* 2011;1(1):5.
- Pocha C, Kolly P, Dufour JF. Nonalcoholic fatty liver disease-related hepatocellular carcinoma: a problem of growing magnitude. *Semin Liver Dis.* 2015;35(3):304–17.
- Welzel TM, Graubard BI, Zeuzem S, El-Serag HB, Davila JA, McGlynn KA. Metabolic syndrome increases the risk of primary liver cancer in the United States: a study in the SEER-Medicare database. *Hepatology.* 2011; 54(2):463–71.
- Wang C, Wang X, Gong G, Ben Q, Qiu W, Chen Y, Li G, Wang L. Increased risk of hepatocellular carcinoma in patients with diabetes mellitus: a systematic review and meta-analysis of cohort studies. *Int J Cancer.* 2012; 130(7):1639–48.
- Hassan MM, Curley SA, Li D, Kaseb A, Davila M, Abdalla EK, Javle M, Moghazy DM, Lozano RD, Abbruzzese JL, et al. Association of diabetes duration and diabetes treatment with the risk of hepatocellular carcinoma. *Cancer.* 2010;116(8):1938–46.



6. Huang Q, Tan Y, Yin P, Ye G, Gao P, Lu X, Wang H, Xu G. Metabolic characterization of hepatocellular carcinoma using nontargeted tissue metabolomics. *Cancer Res.* 2013;73(16):4992–5002.
7. Dayton TL, Jacks T, Vander Heiden MG. PKM2, cancer metabolism, and the road ahead. *EMBO Rep.* 2016;17(12):1721–30.
8. Israelsen WJ, Dayton TL, Davidson SM, Fiske BP, Hosios AM, Bellinger G, Li J, Yu Y, Sasaki M, Horner JW, et al. PKM2 isoform-specific deletion reveals a differential requirement for pyruvate kinase in tumor cells. *Cell.* 2013;155(2):397–409.
9. Yang W, Xia Y, Hawke D, Li X, Liang J, Xing D, Aldape K, Hunter T, Alfred Yung WK, Lu Z. PKM2 phosphorylates histone H3 and promotes gene transcription and tumorigenesis. *Cell.* 2012;150(4):685–96.
10. Wu J, Hu L, Chen M, Cao W, Chen H, He T. Pyruvate kinase M2 overexpression and poor prognosis in solid tumors of digestive system: evidence from 16 cohort studies. *OncoTargets and therapy.* 2016;9:4277–88.
11. Chen Z, Lu X, Wang Z, Jin G, Wang Q, Chen D, Chen T, Li J, Fan J, Cong W, et al. Co-expression of PKM2 and TRIM35 predicts survival and recurrence in hepatocellular carcinoma. *Oncotarget.* 2015;6(4):2538–48.
12. Lu DH, Lv WW, Li WX, Gao YD. High PKM2 expression is independently correlated with decreased overall survival in hepatocellular carcinoma. *Oncol Lett.* 2018;16(3):3603–10.
13. Hu W, Lu SX, Li M, Zhang C, Liu LL, Fu J, Jin JT, Luo RZ, Zhang CZ, Yun JP. Pyruvate kinase M2 prevents apoptosis via modulating Bim stability and associates with poor outcome in hepatocellular carcinoma. *Oncotarget.* 2015;6(9):6570–83.
14. Bensinger SJ, Christofk HR. New aspects of the Warburg effect in cancer cell biology. *Semin Cell Dev Biol.* 2012;23(4):352–61.
15. Liu AM, Xu Z, Shek FH, Wong KF, Lee NP, Poon RT, Chen J, Luk JM. miR-122 targets pyruvate kinase M2 and affects metabolism of hepatocellular carcinoma. *PLoS One.* 2014;9(1):e86872.
16. Xu Q, Zhang M, Tu J, Pang L, Cai W, Liu X. MicroRNA-122 affects cell aggressiveness and apoptosis by targeting PKM2 in human hepatocellular carcinoma. *Oncol Rep.* 2015;34(4):2054–64.
17. Thiele I, Swainston N, Fleming RM, Hoppe A, Sahoo S, Aurich MK, Haraldsdottir H, Mo ML, Rolfsson O, Stobbe MD, et al. A community-driven global reconstruction of human metabolism. *Nat Biotechnol.* 2013;31(5):419–25.
18. Swainston N, Smallbone K, Hefzi H, Dobson PD, Brewer J, Hanscho M, Zielinski DC, Ang KS, Gardiner NJ, Gutierrez JM, et al. Recon 2.2: from reconstruction to model of human metabolism. *Metabolomics.* 2016;12:109.
19. Gao J, Aksoy BA, Dogrusoz U, Dresdner G, Gross B, Sumer SO, Sun Y, Jacobsen A, Sinha R, Larsson E, et al. Integrative analysis of complex cancer genomics and clinical profiles using the cBioPortal. *Sci Signal.* 2013;6(269):pl1.
20. Ritchie ME, Phipson B, Wu D, Hu Y, Law CW, Shi W, Smyth GK. limma powers differential expression analyses for RNA-seq and microarray studies. *Nucleic Acids Res.* 2015;43(7):e47.
21. Subramanian A, Tamayo P, Mootha VK, Mukherjee S, Ebert BL, Gillette MA, Paulovich A, Pomeroy SL, Golub TR, Lander ES, et al. Gene set enrichment analysis: a knowledge-based approach for interpreting genome-wide expression profiles. *Proc Natl Acad Sci U S A.* 2005;102(43):15545–50.
22. Gandrud C. simPH: an R package for illustrating estimates from cox proportional Hazard models including for interactive and nonlinear effects. *J Stat Softw.* 2015;65(3):1–20.
23. Han H, Shim H, Shin D, Shim JE, Ko Y, Shin J, Kim H, Cho A, Kim E, Lee T, et al. TRRUST: a reference database of human transcriptional regulatory interactions. *Sci Rep.* 2015;5:11432.
24. Wishart DS, Knox C, Guo AC, Shrivastava S, Hassanali M, Stothard P, Chang Z, Wooley J. DrugBank: a comprehensive resource for in silico drug discovery and exploration. *Nucleic Acids Res.* 2006;34(Database issue):D668–72.
25. Zarrinpar A. Metabolic pathway inhibition in liver Cancer. *SLAS Technol.* 2017;22(3):237–44.
26. Kanda T, Imazeki F, Wu S, Nakamoto S, Yokosuka O. The assessment of serum hepatitis C virus RNA 12 weeks after the end of treatment using TaqMan polymerase chain reaction is less relevant than after 24 weeks for predicting sustained virological response. *Hepatology.* 2011;54(4):1482 author reply 1482–1483.
27. Montella M, Polesel J, Talamini R, Crispo A, Giudice A, Izzo F, La Vecchia C. Metabolic syndrome is also a risk factor for primary liver cancer in patients younger than 65 years of age? *Hepatology.* 2011;54(6):2277–8.
28. Borena W, Strohmaier S, Lukanova A, Bjorge T, Lindkvist B, Hallmans G, Edlinger M, Stocks T, Nagel G, Manjer J, et al. Metabolic risk factors and primary liver cancer in a prospective study of 578,700 adults. *Int J Cancer.* 2012;131(1):193–200.
29. Nderitu P, Bosco C, Garmo H, Holmberg L, Malmstrom H, Hammar N, Walldius G, Jungner I, Ross P, Van Hemelrijck M. The association between individual metabolic syndrome components, primary liver cancer and cirrhosis: a study in the Swedish AMORIS cohort. *Int J Cancer.* 2017;141(6):1148–60.
30. Li L, Guo L, Wang Q, Liu X, Zeng Y, Wen Q, Zhang S, Kwok HF, Lin Y, Liu J. DAPK1 as an independent prognostic marker in liver cancer. *PeerJ.* 2017;5:e3568.
31. Wilkins LR, Brautigan DL, Wu H, Yarmohammadi H, Kubicka E, Serbulea V, Leitinger N, Liu W, Haaga JR. Cinnamic acid derivatives enhance the efficacy of Transarterial embolization in a rat model of hepatocellular carcinoma. *Cardiovasc Intervent Radiol.* 2017;40(3):430–7.
32. Liu G, Hou G, Li L, Li Y, Zhou W, Liu L. Potential diagnostic and prognostic marker dimethylglycine dehydrogenase (DMGDH) suppresses hepatocellular carcinoma metastasis in vitro and in vivo. *Oncotarget.* 2016;7(22):32607–16.
33. Heise M, Lautem A, Knapstein J, Schattenberg JM, Hoppe-Lotichius M, Foltys D, Weiler N, Zimmermann A, Schad A, Grundemann D, et al. Downregulation of organic cation transporters OCT1 (SLC22A1) and OCT3 (SLC22A3) in human hepatocellular carcinoma and their prognostic significance. *BMC Cancer.* 2012;12:109.
34. Herraiz E, Lozano E, Macias RI, Vaquero J, Bujanda L, Banales JM, Marin JJ, Briz O. Expression of SLC22A1 variants may affect the response of hepatocellular carcinoma and cholangiocarcinoma to sorafenib. *Hepatology.* 2013;58(3):1065–73.
35. Zhang B, Madden P, Gu J, Xing X, Sankar S, Flynn J, Kroll K, Wang T. Uncovering the transcriptomic and epigenomic landscape of nicotinic receptor genes in non-neuronal tissues. *BMC Genomics.* 2017;18(1):439.
36. Desert R, Rohart F, Canal F, Sicard M, Desille M, Renaud S, Turlin B, Bellaud P, Perret C, Clement B, et al. Human hepatocellular carcinomas with a Periportal phenotype have the lowest potential for early recurrence after curative resection. *Hepatology.* 2017;66(5):1502–18.
37. Morimoto A, Kannari M, Tsuchida Y, Sasaki S, Saito C, Matsuta T, Maeda T, Akiyama M, Nakamura T, Sakaguchi M, et al. An HNF4alpha-microRNA-194/192 signaling axis maintains hepatic cell function. *J Biol Chem.* 2017;292(25):10574–85.
38. Anastasiou D, Pouligiannis G, Asara JM, Boxer MB, Jiang JK, Shen M, Bellinger G, Sasaki AT, Locasale JW, Auld DS, et al. Inhibition of pyruvate kinase M2 by reactive oxygen species contributes to cellular antioxidant responses. *Science.* 2011;334(6060):1278–83.
39. Vander Heiden MG, Locasale JW, Swanson KD, Sharfi H, Heffron GJ, Amador-Noguez D, Christofk HR, Wagner G, Rabinowitz JD, Asara JM, et al. Evidence for an alternative glycolytic pathway in rapidly proliferating cells. *Science.* 2010;329(5998):1492–9.
40. Lu SC, Mato JM. S-Adenosylmethionine in cell growth, apoptosis and liver cancer. *J Gastroenterol Hepatol.* 2008;23(Suppl 1):S73–7.
41. Szabo C, Coletta C, Chao C, Modis K, Szczesny B, Papapetropoulos A, Hellmich MR. Tumor-derived hydrogen sulfide, produced by cystathionine-beta-synthase, stimulates bioenergetics, cell proliferation, and angiogenesis in colon cancer. *Proc Natl Acad Sci U S A.* 2013;110(30):12474–9.
42. Chao C, Zatarain JR. Cystathionine-beta-synthase inhibition for Colon Cancer: enhancement of the efficacy of Aminoxyacetic acid via the prodrug approach. *Mol Med.* 2016;22(1):1.
43. Min HJ, Cho IR, Srisuttee R, Park EH, Cho DH, Ahn JH, Lee IS, Johnston RN, Oh S, Chung YH. Hexachlorophene suppresses beta-catenin expression by up-regulation of Siah-1 in EBV-infected B lymphoma cells. *Cancer Lett.* 2009;276(2):136–42.
44. Chen D, Cui QC, Yang H, Dou QP. Disulfiram, a clinically used anti-alcoholism drug and copper-binding agent, induces apoptotic cell death in breast cancer cultures and xenografts via inhibition of the proteasome activity. *Cancer Res.* 2006;66(21):10425–33.