

ERRATUM

Open Access



# Erratum to: Differences in TGF- $\beta$ 1 signaling and clinicopathologic characteristics of histologic subtypes of gastric cancer

Kyung Ho Pak<sup>1,3</sup>, Dong Hoon Kim<sup>2</sup>, Hyunki Kim<sup>4</sup>, Do Hyung Lee<sup>5</sup> and Jae-Ho Cheong<sup>5,6,7,8\*</sup>

## Erratum

Unfortunately, the original version of this article [1] contained an error in Fig. 2. Within this figure, the annotations for “High TGF $\beta$ 1” and “Low TGF $\beta$ 1” were the wrong way around. This has been corrected in the original article and is also included correctly below.

## Author details

<sup>1</sup>Department of Surgery, Hallym University Medical Center, Hwasung, Korea. <sup>2</sup>Department of Pathology, Hallym University Medical Center, Hwasung, Korea. <sup>3</sup>Department of Medicine, Yonsei University Graduate School, Seoul, Korea. <sup>4</sup>Department of Pathology, Yonsei University College of Medicine, Seoul, Korea. <sup>5</sup>Department of Surgery, Yonsei University College of Medicine, 50-1 Yonsei-ro, Seoul, Seodaemun-gu 120-752, Korea. <sup>6</sup>Department of Biochemistry & Molecular Biology, Yonsei University College of Medicine, Seoul, Korea. <sup>7</sup>Brain Korea 21 PLUS Project for Medical Science, Yonsei University College of Medicine, Seoul, Korea. <sup>8</sup>Open NBI Convergence Technology Research Laboratory, Yonsei University College of Medicine, Seoul, Korea.

Received: 8 February 2016 Accepted: 8 February 2016

Published online: 15 February 2016

## Reference

1. Pak KH, Kim DH, Kim H, Lee DH, Cheong JH. Differences in TGF- $\beta$ 1 signaling and clinicopathologic characteristics of histologic subtypes of gastric cancer. *BMC Cancer*. 2016;16:60. doi:10.1186/s12885-016-2091-x.

\* Correspondence: jhcheong@yuhs.ac

<sup>5</sup>Department of Surgery, Yonsei University College of Medicine, 50-1 Yonsei-ro, Seoul, Seodaemun-gu 120-752, Korea

<sup>6</sup>Department of Biochemistry & Molecular Biology, Yonsei University College of Medicine, Seoul, Korea

Submit your next manuscript to BioMed Central and we will help you at every step:

- We accept pre-submission inquiries
- Our selector tool helps you to find the most relevant journal
- We provide round the clock customer support
- Convenient online submission
- Thorough peer review
- Inclusion in PubMed and all major indexing services
- Maximum visibility for your research

Submit your manuscript at  
[www.biomedcentral.com/submit](http://www.biomedcentral.com/submit)



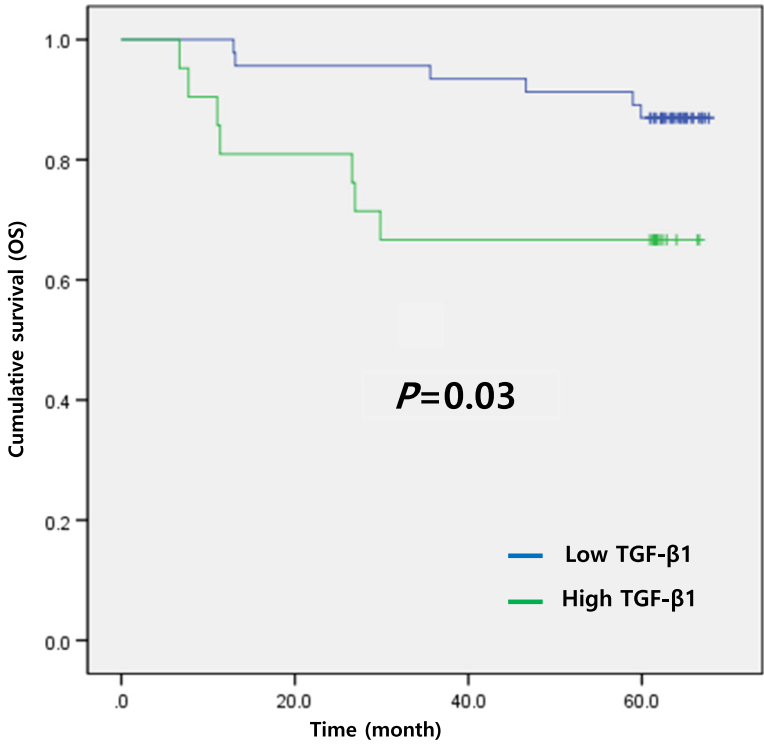


Fig. 2