

Research article

Open Access

Metabolic and morphological alterations induced by proteolysis-inducing factor from Walker tumour-bearing rats in C₂C₁₂ myotubes

Claudia L Yano¹, Gislaine Ventrucci¹, William N Field², Michael J Tisdale² and Maria Cristina C Gomes-Marcondes*¹

Address: ¹Departamento de Fisiologia e Biofísica, Instituto de Biologia, Universidade Estadual de Campinas (UNICAMP), CP 6109, 13083-970, Campinas, São Paulo, Brazil and ²Cancer Research Laboratory, Pharmaceutical Sciences Research Institute, Aston University, Birmingham, B4 7ET, UK

Email: Claudia L Yano - clyano@hotmail.com; Gislaine Ventrucci - ventrucci@hotmail.com; William N Field - w.n.field@aston.ac.uk; Michael J Tisdale - m.j.tisdale@aston.ac.uk; Maria Cristina C Gomes-Marcondes* - cintgoma@unicamp.br

* Corresponding author

Published: 28 January 2008

Received: 19 April 2007

BMC Cancer 2008, 8:24 doi:10.1186/1471-2407-8-24

Accepted: 28 January 2008

This article is available from: <http://www.biomedcentral.com/1471-2407/8/24>

© 2008 Yano et al; licensee BioMed Central Ltd.

This is an Open Access article distributed under the terms of the Creative Commons Attribution License (<http://creativecommons.org/licenses/by/2.0>), which permits unrestricted use, distribution, and reproduction in any medium, provided the original work is properly cited.

Abstract

Background: Patients with advanced cancer suffer from cachexia, which is characterised by a marked weight loss, and is invariably associated with the presence of tumoral and humoral factors which are mainly responsible for the depletion of fat stores and muscular tissue.

Methods: In this work, we used cytotoxicity and enzymatic assays and morphological analysis to examine the effects of a proteolysis-inducing factor (PIF)-like molecule purified from ascitic fluid of Walker tumour-bearing rats (WF), which has been suggested to be responsible for muscle atrophy, on cultured C₂C₁₂ muscle cells.

Results: WF decreased the viability of C₂C₁₂ myotubes, especially at concentrations of 20–25 µg.mL⁻¹. There was an increase in the content of the pro-oxidant malondialdehyde, and a decrease in antioxidant enzyme activity. Myotubes protein synthesis decreased and protein degradation increased together with an enhanced in the chymotrypsin-like enzyme activity, a measure of functional proteasome activity, after treatment with WF. Morphological alterations such as cell retraction and the presence of numerous cells in suspension were observed, particularly at high WF concentrations.

Conclusion: These results indicate that WF has similar effects to those of proteolysis-inducing factor, but is less potent than the latter. Further studies are required to determine the precise role of WF in this experimental model.

Background

The most common manifestation of advanced malignant disease is the development of cancer cachexia, which is a strong independent cause of mortality in this disease [1]. The abnormalities associated with cancer cachexia include

anorexia, loss of body weight and muscle mass, as well as alterations in carbohydrate, lipid, and protein metabolism [2,3].

Atrophy of skeletal muscle results from increased protein catabolism (hypercatabolism) and decreased protein synthesis (hypoanabolism), both of which may occur simultaneously and result in intense muscular atrophy [4,5]. Cytokines, particularly TNF- α , IL-6, and interferon- γ , have been suggested to be responsible for the metabolic changes associated with tissue loss in cancer wasting [6-8]. In addition to humoral factors, tumour-derived molecules have also been proposed as mediators of cancer cachexia. Todorov et al. [9] purified and characterised a 24 kDa sulphated glycoprotein from the cachexia-inducing MAC16 tumour and similar material was also isolated from the urine of cachectic patients [9]. When this material was purified and injected into mice it produced a profound decrease in body weight, which was entirely due to loss of lean body mass [10]. Atrophy of skeletal muscle was due to a depression in protein synthesis (by 50%) and an increase in protein degradation (by 50%) [5]. The material was named proteolysis-inducing factor (PIF), because of its ability to directly induce protein loss in murine myotubes and isolated muscle preparations, and because this was the name given to an unidentified factor in human serum, which was capable of inducing proteolysis in isolated muscle preparations [11]. PIF induces protein degradation in skeletal muscle by induction of the ubiquitin-proteasome proteolytic pathway, which is considered to be the major mechanism by which myotubular proteins are degraded in skeletal muscle [12]. Recent results [13] show that PIF inhibits protein synthesis and induces protein degradation in skeletal muscle through a single step: the activation of the ds RNA-dependent protein kinase (PKR) [13]. Activation of PKR leads to phosphorylation of eukaryotic initiation factor 2 (eIF2) on the α -subunit, which inhibits translation initiation by competing with the guanine nucleotide exchange factor (eIF-2B) for the exchange of GDP for GTP on eIF2. Activation of PKR also leads to activation of the transcription factor NF- κ B, which is responsible for the increased expression of major components of the ubiquitin-proteasome pathway. PIF may act alone or together with host or tumour derived cytokines to produce a cachectic state [14]. Both biochemical [15] and histological analysis [16] support the notion that tumours are the source of PIF.

Tumour growth induces marked changes in the oxidative metabolism of distant tumour-free tissues and organs of the host [17]. These changes include an increase in the level of pro-oxidant compounds and a reduction in the activities of antioxidant enzymes in extra-tumoral tissues [18]. A better understanding of the role of cytokines and tumour factors [19], in the molecular mechanisms of protein wasting in skeletal muscle is essential for the design of therapeutic strategies in the near future. The Walker-256 tumour has been extensively used as an experimental model to induce cachexia in rats [20], but there have been

no studies on whether the tumour and/or host cells produce a factor similar to PIF. In this study, we investigated the metabolic effects of 'Walker factor' (WF) purified from ascitic fluid from rats bearing the Walker 256 tumour, and its relationship to PIF.

Methods

Animals and tumour implantation

Adult male Wistar rats were obtained from the Multidisciplinary Centre for Biological Investigation (CEMIB) at UNICAMP. The rats were maintained on a 12 h light/dark cycle at 23°C and fed standard rodent chow. All of the experimental protocols involving animals were reviewed and approved by the Institutional Committee for Ethics in Animal Experimentation (CEEA/IB/UNICAMP, protocol no. 342-1). Walker 256 cells were cultured intraperitoneally and the ascitic fluid was obtained from the peritoneal cavity as described by Gomes-Marcondes et al. [21].

"Walker factor" purification

The ascitic fluid obtained from Walker 256 tumour-bearing rats was centrifuged to remove the tumour cells and the high molecular weight proteins of the supernatant were precipitated with 40% ammonium sulphate and centrifuged (3000 \times g). The supernatant was dialysed with PBS to remove the ammonium sulphate and then concentrated by filtration through an Amicon Ultra centrifugal filter, 10,000 MW cut off (Millipore Corporation, USA) prior to concentration by affinity chromatography [9]. The total protein was measured by a colorimetric method [22]. The 24 kDa protein present in the protein concentrate from Walker tumour ascitic fluid (WF) was resolved by 12% SDS-polyacrylamide gel electrophoresis, stained by Amido Black (1%) and further quantified by western blotting using an antibody to PIF (purified by Cancer Research Laboratory, Aston University, Birmingham, UK). No protease activity was found in the Walker factor after a zymography assay; using electrophoresis in the presence of SDS in 10% polyacrylamide gels and 1 mg/ml gelatin, the Walker factor protein was renatured by exchanging SDS and incubated for 22 hours in Tris-HCl buffer (50 mmol/L), followed by Coomassie Blue staining and densitometric analysis.

Cell culture

C₂C₁₂ myoblasts, obtained from the Cancer Research Laboratory, Aston University, Birmingham, UK, were grown in 75 cm² tissue culture flasks (Corning, NY) at 37°C in a humidified 5% CO₂ atmosphere in medium (DMEM; Sigma, St. Louis, MO) supplemented with 10% foetal calf serum (FCS; Sigma) and 1% penicillin/streptomycin (Sigma). All experiments were initiated using cells grown to 90–100% confluence. To induce differentiation, the growth medium was replaced by medium supplemented with 2% horse serum. 'Walker factor' was incubated with

the cells for 24, 48 and 72 h at final concentrations of 3, 5, 10, 15, 20 and 25 $\mu\text{g}\cdot\text{mL}^{-1}$.

Cytotoxicity assays

The cell viability of control and WF-treated C_2C_{12} myotube cultures was assessed based on MTT reduction, neutral red uptake (NRU) and nucleic acid content (NAC). The MTT assay is a sensitive, quantitative colorimetric assay that measures cell viability based on the capacity of mitochondrial succinyl dehydrogenase in living cells to convert the yellow substrate (3-(4,5-dimethylthiazol-2-yl)-2,5-diphenyltetrazolium bromide, MTT; Sigma) into a dark blue formazan product. After incubation with a 0.01% solution of MTT for 10 min at 37°C, the medium was removed and the formazan solubilised in ethanol. The plate was shaken for 30 min and the absorbance was measured at 570 nm [23]. The NRU assay is a cell viability test based on the incorporation of dye into the lysosomes of viable cells after incubation with the test agents. After removing the medium from the plates, a 0.05% solution of neutral red was added to each well followed by incubation for 3 h at 37°C. The cells were then washed with phosphate-buffered saline containing calcium (PBS- Ca^{2+}), followed by the addition of a solution of 1% glacial acetic acid in 50% ethanol to fix the cells and extract the neutral red incorporated into the lysosomes. The plates were shaken for 20 min and the absorbance was measured at 540 nm [24]. The NAC was determined in the same plates used for the NRU assay. The cell monolayer was solubilised with 0.5 N NaOH at 37°C for 1 h after which the absorbance was measured at 260 nm and expressed as a percentage of the control [25].

Analytical methods

After 24, 48 and 72 h of treatment, the cells were washed in cold PBS to slow biochemical reactions, and then collected in homogenising buffer (HB) (20 mM Tris, 1 mM DTT, 2 mM ATP and 5 mM MgCl_2 , pH 7.2), and centrifuged at 10,000 rpm for 15 min at 4°C. Aliquots of the homogenate supernatant were analysed for glutathione-S-transferase (GST) activity based on the conjugation of 1-chloro-2,4-dinitrobenzene (CDNB; Sigma) with glutathione, and the activity was expressed as $\text{nmol}\cdot\mu\text{g protein}^{-1}\cdot\text{min}^{-1}$, using an extinction coefficient of 9.6, as described by Habig et al [26]. The lipid peroxidation product malondialdehyde (MDA) was determined by incubation with MPO (n-methyl-2-phenylindole; Sigma), followed by measurement of the absorbance at 590 nm, and the results were expressed as $\text{nmol}\cdot\mu\text{g protein}^{-1}$ [27]. The chymotrypsin-like activity was determined by incubating 10 μL of the homogenate supernatant with 100 μL of the fluorogenic substrate succinyl-Leu-Leu-Val-Try-7-amino-4-methylcoumarin (Suc LLVY-AMC) ($0.167 \mu\text{g}\cdot\mu\text{L}^{-1}$ in Tris-HCl, pH 7.4), followed by measurement of the fluo-

rescence (excitation: 360 nm, emission: 460 nm), with the results being expressed as fluorescence $\cdot\mu\text{g protein}^{-1}$.

Measurement of total protein synthesis and degradation

Differentiated myotubes used for protein synthesis were grown to confluence then treated with WF (3, 5, 10, 15, 20 and 25 $\mu\text{g}\cdot\text{mL}^{-1}$) for 24, 48 and 72 h. After each treatment period, the cells were analysed for protein synthesis using procedures adapted from White et al [28] with the following modifications: the myotubes were labelled with L-[2,6 ^3H] phenylalanine ($0.67 \mu\text{Ci}\cdot\text{mmol}^{-1}$ in DMEM added with cold phenylalanine ($2 \text{ mmol}\cdot\text{L}^{-1}$) for 1 h. Subsequently, the cells were washed twice with 10% TCA, and then were removed from the plates and centrifuged. The cellular pellet was prepared by protein precipitation with 10% TCA, which was removed, and 0.5 M NaOH was added, together with 0.1% Triton, and the incubation was carried out for 2 h at 37°C. The protein bound radioactivity was determined in 6 mL scintillation fluid, and expressed as CPM $\cdot\mu\text{g protein}^{-1}$.

The myotubes were analysed for protein degradation using procedures from Gomes-Marcondes et al [12]. Differentiated myotubes grown in six-well plates were labelled with L-[2,6 ^3H] phenylalanine ($0.67 \mu\text{Ci}\cdot\text{mmol}^{-1}$ in DMEM added with cold phenylalanine $2 \text{ mmol}\cdot\text{L}^{-1}$) in 2 mL DMEM containing 2% horse serum. After 24 h, the myotubes were washed three times in PBS, followed by the addition of fresh DMEM without phenol red, and then the cells were subsequently treated with WF (3, 5, 10, 15, 20 and 25 $\mu\text{g}\cdot\text{mL}^{-1}$) for 24, 48 and 72 h. The protein degradation was determined measuring the radioactivity of the cell supernatant released into the medium using a Beckman LS 6000TA liquid scintillation counter, and expressed as CPM per μg of cellular protein.

Light and scanning electron (SEM) microscopy

C_2C_{12} myotubes were grown on coverslips and treated with different concentrations of WF. After 24 h of treatment, the cells were analysed by light microscopy (Leica Instruments). Some cells were fixed in 2.5% paraformaldehyde/glutaraldehyde (Sigma) in 0.1 M PBS, pH 7.4, and then washed in PBS followed by post-fixation with 1% osmium tetroxide (Sigma) and dehydration in a graded ethanol series. The cells were subsequently dried to the critical point (CPDO030 – Balzers, BAL-TEC AG, Wiesbaden, Germany) and gold sputtered (SCD050 – Balzers) before being analysed in a scanning electron microscope (JSM-5800LV, JEOL, Peabody, MA, USA) operated at 1 kV.

Statistical analysis

The results were expressed as the mean \pm SEM. One-way ANOVA followed by Bonferroni's test was used to compare the WF-treated groups with the controls [29]. A value of $P < 0.05$ indicated significance.

Results

The present work shows that it is possible to purify and detect the presence of a factor, named here as the "Walker Factor" (WF), isolated from ascitic fluid of Walker 256 tumour-bearing rats. The WF appears immunologically identical with PIF (Figure 1), and has the same molecular weight (24 kDa). The WF was purified by affinity chromatography using anti-PIF antibody and represented around 1.2% of the total protein, after the concentration. Further the WF was resolved as a single band by SDS-PAGE electrophoresis (Figure 1A) and further detected by Western blotting using a murine antibody to PIF which detects the oligosaccharide chains on the glycoprotein (Figure 1B).

To determine whether the WF could have effects similar to PIF, we used the MTT, NRU and NAC assays to examine the effects of WF on C₂C₁₂ myotubes after treatment with various concentrations of WF (up to 25 µg.mL⁻¹) for 24, 48 and 72 h. Although the WF has a molecular weight similar to PIF [9,30] the doses required to produce detectable physiological effects are higher than those for PIF [12,13]. The present results showed that WF was cytotoxic to cultured C₂C₁₂ myotubes at higher concentrations than

PIF. The cell viability decreased after 24 h incubation with a WF concentration of 25 µg.mL⁻¹; after 48 h and 72 h, WF affected the cell viability mainly at concentrations of 20–25 µg.mL⁻¹ (Figure 2A). The cellular lysosomal response was also significantly affected at high WF concentrations (20 and 25 µg.mL⁻¹), particularly after 48 h and 72 h (Figure 2B). The NAC decreased in cells treated with 10 and 25 µg of WF.mL⁻¹, especially after 72 h (Figure 2C), a finding corroborated by the MTT and NRU assays.

Treatment with low concentrations of WF (5–10 µg.mL⁻¹) for 24 h reduced the GST activity of C₂C₁₂ cells, and this decrease was particularly pronounced after 72 h (Figure 3A) In contrast, there was a significant increase in the MDA levels at WF concentrations of 5 µg.mL⁻¹ and 10 µg.mL⁻¹ (2.0 and 2.8 times higher than in control cells, respectively) (Figure 3B).

All concentrations of WF (1 to 25 µg.mL⁻¹) increased the 'chymotrypsin-like' enzyme activity of C₂C₁₂ myotubes after 24 h, and a further increase was observed especially in 3, 5 and 10 µg.mL⁻¹ after 48 h; the 'chymotrypsin-like' enzyme activity remained enhanced in all concentrations

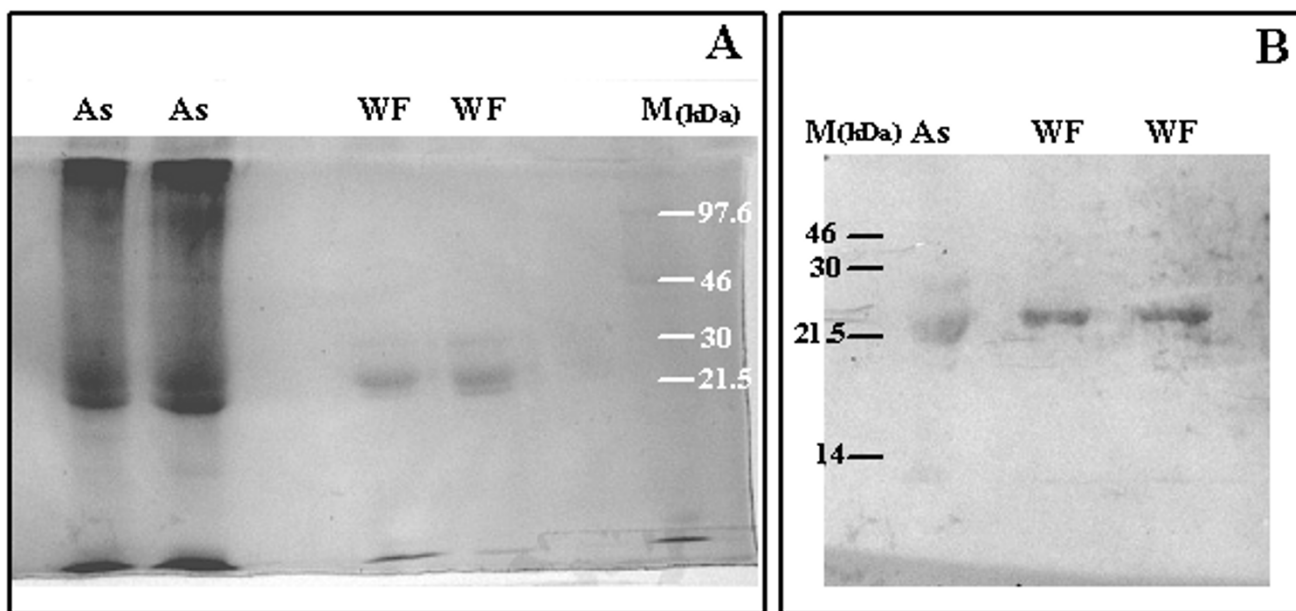
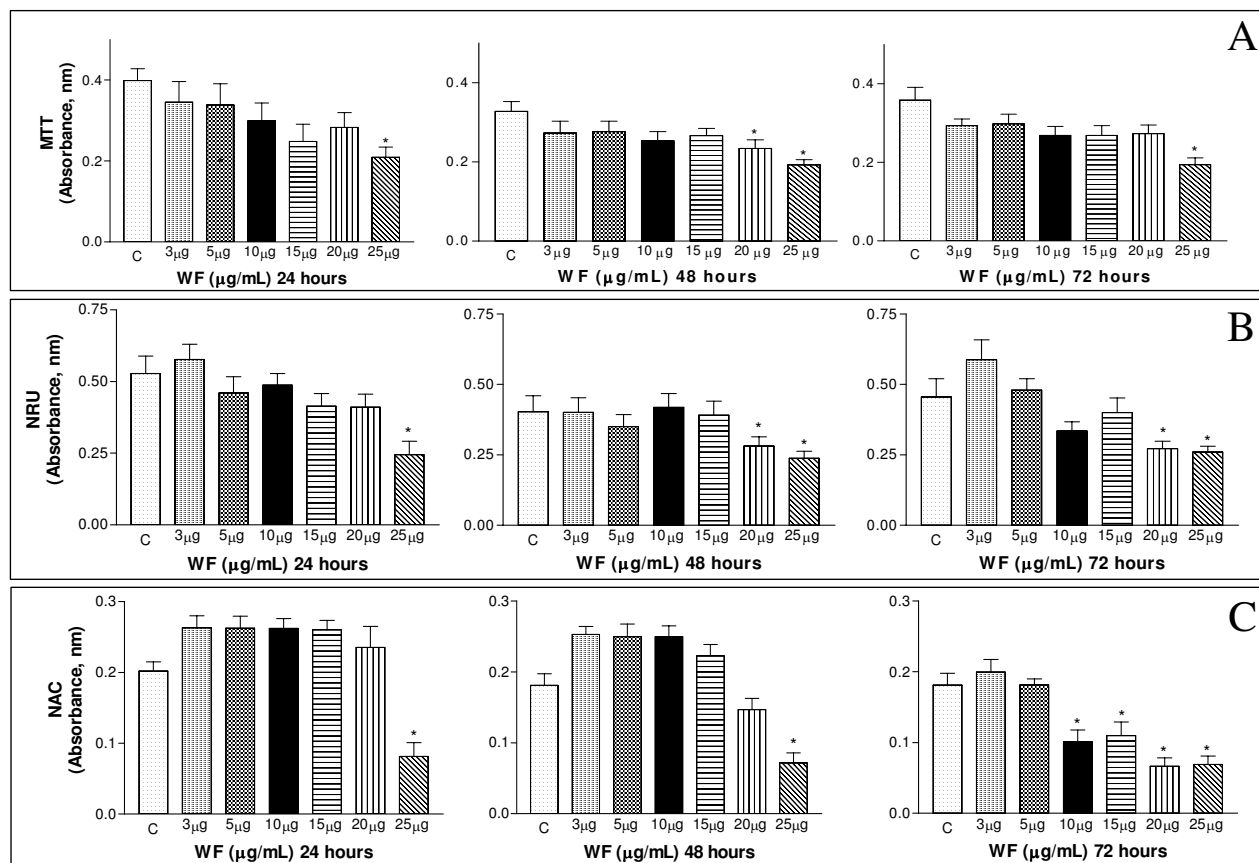


Figure 1

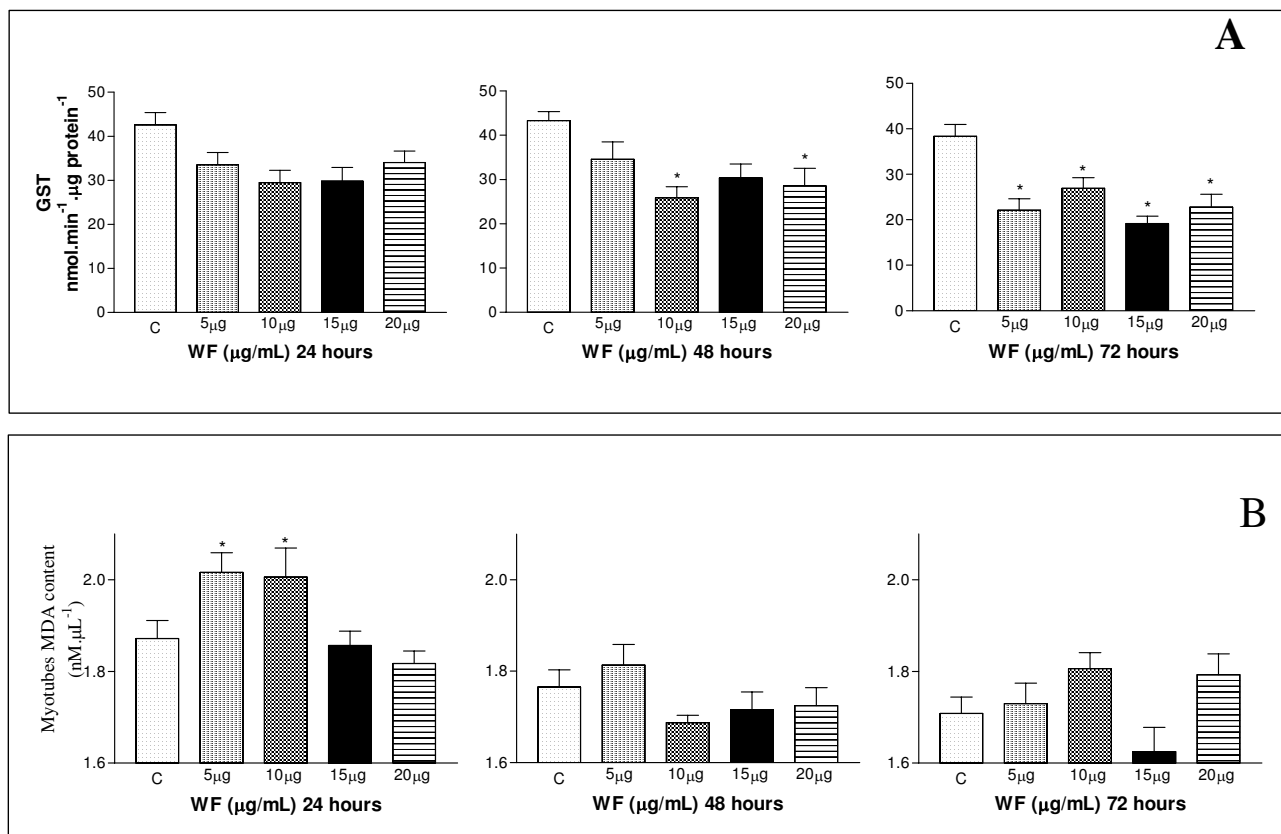
Detection of WF after the purification of ascitic fluid from Walker tumour-bearing rats. A – pure ascitic fluid (As) and purified WF were loaded (10 µg protein) in 12% SDS-polyacrylamide gel followed by 1% Amido Black staining. B – samples of pure ascitic fluid (As) and purified WF were resolved by SDS-PAGE on 12% gels followed by Western blotting; the WF expression were analysed by probing 0.45 mm enhanced chemical luminescence (ECL) nylon membranes with biotinylated anti-PIF antibody (diluted 1:150) followed by detection with the secondary antibody streptavidin horse radish HRP-labelled (dilution 1:1000). Images of the stained and Western blot gels were captured (FTI 500 Image Master VDS, Pharmacia Biotech). Legend: As – pure ascitic fluid, WF – Walker factor obtained by purification and concentration of ascitic fluid, M – marker (220 to 14 kDa).

**Figure 2**

The influence of WF on C_2C_{12} cell viability assessed by the MTT reduction (A, absorbance nm), NRU (B, absorbance nm) and NAC (C, absorbance nm) assays. C_2C_{12} myotubes were treated with WF (3, 5, 10, 15, 20 and 25 $\mu\text{g}\cdot\text{mL}^{-1}$) for 24 h, 48 h and 72 h.

tested after 72 h, indicating enhanced cellular catabolism of proteins (Figure 4A). The chymotrypsin activity was suppressed when the C_2C_{12} myotubes were treated with 10 μM lactacystin (a proteasome inhibitor) together with WF (data not shown). In contrast, WF (only at 10 and 15 $\mu\text{g}\cdot\text{mL}^{-1}$) reduced the protein synthesis in C_2C_{12} myotubes after 24 h (Figure 4B), with a tendency to a decrease in protein synthesis at all concentrations. The protein synthesis inhibition was statistically significant and greater at all WF concentrations and with longer treatments (48 h and 72 h) (Figure 4B). The WF induced an enhancement in protein degradation in C_2C_{12} myotubes, in 3, 10, 15, 20 and 25 $\mu\text{g}\cdot\text{mL}^{-1}$, after 24 h, and this was maintained up to 72 h treatment (Figure 4C).

Light and scanning electron microscopy showed that WF produced morphological changes. Light microscopy showed that C_2C_{12} myotubes grown in complete medium in the absence of WF had a normal, elongated shape (Figure 5A). However, after 24 h incubation with WF (5, 10, 15, 20 and 25 $\mu\text{g}\cdot\text{mL}^{-1}$), morphological changes such as a loss of cell-to-cell contact and subsequent detachment, cell retraction and an altered cell shape were observed (Figure 5B–E). The loss of cell-cell contact was particularly evident at a high concentration (25 $\mu\text{g}\cdot\text{mL}^{-1}$) of WF (Figure 5E). Morphological changes were also seen in SEM after incubation with 1, 3, 5, 10, 15, 20, and 25 μg of $\text{WF}\cdot\text{mL}^{-1}$ for 24 h. Compared to untreated (control) cells (Figure 6A), treatment with WF resulted in numerous membrane vesicles and cell detachment, with cell retrac-

**Figure 3**

The influence of WF on the glutathione-S-transferase activity (A, nmol.min⁻¹.μg protein⁻¹) and malondialdehyde content (B, μg.μL⁻¹) of C₂C₁₂ myotubes treated with WF (3, 5, 10, 15, 20 and 25 μg.mL⁻¹) for 24 h, 48 h and 72 h.

tion leading to changes in cell shape. There was also strong evidence of collagen matrix degradation (Figure 6B-E). All these confirmations together were seen especially at high concentrations of WF (Figure 6F and 6H). The morphological alterations induced by WF resulted in irreversible cell damage and wasting.

Discussion

Cancer-cachexia may be defined as a severe state of malnutrition, characterised by anorexia, weight loss, muscle wasting, and anaemia. Although cachexia often involves a reduced food intake, it differs from starvation in that there is also evidence of metabolic changes in response to cytokines or humoral factors produced by the host [11] or by tumour cells [9] that act directly on skeletal muscle to reduce protein synthesis or increase proteolysis. The present work shows for the first time that a PIF-like molecule has been detected in the ascitic fluid from Walker tumour-bearing rat. This is the first report of a PIF-like molecule from a tumour-bearing rat, although it has previously been identified in tumours from both mice [9]

and humans [15]. The WF has both immunological and molecular weight characteristics identical to PIF, although it appears to be less potent in inducing a biological response. PIF shows activity in the nM range [9,13] whereas the WF requires concentrations up to 1 μM for maximal biological effect. The reason for this difference is not known, but could be due to small differences in the composition of the oligosaccharide chains, which are essential for the biological activity of PIF [31].

Patients with cancer-induced weight loss show reduced protein synthesis in skeletal muscle [32] and increased protein degradation, with the latter resulting from an increased expression of the ubiquitin-proteasome proteolytic pathway, the major determinant of protein degradation. In agreement with this, skeletal muscle from cachectic cancer patients shows increased expression of mRNA for ubiquitin [33] and the proteasome subunits [34] with proteasome-mediated proteolytic activity increasing in parallel with ubiquitin expression [33]. As in cancer cachexia, there was a marked increase in chymot-

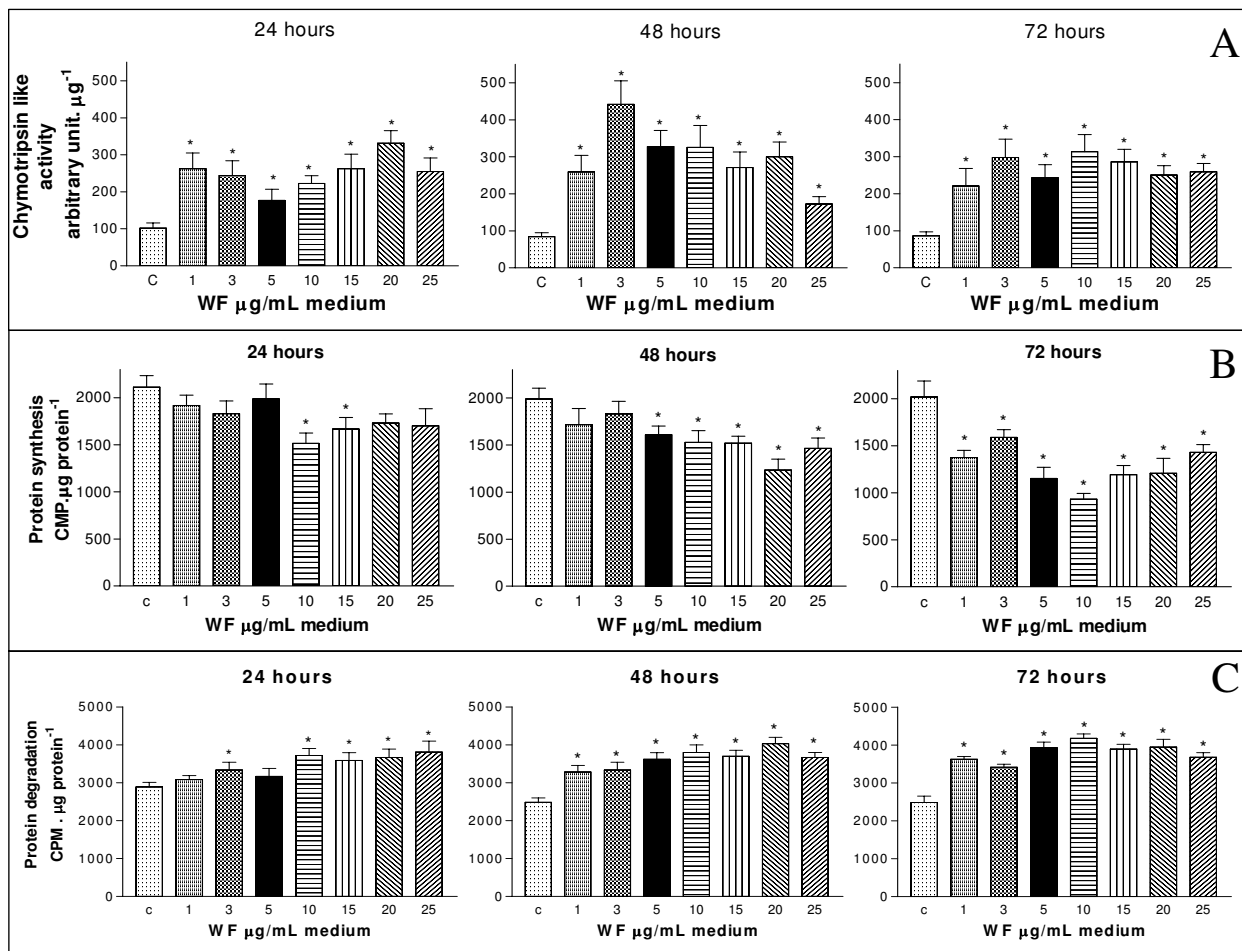


Figure 4

The influence of WF on the chymotrypsin-like activity (A, % arbitrary intensity of the control μg protein⁻¹), protein synthesis (B, CPM.μg cellular protein⁻¹) and protein degradation (C, CPM.μg protein⁻¹) in C₂C₁₂ myotubes incubated with WF (3, 5, 10, 15, 20 and 25 μg.mL⁻¹) for 24 h, 48 h and 72 h.

rypsin-like enzyme activity, the major catalytic activity of the 20S β proteasome catalytic subunit, [35], in myotubes after treatment with WF. Protein degradation was enhanced in C₂C₁₂ myotubes treated with WF, in parallel to an intense depression of protein synthesis, as observed in skeletal muscle of cachectic cancer patients.

The Walker-256 tumour is an experimental model of cancer-cachexia [20] and produces marked changes in the plasma levels of hormones and cytokines [36-39] including WF isolated from the ascitic fluid from tumour-bearing animals, as studied here. Although few studies have examined the humoral factors produced by Walker tumour-bearing rats, the present work observed for the first time that WF has comparable molecular weight and

immunogenicity as PIF and has been shown to produce similar effects [9] but at higher concentrations. Although there have been no direct measurements of WF in tumour tissue, in analogy with other studies [15,16] it could be produced by the Walker-256 tumour cells and/or host tissue cells as in other study showed that the original PIF core-protein was also expressed in non-tumour cells assessed in patients with oesophageal carcinoma [40]. PIF is a complex sulphated glycoprotein with a short core peptide chain to which is attached both N- and O-linked oligosaccharide chains [31]. Over 80% of the molecule is carbohydrate. Although mRNA for the PIF core peptide is upregulated in both tumour and adjacent normal tissue in gastro-oesophageal malignancy, this does not relate to prognosis or cachexia [40]. This is because the biological

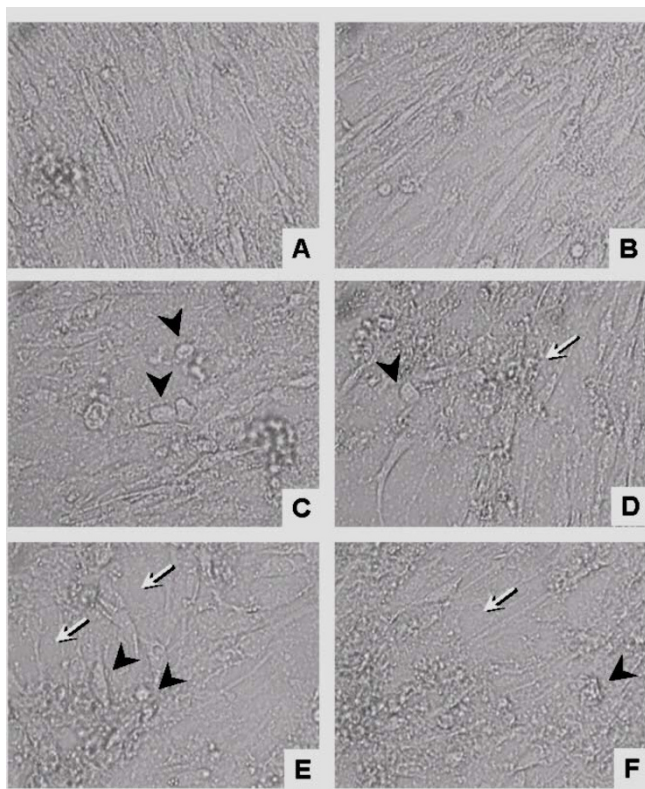


Figure 5
Light microscopy of C_2C_{12} myotubes treated with WF (5, 10, 15, 20, 25 $\mu\text{g}\cdot\text{mL}^{-1}$ for 24 h). A, in the absence of WF, C_2C_{12} myotubes had a normal, elongated shape. B-F, C_2C_{12} myotubes incubated for 24 h with 5 (B), 10 (C), 15 (D), 20 (E) and 25 (F) μg of $\text{WF}\cdot\text{mL}^{-1}$. The morphological analysis of WF-treated C_2C_{12} cells revealed a loss of cell-to-cell contact and consequent detachment (white arrows), cell retraction and a change in cell shape (arrowheads). Lens 40 \times .

activity of PIF is due to the complex oligosaccharide chains [31]. Thus post-translational modification of the PIF core peptide is a key step in determining the biological role, and evidence to date suggests that this can only be carried out by tumour tissue.

The humoral factors play an important role in the intense catabolism of carbohydrates, lipids and protein seen in cancer cachexia [36,41,42]. Vasopressin, prostaglandin E_2 and $\text{TNF-}\alpha$ have been proposed to be involved in the development of cancer cachexia in Walker-256 tumour-bearing rats [35,36]. The infusion or injection of cytokines into animals decreases the protein content of skeletal muscle by increasing the rate of protein degradation and decreasing the rate of protein synthesis [43]. Similar responses were seen here using cultured C_2C_{12} myotubes.

Tumour-bearing animals can present changes in the activities of oxidant and antioxidant enzymes that influence

the antioxidant capacity of skeletal muscle and may lead to oxidative stress [12]. Previous studies have shown decreased catalase activity in the liver and kidneys of tumour-bearing rats [44,45]. In the plasma of cancer patients, there are also marked changes in the activities of antioxidant enzymes [46]. These changes have been attributed to an increase in $\text{TNF-}\alpha$ that reduces hepatic catalase activity [46]. Glutathione peroxidase and transferase are the major enzymes involved in protection against cells peroxidative damage [47]. In addition to a possible control by hormones and cytokines, reactive oxygen species (ROS) may also regulate the activity of antioxidant enzymes [48]. In the present study, WF, especially at high concentrations, was extremely cytotoxic, as shown by the decrease in NAC (which reflects a decrease in DNA content). Additionally, the reduced GST activity seen mainly after 48 h and 72 h of treatment indicated a loss of cellular protective mechanisms and increased in oxidative stress as expressed as malondialdehyde content 24 h after WF treatment, inducing a cumulative damage on myotubes. These results agree with those of Tang et al. [49], who demonstrated that metabolites of the lipoxygenase (12-LOX) pathway were involved in the survival of Walker cells by protecting against the increase in lipid peroxidation and the loss of glutathione-S-transferase activity.

Treatment with WF produced morphological changes in C_2C_{12} myotubes that involved disruption of the collagen matrix and the loss of cellular adherence, events suggestive of physiological changes associated with programmed cell death (apoptosis). Although apoptosis has been widely studied in a variety of tissues in recent years, the importance of this phenomenon in skeletal muscle and heart in individuals with cancer has been relatively ignored. Nevertheless, apoptosis has an important role in specific cardiac pathologies, particularly in response to ischemia-perfusion in which ROS are formed. In skeletal muscle, very few studies have been done under specific physiological (e.g., exercise) and pathophysiological (e.g., dystrophies, denervation, myopathies) conditions. Skeletal muscle is unique in that it is multi-nucleated and can undergo individual myonuclear apoptosis as well as complete cell death [50]. Meanwhile, WF may affect the morphological integrity of the C_2C_{12} myotubes, especially the matrix collagen by the activation of $\text{NF-}\kappa\text{B}$ which induces the stimulation of matrix metalloproteinases [51] in addition to the ubiquitin-proteasome pathway. PIF induces degradation of I-kappaB α and nuclear accumulation of $\text{NF}\kappa\text{B}$ in myotubes enhancing the protein degradation [52]. Therefore this fact could be involved in the degradation of the cell matrix and altering the normal cell activities, thereby leading to cell death. Further experiments are underway to determine how WF may cause this damage in C_2C_{12} myotubes.

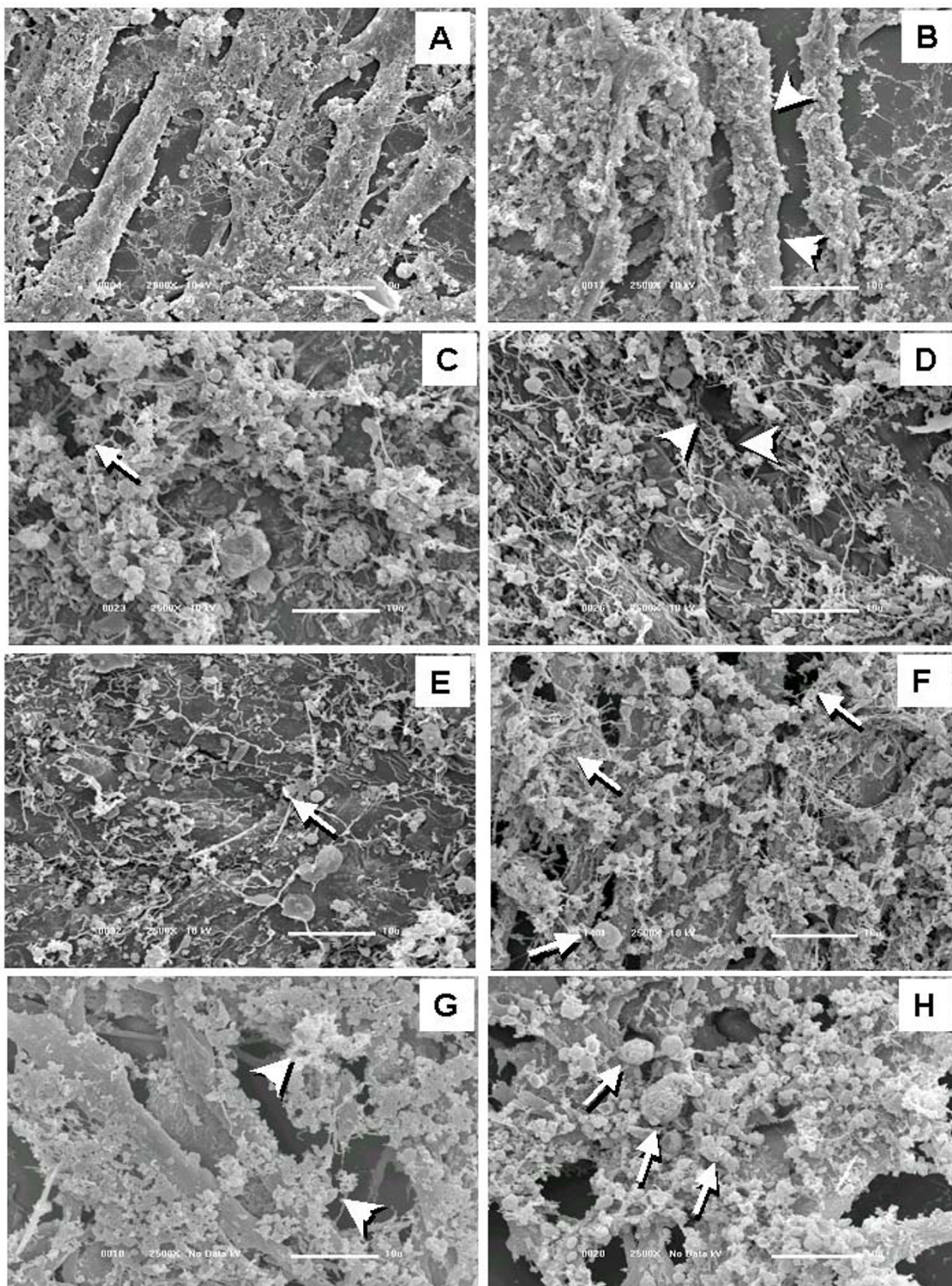


Figure 6

SEM of C_2C_{12} myotubes treated with WF (5, 10, 15, 20, 25 $\mu\text{g.mL}^{-1}$ for 24 h). A, in the absence of WF, C_2C_{12} myotubes had a normal, elongated shape. B-H, C_2C_{12} myotubes incubated for 24 h with 1 (B), 3 (C), 5 (D), 10 (E), 15 (F), 20 (G) and 25 (H) $\mu\text{g.mL}^{-1}$ of WF. The morphological analysis of WF-treated C_2C_{12} cells revealed a loss of cell-to-cell contact, with consequent detachment and damage to the collagen matrix (arrowheads), cell retraction, altered cell shape and vesicle formation (arrows in panel E, F and H). 2500 \times .

Conclusion

Rapid neoplastic growth induces detrimental changes in the host as a result of carcass wasting. WF may produce its effects by direct and indirect mechanisms that involve the inhibition of protein synthesis and increase the protein degradation associated with an increase in oxidative stress in C₂C₁₂ myotubes, in a manner similar to the host tissue wastage seen in cancer patients.

Abbreviations

CDNB – 1-chloro-2,4-dinitrobenzene; DMEM – Dulbecco's modified Eagle's medium; ECL – enhanced chemical luminescence FCS – foetal calf serum; GST – glutathione-S-transferase; HB – homogenising buffer; HRP – horse radish peroxidase; IL6 – interleukin 6; MDA – malondialdehyde; MTT – 3-(4,5-dimethylthiazol-2-yl)-2,5-diphenyltetrazolium bromide; NAC – Nucleic acid content; NRU – neutral red uptake; PBS – phosphate buffered saline; PIF – proteolysis inducing factor; ROS – reactive oxygen species; SDS-PAGE – sodium dodecyl sulphate polyacrylamide gel electrophoresis; SUC-LLVY-AMC – succinyl-Leu-Leu-Val-Try-7-amino-4-methylcoumarin; TCA – trichloro acetic acid; TNF α – tumour necrosis factor; WF – Walker Factor.

Competing interests

The author(s) declare that they have no competing interests.

Authors' contributions

The author CLY, GV and WJF contributed to the data collection, analysis, data interpretation, and manuscript preparation. The author MJT participated in the design of the study and contributed to manuscript preparation. The author MCCGM conceived the study and its design and coordinated the works and manuscript preparation. All authors read and approved the final manuscript.

Acknowledgements

The authors thank Dr. Juvenal Marcondes Neto for computational assistance, Dr. Hernandes Faustino Carvalho for protease activity analysis and Dr. Stephen Hyslop for editing the text. This work was supported by grants from Fundação de Amparo à Pesquisa de São Paulo (FAPESP, grant # 01/02135-5; 04/00514-5, 07/02480-9), Conselho Nacional de Desenvolvimento Científico e Tecnológico (CNPq, grant # 306084/2004-0) and Fundo de Apoio ao Ensino e à Pesquisa (FAEP-UNICAMP). Dr. Claudia Lumy Yano was supported by a studentship from Coordenação de Aperfeiçoamento de Pessoal de Nível Superior (CAPES).

References

- Albrecht JT, Canada TW: **Cachexia and anorexia in malignancy.** *Hematol Oncol Clin North Am* 1996, **10**:791-800.
- Fearon K, Moses A: **Cancer cachexia.** *Int J Cardiol* 2002, **85**:73-81.
- Costelli P, Baccino FM: **Cancer cachexia: from experimental models to patient management.** *Curr Opin Clin Nutr Metab Care* 2000, **3**:177-181.
- Strelkov ABC, Fields ALA, Baracos VE: **Effect of systemic inhibition of prostaglandin production on protein metabolism in tumour-bearing rats.** *Am J Physiol* 1989, **275**:C261-269.
- Lorite MJ, Cariuk P, Tisdale MJ: **Induction of muscle protein degradation by a tumour factor.** *Br J Cancer* 1997, **76**:1035-1040.
- Strassmann G, Fong M, Freter CE, Windsor S, D'Alessandro F, Nordan RP: **Suramin interferes with interleukin-6 receptor binding in vitro and inhibits colon-26-mediated experimental cancer cachexia in vivo.** *J Clin Invest* 1993, **92**:2152-2159.
- Garcia-Martinez C, López-Soriano FJ, Argilés JM: **Interleukin-6 does not active protein breakdown in rat skeletal muscle.** *Cancer Lett* 1994, **76**:1-4.
- Matthys P, Billiau A: **Cytokines and cachexia.** *Nutrition* 1997, **13**:763-770.
- Todorov P, Cariuk P, Mc Devitt T, Coles B, Fearon KC, Tisdale MJ: **Characterization of a cancer cachectic factor.** *Nature* 1996, **22**:739-742.
- Cariuk P, Lorite MJ, Todorov PT, Field WN, Wigmore SJ, Tisdale MJ: **Induction of cachexia in mice by a product isolated from the urine of cachectic cancer patients.** *Br J Cancer* 1997, **76**:606-613.
- Belizario JE, Kartz M, Chenker E, Raw I: **Bioactivity of skeletal muscle proteolysis-inducing factors in the plasma protein from cancer patients with weight loss.** *Br J Cancer* 1991, **63**:705-710.
- Gomes-Marcondes MC, Smith HJ, Cooper JC, Tisdale MJ: **Development of an in-vitro model system to investigate the mechanism of muscle protein catabolism induced by proteolysis-inducing factor.** *Br J Cancer* 2002, **86**:1628-33.
- Eley HL, Tisdale MJ: **Skeletal muscle atrophy, a link between depression of protein synthesis and increase in degradation.** *J Biol Chem* 2007, **282**:7087-7097.
- Fujiki F, Mukaida N, Hirose K, Ishida H, Harada A, Ohno S, Bluethmann H, Kawakami M, Akiyama M, Sone S, Matsushima K: **Prevention of adenocarcinoma colon 26-induced cachexia by interleukin 10 gene transfer.** *Cancer Res* 1997, **57**:94-99.
- Todorov PT, Field WN, Tisdale MJ: **Role of a proteolysis-inducing factor (PIF) in cachexia induced by a human melanoma (G361).** *Br J Cancer* 1999, **80**:1734-1737.
- Cabal-Manzano R, Bhargava P, Torres-Duarte A, Marshall J, Bhargava P, Wainer IW: **Proteolysis-inducing factor is expressed in tumours of patients with gastrointestinal cancers and correlates with weight loss.** *Br J Cancer* 2001, **84**:1599-1601.
- Ushmorov A, Ilich V, Droge W: **Differential reconstitution of mitochondrial respiratory chain activity and plasma redox state by cysteine and ornithine in a model of cancer cachexia.** *Cancer Res* 1999, **59**:3527-3534.
- Theologides A, Ingersoll-Stroubos AM, Apple FS: **TNF- γ effect on oxygen free radical scavenging and generating enzymes in rat liver.** *Biochem Mol Biol Int* 1994, **33**:205-210.
- Cahlin C, Korner A, Axelsson H, Wang W, Lundholm K, Svanberg E: **Experimental cancer cachexia: the role of host-derived cytokines interleukin 1L;6 IL-12 interferon-gamma and tumour necrosis factor alpha evaluated in gene knockout tumour-bearing mice on C57Bl background and eicosanoid-dependent cachexia.** *Cancer Res* 2000, **60**:5488-5493.
- Emery PV: **Cachexia in experimental models.** *Nutrition* 1999, **15**:600-603.
- Gomes-Marcondes MC, Honma HN, Áreas MA, Cury L: **Effect of Walker 256 tumour growth on intestinal absorption of leucine methionine and glucose in newly weaned and mature rats.** *Braz J Med Biol Res* 1998, **31**:1345-1348.
- Bradford MM: **A rapid and sensitive method for the quantification of microgram quantities of protein utilizing the principle of protein-dye binding.** *Anal Biochem* 1976, **72**:248-254.
- Mossman T: **Rapid colorimetric assay for cellular growth and survival: application to proliferation and cytotoxicity assays.** *J Immunol Methods* 1983, **65**:55-63.
- Borenfreund G, Puerner JA: **Toxicity determined in vitro by morphological alternatives and neutral red absorption.** *Toxicol Lett* 1995, **24**:110-124.
- Cinti MR, De Angelis I, Fortunati E, Reggiani D, Bianchi VV, Tiozzo R, Zucco F: **Choice and standardisation of test protocols in cytotoxicology: a multicenter approach.** *Toxicol In Vitro* 1991, **5**:119-125.
- Habig WH, Pabst MJ, Jakoby WB: **Glutathione S-transferases The first step in mercapturic acid formation.** *J Biol Chem* 1974, **249**:7130-7139.

27. Gomes-Marcondes MC, Tisdale MJ: **Induction of protein catabolism and the ubiquitin-proteasome pathway by mild oxidative stress.** *Cancer Lett* 2002, **180**:69-74.
28. White ME, Allen CE, Dayton WR: **Effect of sera from fed and fasted pigs on proliferation and protein turnover in cultured myogenic cells.** *J Anim Sci* 1988, **66**:34-42.
29. Gad SC, Weil CS: **Statistics for toxicologists.** In *Principles and Methods of Toxicology* Edited by: Wallace H. Raven Press New York; 1994:221-274.
30. Tisdale MJ: **The 'cancer cachectic factor'.** *Support Care Cancer* 2003, **11**:73-78.
31. Todorov PT, Deacon M, Tisdale MJ: **Structural analysis of a tumor-produced sulfated glycoprotein capable of initiating muscle protein degradation.** *J Biol Chem* 1997, **272**:12279-12288.
32. Lundholm K, Bylund AC, Holm J, Schersten T: **Skeletal muscle metabolism in patients with malignant tumour.** *Eur J Cancer* 1976, **12**:465-473.
33. Bossola M, Muscaritoli M, Costelli P: **Increased muscle ubiquitin mRNA levels in gastric cancer patients.** *Am J Physiol* 2001, **280**:R1518-1523.
34. Williams A, Sun X, Fischer JE, Hasselgren P-O: **The expression of genes in the ubiquitin-proteasome proteolytic pathway is increased in skeletal muscle from patients with cancer.** *Surgery* 1999, **126**:744-750.
35. Tisdale MJ: **The ubiquitin-proteasome pathway as a therapeutic target for muscle wasting.** *J Support Oncol* 2005, **3**:209-217.
36. Siddiqui RA, Williams JF: **The regulation of fatty acid and branched-chain amino acid oxidation in cancer cachectic rats: A proposed role for a cytokine eicosanoid and hormone trilogy.** *Biochem Med Metab Biol* 1989, **42**:71-86.
37. Siddiqui RA, Williams JF: **Tentative identification of the toxohormones of cancer cachexia: roles of vasopressin prostaglandin E₂ and cachectic-TNF.** *Biochem Int* 1990, **20**:787-797.
38. Machado AP, Costa Rosa LF, Seelaender MC: **Adipose tissue in Walker 256 tumour-induced cachexia: possible association between decreased leptin concentration and mononuclear cell infiltration.** *Cell Tissue Res* 2004, **318**:503-514.
39. Benitez-Verguizas J, Loarte D, de Miguel F, Esbrit P: **Effects of transforming growth factor beta 1 on cell growth and parathyroid hormone-related protein in Walker 256 tumor cells.** *Life Sci* 1999, **65**:1807-1816.
40. Deans DAC, Wigmore SJ, Gilmour H, Tisdale MJ, Fearon KCH, Ross JA: **Expression of the proteolysis-inducing factor core peptide mRNA is upregulated in both tumour and adjacent normal tissue in gastro-oesophageal malignancy.** *Br J Cancer* 2006, **94**:731-736.
41. Seelaender MC, Nascimento CM, Curi R, Williams JF: **Studies on lipid metabolism of Walker 256 tumour-bearing rats during the development of cancer cachexia.** *Biochem Mol Biol Int* 1996, **39**:1037-1047.
42. Curi R, Fernandes LC, Razi SE, Boeckh-Haeisch EM, Machado UF, Guimarães ARP, Homem de Bittencourt PI, Carpinelli AR: **The central role of insulin for the establishment of cachexia in Walker 256 tumour-bearing rats.** *Cancer Res Ther Control* 1999, **10**:109-118.
43. Mahony SM, Tisdale MJ: **Metabolic effects of tumour necrosis factor alpha in NMRI mice.** *Br J Cancer* 1990, **61**:514-519.
44. Baracos VE: **Regulation of skeletal muscle protein turnover in cancer associated cachexia.** *Nutrition* 2000, **16**:1015-1018.
45. Yasmineh WG, Parkin JL, Caspers JJ, Theologides A: **Tumour necrosis factor/cachectin decreases catalase activity of rat liver.** *Cancer Res* 1991, **51**:3990-3995.
46. Yamaguchi Y, Sato K, Endo H: **Depression of catalase gene expression in the liver of tumour-bearing nude mice.** *Biochem Biophys Res Commun* 1992, **189**:1084-1089.
47. Popadiuk S, Korzon M, Renke J, Wozniak M: **Carbonyl groups content on the basis of protein peroxidation analysis with total antioxidant status in blood of children with cancers.** *Wiad Lek* 1998, **51**:107-112.
48. Lo YYC, Cruz TF: **Involvement of reactive oxygen species in cytokine and growth factor induction of c-fos expression in chondrocytes.** *J Biol Chem* 1995, **270**:11727-11730.
49. Tang DG, Guan KL, Li L, Honn KV, Chen YQ, Rice RL, Taylor JD, Porter AT: **Suppression of W256 carcinosarcoma cell apoptosis by arachidonic acid and other polyunsaturated fatty acids.** *Int J Cancer* 1997, **73**:1078-1087.
50. Primeau AJ, Adhihetty PJ, Hood DA: **Apoptosis in heart and skeletal muscle.** *Can J Appl Physiol* 2002, **27**:349-395.
51. Bar-Shai M, Reznick AZ: **Reactive nitrogen species induce nuclear factor- κ B-mediated protein degradation in skeletal muscle cells.** *Free Radical Biol Med* 2006, **40**:2112-2125.
52. Wyke SM, Tisdale MJ: **NF- κ B mediates proteolysis-inducing factor induced protein degradation and expression of the ubiquitin-proteasome system in skeletal muscle.** *Br J Cancer* 2005, **92**:711-721.

Pre-publication history

The pre-publication history for this paper can be accessed here:

<http://www.biomedcentral.com/1471-2407/8/24/prepub>

Publish with **BioMed Central** and every scientist can read your work free of charge

"BioMed Central will be the most significant development for disseminating the results of biomedical research in our lifetime."

Sir Paul Nurse, Cancer Research UK

Your research papers will be:

- available free of charge to the entire biomedical community
- peer reviewed and published immediately upon acceptance
- cited in PubMed and archived on PubMed Central
- yours — you keep the copyright

Submit your manuscript here:
http://www.biomedcentral.com/info/publishing_adv.asp

