

RESEARCH ARTICLE

Open Access

Implication of metastasis suppressor gene, Kiss-1 and its receptor Kiss-1R in colorectal cancer

Ke Ji¹, Lin Ye¹, Fiona Ruge¹, Rachel Hargest¹, Malcolm D Mason² and Wen G Jiang^{1*}

Abstract

Background: Kiss-1 and Kiss-1R have been suggested as a novel pair of metastasis suppressors for several human solid tumours, however, their role in colorectal cancer remains largely unknown. Therefore, the aim of this study was to investigate the role and signal transduction of Kiss-1 and Kiss-1R in colorectal cancer.

Methods: Ribozyme transgenes were used to knockdown high expression of Kiss-1 and Kiss-1R in HT115 and HRT18 cells. The stabilized transfected cells were then used to deduce the influence of Kiss-1 and Kiss-1R on the function of colorectal cancer cells by *in vitro* assays and ECIS assay. The effect of Kiss-1 on MMPs related to tumour metastasis was also deleted by zymography. The mRNA and protein expression of Kiss-1 and Kiss-1R, and their correlation to the clinical outcome in human colorectal cancer were investigated using real-time PCR and IHC respectively.

Results: Knocking down Kiss-1 resulted in increased invasion and migration of colorectal cancer cells. Kisspeptin-10 decreased cellular migration of colorectal cancer cells and required ERK signaling as shown during the ECIS based analyses. Reduction of MMP-9 was caused by Kisspeptin-10 and ERK inhibitor, shown by zymography. In human colorectal cancer tissues, the mRNA expression level of Kiss-1 had a negative correlation with Dukes staging, TNM staging, tumour size and lymph node involvement. Reduction of Kiss-1R was also linked to poor prognosis for the patients.

Conclusions: The present study has presented evidence that Kiss-1 may be a putative metastasis suppressor molecule in human colorectal cancer.

Keywords: Metastasis suppressor gene, Kiss-1, Kiss-1R, GPR54, Colorectal cancer, Migration, Invasion, MMP-9, ERK signal pathway

Background

Colorectal cancer (CRC) is the second most commonly diagnosed cancer and is a major cause for mortality and morbidity globally [1].

The *Kiss-1* gene was identified as a human melanoma metastasis suppressor gene through the analysis of subtractive hybridization in highly metastatic cell lines as compared to non-metastatic cell lines [2]. The *Kiss-1* gene encodes a protein of 145-amino-acids, which is subsequently cleaved into a family of Kisspeptins, including Kisspeptin-10, Kisspeptin-13, Kisspeptin-14, Kisspeptin-54 respectively [3-5]. Its receptor, Kiss-1R, also known as G-

protein coupled receptor 54 (GPR54) was first discovered and cloned from rat brain in 1999 [6].

Kiss-1 and Kiss-1R have been suggested as a novel pair of metastasis suppressors in most cancers [5,7-11]. Correlation between decreased expression of Kiss-1 and poor clinical outcomes has been evident in most malignancies that have been investigated. One possible explanation for the role played by Kiss-1 in cancer biology could be extrapolated from the relationship between Kiss-1 and matrix metalloproteinases (MMPs), whose significance in tumour invasion and metastasis formation is well known [12]. However, few studies have specifically shown a role for Kiss-1 in colorectal cancer as yet.

In this study, we examined the expression of Kiss-1 and Kiss-1R in human colorectal cancer and analyzed the potential clinical and prognostic implications. After that, we investigated their effect on the function of

* Correspondence: jiangw@cardiff.ac.uk

¹Cardiff University-Peking University Joint Oncology Institute, Metastasis & Angiogenesis Research Group, Cardiff University School of Medicine, Cardiff CF14 4XN, UK

Full list of author information is available at the end of the article

colorectal cancer cells. On the basis of the data from these experiments, Kiss-1 may play a metastasis suppressor role in human colorectal cancer and be linked to the disease progression of patients, by way of aberrant expression and molecular and cellular mechanism (s) that are yet to be identified.

Methods

Patients and tissue specimens

Colorectal cancer tissues (n = 94) and normal background tissues (n = 80) were collected immediately after surgery with approval by the South East Wales Local Research Ethics Committee (ref 05/WSE03/92) and patients' consent. The tissue samples were stored in a deep freezer (-80°C) until further use. Patients were routinely followed after surgery and the median follow up period was 120 months. Tumour tissues and normal tissues (>10 cm away from the tumor margin) were obtained with confirmation by a pathologist.

Cell culture

HT115 and HRT18 cancer cell lines were obtained from the European Collection of Animal Cell Culture (ECACC, Salisbury, England, UK).

Peptide receptors and inhibitors, antibodies

ERK inhibitorII (FR180204) (Calbiochem, Germany), Kisspeptin-10 (No.2570) (Tocris Bioscience, Bristol, UK) and Kisspeptin-234 (Tocris Bioscience, Bristol, UK). Kisspeptin-10, a short peptide of 10 amino acids, is proteolytically processed from Kiss-1 [13]. Kisspeptin-234 is a Kisspeptin-10/Kiss-1R antagonist, which belongs to Kisspeptin-10 analog. Antibodies to Kiss-1 (SC-101246) and Kiss-1R (SC-48220) were purchased from Santa Cruz Biotechnologies Inc., (Santa Cruz, CA, USA).

RNA isolation, cDNA synthesis, RT-PCR, Q-PCR and immunohistochemical staining

RNA extraction kits, reverse transcription kits and RT-PCR Mix were purchased from Promega (WI, USA) and Bio-Rad (CA, USA). Conventional PCR primers were designed using Beacon Designer (Palo Alto, CA, USA) and synthesized by Invitrogen (Paisley, Scotland, UK). Following the manufacturer's protocol, total RNA was isolated using TRI reagent (Sigma). The concentration of RNA was detected by a UV spectrophotometer at 260 and 280 nm. cDNA samples were synthesized and the final reaction volume was 20µl. Primers used for RT-PCR are given in Table 1, and GAPDH was used as the house keeping control.

Real-time quantitative PCR, based on the Amplifluor™ technology, was used to quantify the level of mRNA expression of Kiss-1 and Kiss-1R from the cDNA samples of colorectal tissues and cells, mentioned above. All colorectal cDNA samples were synchronously examined for Kiss-1 and Kiss-1R along with a set of internal controls. Q-PCR primers (Table 1) were designed using Beacon Design software (PREMIER Biosoft, Palo Alto, CA). Real-time PCR was carried out using an IcylerIQ™ (Bio-Rad, Hemel Hempstead, UK) with the following cycling conditions: 94°C for 5 min, 80–90 cycles of: 94°C for 10 sec, 55°C for 35 sec and 72°C for 20 sec.

Frozen sections of colorectal tumours and adjacent background tissues were sectioned at a thickness of 6 µm using a cryostat. The samples were mounted onto Super Frost Plus microscope slides (Fisher, UK). The samples were fixed in a mixture of 50% acetone and 50% methanol and then air-dried. After rehydration and blocking with 5% horse serum solution, the sections were probed with the appropriate primary antibody and secondary antibodies. Following the instructions, the

Table 1 Primer sequences used for RT-PCR and Q-PCR in this study

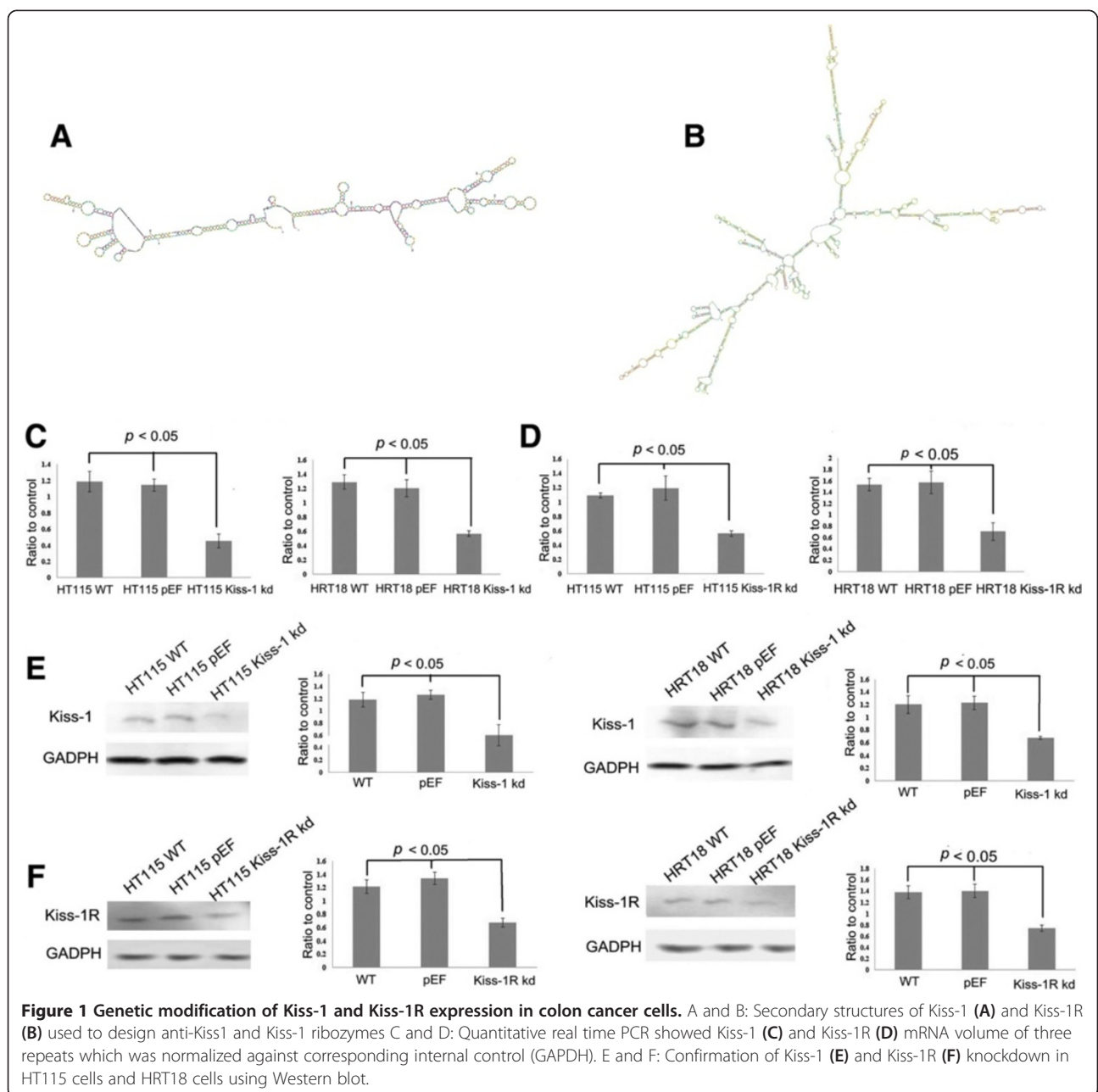
Genes		Sense (5'-3')	Antisense (5'-3')
Kiss-1	Conventional PCR	TGAACCTCACTGGTTTCTTGG	CGAAGGAGTTCAGTTGTAG
	Quantitative PCR	CATTAGAAAAGGTGGCCTCT	ACTGAACCTGACCGTACAGCCAGGGATTCTAGCTG
	Anti-Kiss1 ribozyme1	CTGCAGCTCTCGGGGGCG GGGACAGCGAGGTCCCCC TGATGAGTCCGTGAGGA	ACTAGTGCCAGCTGCTACTGCCAGGCTGACCCGTTT CGTCTCACGGACT
	Anti-Kiss-1 ribozyme2	CTGCAGCACCGCCCTGGGGTG CGGGCTGATGAGTCCGTGAGGA	ACTAGTGCCGCCCCCACAGCCGCCAGATTTCTGTC TCACGGACT
Kiss-1R	Conventional PCR	CTTCATGTGCAAGTTCGTC	CACCAGGAACAGCTGGAT
	Quantitative PCR	GCTGGTCATCTACGTCATCT	ACTGAACCTGACCGTACACAGCACAGGAGGAAGGTC
	Anti-Kiss-1R ribozyme1	CTGCAGTCCGCATCGGCTTGTGG CGGCACTGATGAGTCCGTGAGGA	ACTAGTTCGCTGGTCACTACGTCATTTCTGTCCTCACGGACT
	Anti-Kiss-1R ribozyme2	CTGCAGAGCCTACCCAGATGCTG AGGCTCTGATGAGTCCGTGAGGA	ACTAGTGCCCCGCTGGCGCTGGCTGTTCTGTCCTCACGGACT
GAPDH	Conventional PCR	GGCTGCTTTAACTCTGGTA	GACTGTGGTCATGAGTCCTT
	Quantitative PCR	CTGAGTACGTCGTGGAGTC	ACTGAACCTGACCGTACACAGAGATGATGACCCTTTTG

avidin-biotin complex (Vector Laboratories, Burlingame, CA, USA) was applied before staining with diaminobenzidine chromogen. Nuclei were counterstained in Mayer's haematoxylin. Sections from fresh frozen human placenta were used as positive controls.

Generation of Kiss-1 and Kiss-1R ribozyme transgenes and stable transfectants

Hammerhead ribozymes targeting Kiss-1 and Kiss-1R were designed using Zuker's mRNA Fold programme [14] based on the secondary structure of Kiss-1 and Kiss-1R mRNA (Figure 1A and B, respectively). The ribozymes

were synthesized using touchdown PCR and cloned into the pEF6/V5-His TOPO TA expression plasmid vector (Invitrogen, Paisley, UK) according to the protocol provided. Ribozyme transgenes and empty plasmids were transfected into the two colorectal cell lines HT115 and HRT18 respectively, utilizing an Easyjet Plus electroporator (EquiBio, Kent, United Kingdom). Following selection using blasticidin, verified transfectants which lost the expression of Kiss-1 and Kiss-1R were used in subsequent experiments. During these experiments, cDNA generated from human placenta was used as a positive control.



***In vitro* cell function assays**

***In vitro* cell growth assay**

Cells were seeded into 96-well plates at 2,500 cells/well, and cultured using normal media (10% fetal calf serum, 0.1% antibiotics). The cells were cultured in triplicate for 1, 3 and 5 days. After incubation the cells were fixed in 4% formalin and stained with 0.5% crystal violet (w/v). The stained crystal violet was then extracted using 10% (v/v) acetic acid, and the absorbance was determined using a spectrophotometer (Bio-Tek, ELx800) at a wavelength of 540 nm.

***In vitro* cell adhesion assay**

A 96-well plate was precoated with 5 µg of Matrigel (Collaborative Research Products, Bedford, Massachusetts, USA) and allowed to air dry. Following rehydration using serum free media, 40,000 cells were seeded into each well. After 40 minutes of incubation, non-adherent cells were washed off using BSS. The adherent cells were then fixed with 4% formalin and stained using 0.5% crystal violet. The number of adherent cells were counted under a microscope.

***In vitro* invasion assay**

Transwell inserts (with 8 µm pore) were precoated with 50 µg of Matrigel and air dried. Following rehydration, 40,000 cells were seeded into each insert. After incubation for three days, cells which had invaded through the matrix and adhered to the other side of the insert were fixed in 4% formalin, and stained with 0.5% (w/v) crystal violet. The number of invaded cells was then counted under a microscope.

***In vitro* wounding assay for cellular migration**

Cells were seeded into a 24-well plate at a density of 200,000 per well and allowed to form a monolayer of cells. The monolayer of cells was then scraped to create a wound. Migration of cells at the wound edges were monitored over a period up to 18 hours. Optimas 6.0 motion analysis (Meyer Instruments, Houston, Texas) was used to track the leading edge of cells to measure the distance of migration.

Electric cell-substrate impedance sensing (ECIS)

The ECIS system (Ztheta, Applied Biophysics Inc., USA) was used to quantify cell migration as previously reported by Jiang *et al.* [15]. HT115 cells were prepared for six repeats per group and seeded at 40,000 cells per well in 200 µl of DMEM medium alone or medium supplemented with 200 nM ERK small inhibitor, 300 nM Kisspeptin-10 and 300 nM Kisspeptin-234.

Gelatin zymography assay

Cells were counted and 1×10^6 cells were seeded to a tissue culture flask. After an overnight incubation and 4 hours

treatment with appropriate peptide receptor or inhibitor (300 nM Kisspeptin-10, 300 nM Kisspeptin-234 or 200 nM ERK inhibitor), the medium was collected. This method is well established within the laboratory, and has previously been published [16].

Data analysis

The relationship between the expression of Kiss-1 and Kiss-1R and tumour grade, TNM staging and nodal status was respectively analyzed using Mann-Whitney U test (Tables 2 and 3). Quantitative data of IHC, *in vitro* assays, ECIS assay and zymography assay was analyzed using the Student's test, Kruskal-Wallis and chi-squared test, where appropriate. Survival analysis and multivariate analysis were carried out using the SPSS20 software package. Differences were considered to be statistically significant at $p < 0.05$.

Results and discussion

Kiss-1 and Kiss-1R expression in colorectal adenocarcinoma tissues and the histopathological/clinical characteristics of the disease

Kiss-1 and Kiss-1R expression was analysed in colorectal cancer tissues and adjacent normal tissues using real time PCR (Tables 2 and 3). Decreased levels of Kiss-1 transcript were seen in Dukes B and C tumours compared with Dukes A carcinomas ($p < 0.05$). The expression level of Kiss-1 decreased as TNM stage progressed, and statistical analysis revealed significant links between TNM stage I and stage III&IV. A significantly decreased expression of Kiss-1R was observed in tumour tissues compared with normal background tissues. Interestingly, Kiss-1R expression in patients undergoing chemo-radiotherapy was considerably higher in comparison to that in patients without therapy.

A significant difference was also observed in the expression levels between living patients and those who had died. The average copy numbers of Kiss-1 and Kiss-1R transcripts in Dukes B were then employed as the respective thresholds for the survival analysis. Kaplan-Meier survival analysis demonstrated that patients with a low expression level of Kiss-1 appeared to have similar overall survival and disease free survival compared to patients with high expression of Kiss-1 ($p > 0.05$). In contrast to Kiss-1, the expression pattern of Kiss-1R revealed that high levels of Kiss-1R transcript are associated with both a poor overall survival (Figure 2C, $p = 0.0011$) and poor disease free survival (Figure 2D, $p = 0.0033$). Multivariate analyses have further demonstrated that T-stage and Kiss-1R are independent prognostic factors ($p = 0.025$ and $p = 0.003$, respectively) for colorectal related death. Furthermore, TNM staging and Kiss-1R ($p = 0.03$ and $p = 0.012$, respectively) are independent prognostic factors for colorectal cancer related incidence (death, recurrence and metastasis) (Table 4).

Table 2 The correlation of mRNA expression of Kiss-1 and clinical parameters

Category	No.	Median	IQR	<i>p</i>	<i>p</i> ^a
T/N ^b					
Normal	80	97	6-2345		
Tumour	94	35	1-2108	0.3775	
Paired T/N ^b					
Paired normal	68	82	6-2344		
Paired tumour	68	8	0-1855	0.1672	
Location					
Left colon	22	624	173-1968		
Right colon	28	719	44-2000	0.899	
Transcolon ^c	2	154	N/A	0.958	
Rectum	22	673	175-2522	0.907	
Dukes classification					
A	7	5539	848-24856		
B	33	780	104-2272	0.043 ^d	
C	32	611	190-1221	0.015 ^d	
Tumour stage					
T1	2	8000	N/A		
T2	10	1721	789-10369	1	
T3	40	639	71-1332	0.226	0.0381 ^d
T4	18	592	215-1600	0.186	
Lymph node involvement					
Node 0 ^e	39	872	213-2874		
Node 1 ^e	16	715	67-1428	0.326	
Node 2 ^e	15	609	200-643	0.045 ^d	
TNM staging					
I	9	2081	814-20038		
II	30	756	122-2473	0.06	
III&IV	32	611	190-1221	0.009 ^d	
Clinical outcome					
No invasion	50	835	127-2372		
Invasion	26	579	161-948	0.1907	
Disease free	35	759	84-2081		
Incidence	23	635	217-2187	0.8115	
No recurrence	58	735	89-2373		
Local recurrence	7	643	269-3718	0.604	
No metastasis	50	735	84-2522		
Metastasis	19	634.3	213-1463	0.92	
Alive	36	661	86-1876		
Death	22	572	195-1644	0.923	

^aTumour (T), Normal (N). ^bTransverse colon. ^c*p* < 0.05. ^dNode 0 stands for no node involvement; Node 1 stands for 1 to 3 lymph nodes close to the bowel found to contain cancer cells; Node 2 stands for more than 3 lymph nodes found to contain cancer cells and further than 3cm away from the main tumor in the bowel or the presence of cancer cells in lymph nodes connected to the main blood vessels around the bowel.

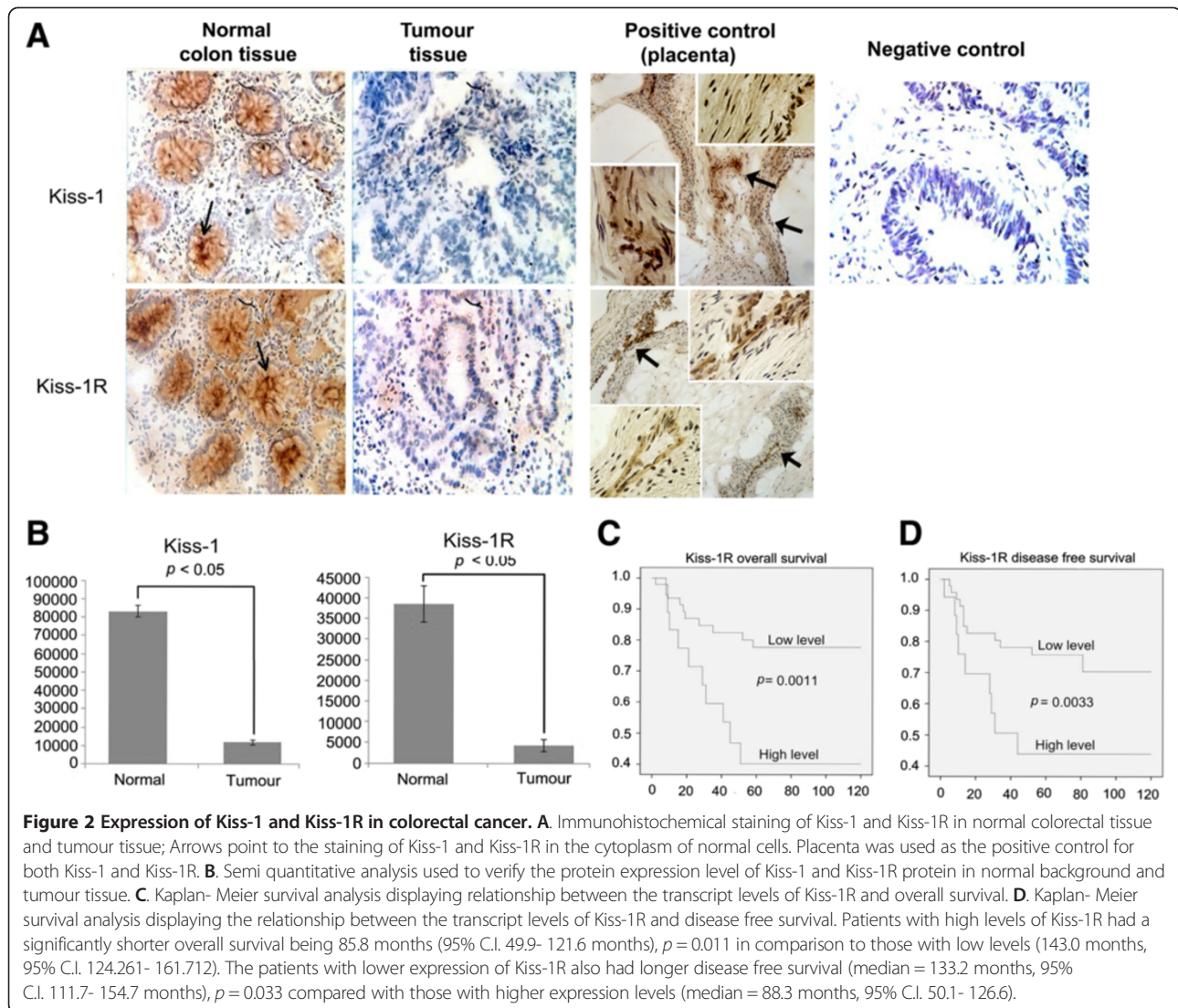
Immunochemical staining was carried out on a portion of paired normal and tumour tissues (n = 23 pairs). Intense expression of Kiss-1 and Kiss-1R was primarily observed in

the cytoplasm of epithelial cells in adjacent normal tissues compared with cancer cells (*p* value < 0.05), as shown in Figure 2A and B.

Table 3 The correlation of mRNA expression of Kiss-1R and clinical parameters

Category		No.	Median	IQR	p
T/N ^a	Normal	80	30	1-2406	
	Tumour	94	<0.000001	<0.000001	<0.0001 ^c
Paired T/N ^a	Paired normal	68	23	0-522	
	Paired tumour	68	<0.000001	0-0.02	<0.0001 ^c
Location	Left colon	22	<0.000001	<0.000001-0.01	
	Right colon	28	<0.000001	<0.000001-0.009	0.8791
	Transcolon ^b	2	0.00452	N/A	
	Rectum	22	<0.000001	<0.000001-0.13	0.447
Dukes classification	A	7	0.00015	<0.000001-0.00103	
	B	33	0.0004	<0.000001-0.0091	0.6616
	C	32	<0.000001	<0.000001-0.09	0.1431
Tumour stage	T1	2	1.06E-05	N/A	
	T2	10	0.00005	<0.000001-0.00171	
	T3	40	<0.000001	<0.000001-0.03	
	T4	18	<0.000001	<0.000001-0.02	
Lymph node involvement	Node 0 ^d	39	0.0003	<0.000001-0.0071	
	Node 1 ^d	16	<0.000001	<0.000001-0.02	0.3236
	Node 2 ^d	15	0.01	<0.000001-1.76	0.335
TNM staging	I	9	0.00003	<0.000001-0.00033	
	II	30	0.0005	<0.000001-0.0105	0.1939
	III&IV	32	<0.000001	<0.000001-0.09	0.051
Clinical outcome	No invasion	50	<0.000001	<0.000001-0.008	
	Invasion	26	<0.000001	<0.000001-0.05	0.1907
	Disease free	35	0.00019	<0.000001-0.00523	
	Incidence	23	0.01	<0.000001-0.12	0.0207 ^c
	No recurrence	58	<0.000001	<0.000001-0.013	
	Local recurrence	7	0.00653	<0.000001-0.02245	0.6923
	No metastasis	50	<0.000001	<0.000001-0.009	
	Metastasis	19	<0.000001	<0.000001-0.13	0.0765
	Alive	36	0.00028	<0.000001-0.00724	
	Death	22	<0.000001	<0.000001-0.13	0.0158 ^c
	Non treat	42	0.0002	<0.000001-0.006	
Chemradio	5	0.0796	0.012-0.1607	0.0115 ^c	

^aTumour (T), Normal (N). ^bTransverse colon. ^cp < 0.05. ^dNode 0 stands for no node involvement; Node 1 stands for 1 to 3 lymph nodes close to the bowel found to contain cancer cells; Node 2 stands for more than 3 lymph nodes found to contain cancer cells and further than 3cm away from the main tumor in the bowel or the presence of cancer cells in lymph nodes connected to the main blood vessels around the bowel.



Knockdown of Kiss-1 and Kiss-1R and the consequent effect on functions of colorectal cancer cells

The expression of Kiss-1 and Kiss-1R in both HT115 and HRT18 cells transfected with corresponding ribozyme transgenes was examined using conven-

Table 4 Multivariate analysis for prognostic factors for colorectal related death and incidence (p values)

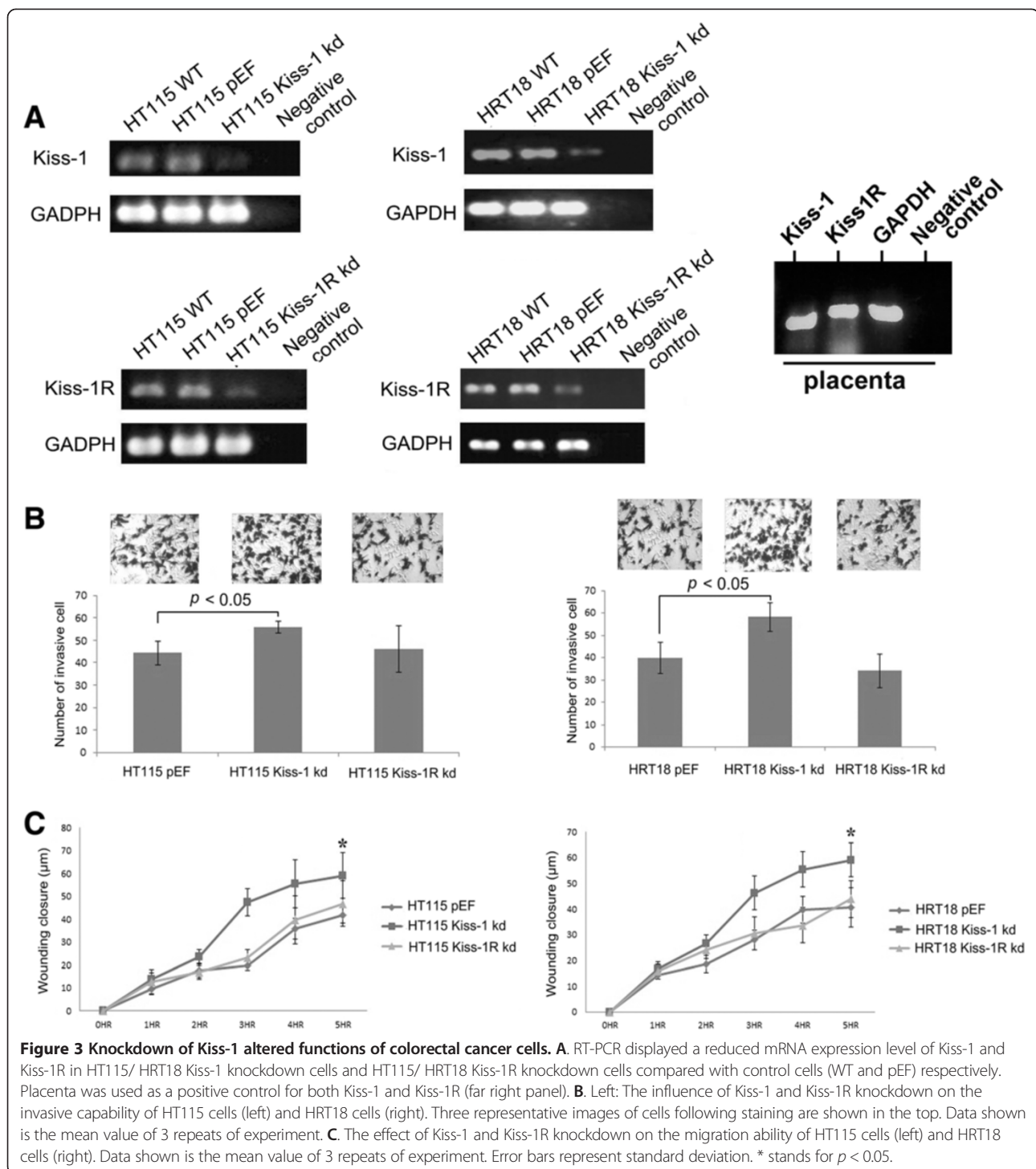
Variables	With colorectal related death	With colorectal related incidence
Dukes stage	0.507	0.249
T-stage	0.025	0.092
TNM stage	0.146	0.030
Node status	0.230	0.057
Differentiation	0.601	0.326
Kiss-1	0.435	0.566
Kiss-1R	0.003	0.012

tional PCR, real time PCR and Western blot (Figures 1 and 3A).

Analysis of the *in vitro* function assays revealed cells with Kiss-1 knockdown had significantly increased invasiveness ($p = 0.015$) and migration ($p = 0.0094$) compared HT115 pEF cells (Figure 3B and C), but knockdown of Kiss-1 and Kiss-1R did not demonstrate a significant change on cell growth and adhesion of HT115 and HRT18 cells ($p > 0.05$).

Effect of Kiss-1 and Kiss-1R knockdown on the motility of the cancer cells and the involvement of ERK pathway

HT115 Kiss-1 knockdown cells treated with Kisspeptin-10 had a significant decrease in motility compared to the control cells (Figure 4A), but no significant difference was observed between control and Kiss-1R knockdown cells. In contrast, neither Kiss-1 knockdown or Kiss-1R knockdown cells treated with Kisspeptin-



234 showed a difference in comparison to the control groups (no treatment) ($p > 0.05$) (Figure 4B). The adherence of Kiss-1 knockdown cells treated with ERK inhibitor significantly decreased compared with that of the control group (no treatment) after wounding ($p = 0.0397$) (Figure 4C). A similar effect was also observed in the comparison between the control group

(no treatment) and cells treated with ERK inhibitor + Kisspeptin-234 (Figure 4E). In contrast to the groups treated with ERK inhibitor or ERK inhibitor together with Kisspeptin-234, there were more striking links between the Kiss-1 knockdown cells treated with ERK inhibitor + Kisspeptin-10 and its control (no treatment) ($p = 0.0164$) (Figure 4D).

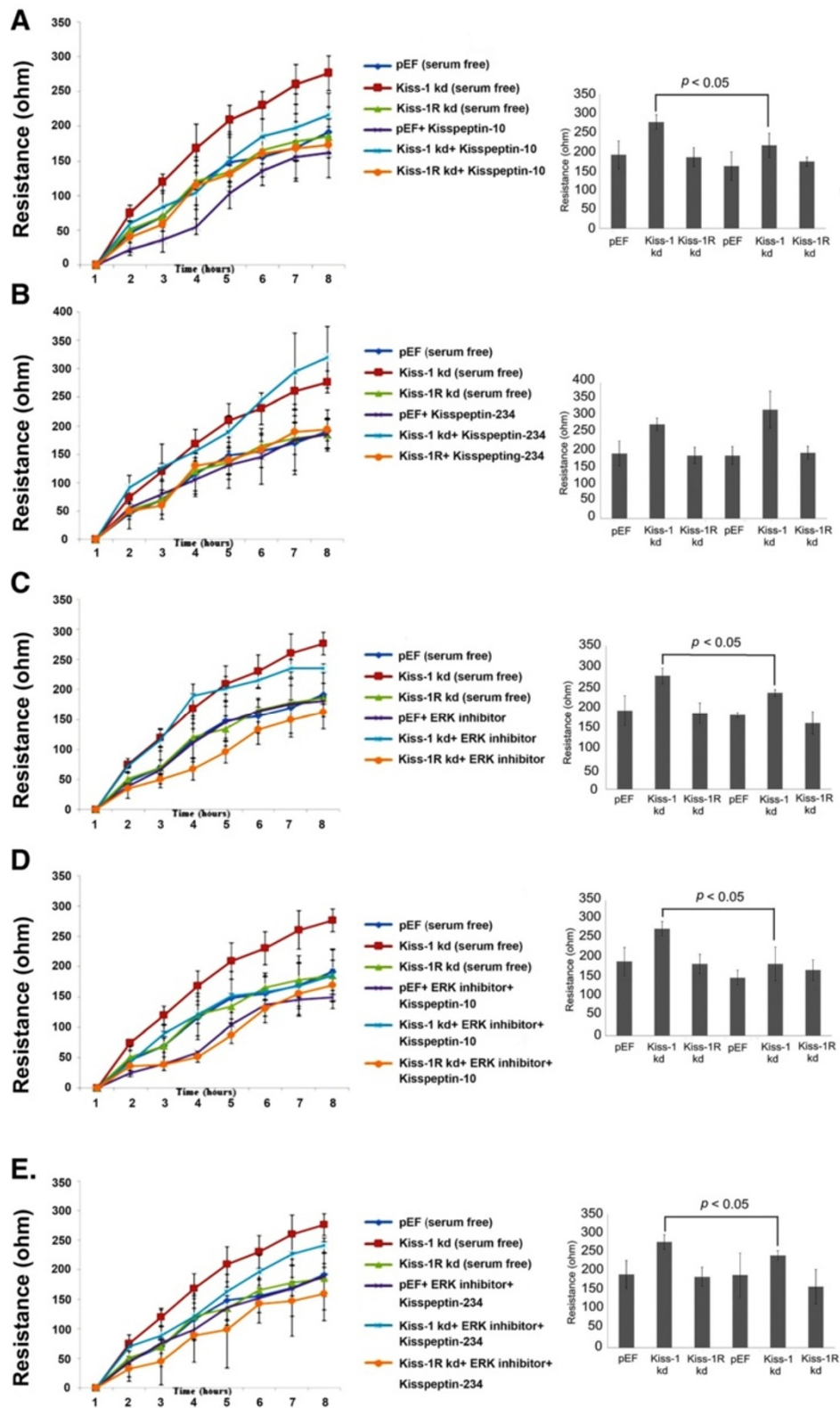


Figure 4 (See legend on next page.)

(See figure on previous page.)

Figure 4 ERK pathway in the Kiss-1 regulated motility of colorectal cancer cells. **A.** Left: The effect of Kiss-1 and Kiss-1R knockdown on the migration ability of HT115 cells treated with Kisspeptin-10 compared with control group (no treatment). Right: Overall changes in resistance at the eighth hour * $p < 0.05$ vs the respective control group at the specific time point. **B.** Left: Cells in two different experimental settings (control and Kisspeptin-234) during 8 hours after wounding. Right: Overall changes in resistance at the eighth hour. **C.** Left: The mean trace of the cells in two groups of experiments (control and ERK inhibitor) 8 hours after wounding. Right: Overall changes in resistance at the eighth hour. **D.** Left: Cell responses after wounding (control and ERK inhibitor + Kisspeptin-10) during 8 hours after wounding. Right: Overall changes in resistance at the eighth hour. **E.** Left: Cells responses in different experimental settings, namely control and ERK inhibitor + Kisspeptin-234, over an 8 hours period after wounding. Right: Overall changes in resistance at the eighth hour.

MMPs are involved in the regulation downstream of Kiss-1/Kiss-1R and ERK pathway

MMP-9 expression levels were evaluated in three pairs of HT115 cells (pEF and Kiss-1 knockdown), which were treated with three different treatments (no treatment, ERK inhibitor, ERK inhibitor and Kisspeptin-10) (Figure 5). The weakest expression of MMP-9 was observed in the cells treated with ERK inhibitor and Kisspeptin-10 (Figure 5A). We further explored the influence of Kiss-1 knockdown together with treatment of Kisspeptin-10 and 234 on MMP-9 and MMP-2 activity, together with the inhibition of the ERK pathway in the HT115 cell line. Cells were divided into three treatment groups, namely no treatment (control group), Kisspeptin-10, and Kisspeptin-234 respectively. For each group, two pairs of HT115 pEF and HT115 Kiss-1 knockdown cells were treated with or without ERK inhibitor, namely + ERK inhibitor and control respectively (Figure 5B). Figure 5C shows expression of Kiss-1 and treatment of the cells with the inhibitors had a greater impact on the enzyme activity of MMP-9 than on that of MMP-2. Hence, the difference in MMP-9 expression in HT115 cells was chosen to analyze further. Figure 5D shows the difference in the enzyme activity of MMP-9 in HT115 pEF (left) and Kiss-1 knockdown (right) cells of all three groups (no treatment, Kisspeptin-10 and Kisspeptin-234). The enzyme activity of MMP-9 in HT115 pEF cells treated with ERK inhibitor was significantly inhibited compared with that of controls in all three groups. Similarly, with HT115 pEF cells, the enzyme activity of MMP-9 in HT115 Kiss-1 knockdown cells treated with ERK inhibitor brought about a strong inhibition in comparison to the controls in the groups of no treatment ($p = 0.00017$) and Kisspeptin-10 (0.001544) (Figure 5D). Furthermore, the results show that both HT115 cells treated with Kisspeptin-10 exhibited a decreased expression of MMP-9 in comparison to the cells treated with serum free medium and Kisspeptin-234.

Conclusions

The expression of Kiss-1 correlated significantly with Dukes classification, TNM staging, tumour stage and lymph node involvement. Interestingly, these stages are classified by the level of tumour invasion and metastasis. Hence, the

conclusion from the clinical cohort was consistent with studies in other malignancies. Kiss-1 has a significant, and negative correlation with tumour metastasis and invasion. Loss of Kiss-1R expression was significantly associated with disease free survival, since increased expression of Kiss-1R may have positive correlation with survival. Moreover, high expression of Kiss-1R transcripts was associated with poor prognosis in both overall survival and disease free survival compared with low expression of Kiss-1R. Aberrant Kiss-1 and Kiss-1R expression is definitely a point for consideration. One hypothesis to explain this may be that the inhibitory effect of Kiss-1 on colorectal cancer cells may not solely combine with Kiss-1R, but with other unknown receptors. Navenot *et al.* reported Kiss-1/Kiss-1R also influenced signaling events by interacting with the chemokine receptor (CXCR4) and the gonadotrophin-releasing hormone receptor [17]. Kiss-1R knockdown has little effect on cell migration compared with the control cells which may support this hypothesis. Finally, a recent report has shown that the reduction/loss of Kiss-1 in colorectal cancer may be the result of hypermethylation of Kiss-1, and this provides a plausible explanation for the reduction of Kiss-1 observed in the current study [18]. It will be interesting to explore the mechanisms by which Kiss-1R is reduced/lost in this cancer type in the future.

Data obtained from the present study suggests that Kiss-1 significantly inhibits the motility and invasion of HT115 and HRT18 colorectal cancer cells, but has no significant effect on the proliferation and adhesion of HT115 and HRT18 cells. Interestingly, no increase in cell migration of Kiss-1R knockdown cells compared with the controls was observed. The motility of Kiss-1R knockdown cells would increase the same as the Kiss-1 knockdown cells did, if Kiss-1 indeed had the inhibitory influence on cell migration through Kiss-1R.

Several studies have suggested the mechanism by which Kiss-1 inhibits metastasis may involve extracellular-regulated kinase 1/2 (ERK1/2) phosphorylation and decreased matrix metalloproteinase-2 (MMP-2) expression [11,19,20]. In addition, Yan *et al.* reported Kisspeptin-10/Kiss-1R activation can dephosphorylate nuclear factor kappa B (NF-Kappa B), and cause it to dissociate from the MMP-9 promoter. This process ultimately results in a

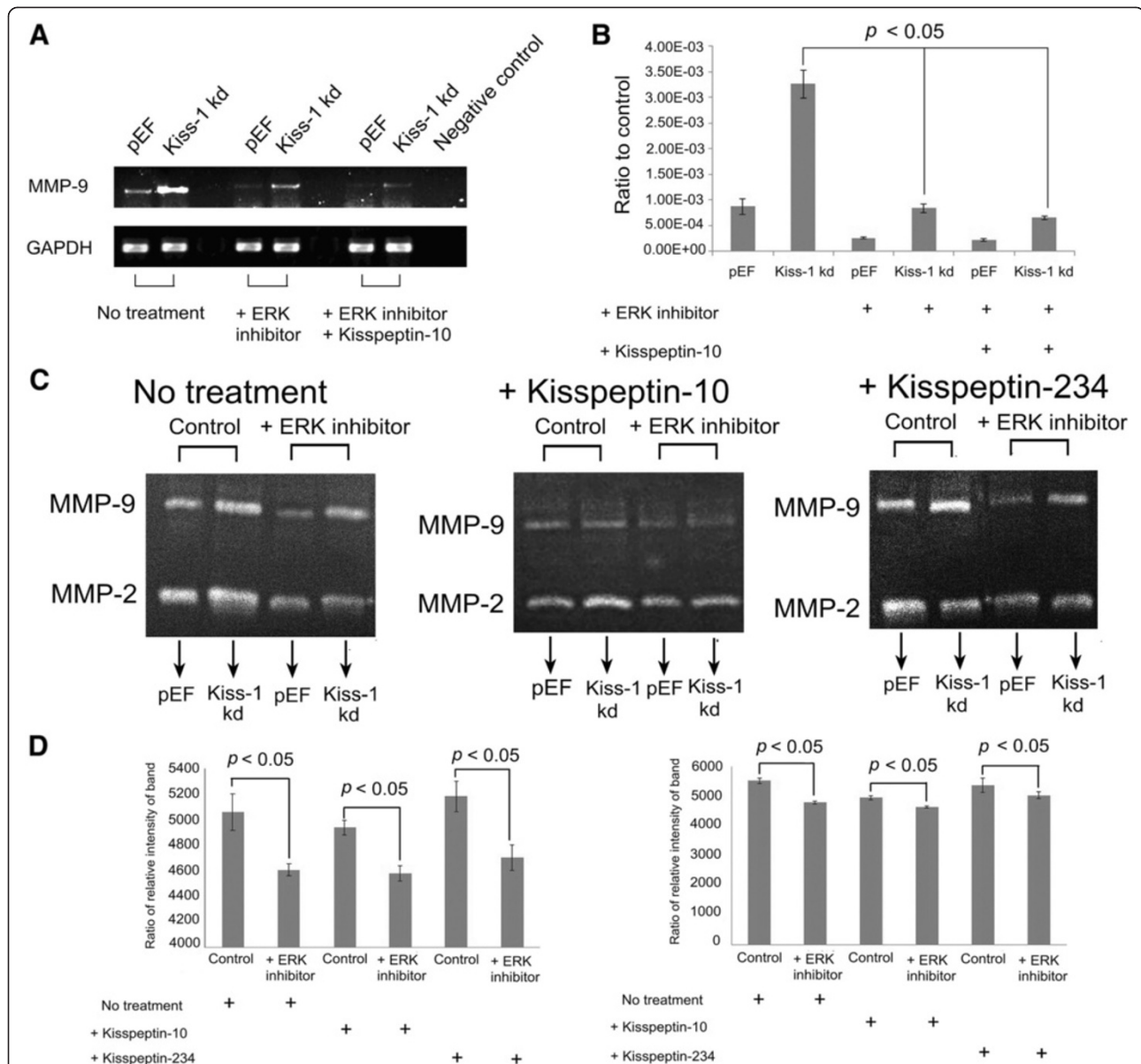


Figure 5 Kiss-1 expression had a significant impact on MMP-9. **A** and **B**. The overall MMP-9 gene expression was increased in HT115 Kiss-1 knockdown cells as shown by RT-PCR (**A**) and by real-time quantitative PCR (**B**). **C**. The enzyme activity of MMP-9 and MMP-2 in HT115 pEF and HT115 Kiss-1 knockdown cells, following treatment (no treatment, Kisspeptin-10 and Kisspeptin-234). (cells + ERK inhibitor vs control in the group of no treatment: $p = 0.006577$; cells + ERK inhibitor vs control in the group of Kisspeptin-10: $p = 0.001839$; cells + ERK inhibitor vs control in the group of Kisspeptin-234: $p = 0.005935$). **D**. The difference between MMP-9 enzyme activity in three groups of HT115 pEF cells (left) and HT115 Kiss-1 knockdown cells (right). + represents for corresponding treatment. Experiment was repeated three times and mean value taken.

decrease of MMP-9 expression in the placenta [21]. It will indeed be very interesting to examine the degradation of NF-Kappa B in response to Kiss-1 signalling in future studies. As a contribution to this endeavor, we have examined the effects of Kisspeptin-10 and ERK inhibitor on the migration ability of HT115 cells using ECIS assays, and found it to suppress the migration of colorectal cancer cells. Addition of ERK inhibitor can diminish the effect of Kisspeptin-10, suggesting the ERK pathway

plays an important role in mediating the signaling of Kiss-1/Kiss-1R.

Kiss-1 significantly inhibits the motility and invasion of HT115 cells. It is clear this action is at least partly mediated by regulating the activity of MMP-9. This study further indicates that the effect on MMP-9 is via the ERK pathway rather than the JNK pathway. In summary, it is suggested Kiss-1 inhibits ERK activation and consequently reduces the enzymatic activity of MMP-9 caused by the

degradation of NF- κ B, which contributes to the suppression of tumour metastasis.

Perhaps the most intriguing property of Kiss-1 is its potential to be exploited clinically. In the future we are interested in investigating the influence of Kisspeptin-10 on tumour growth and metastasis in an *in vivo* tumour model. Furthermore, Ziegler *et al.* reported that anti-proliferative function of Kisspeptin-10 was regulated by the expression levels of Kiss-1R [22]. There was no effect on proliferation observed in the breast cancer cells expressing Kiss-1R endogenously, while Kisspeptin-10 caused a significant inhibition of proliferation of transfected neuronal cells over-expressing Kiss-1R [22]. Hence, detecting the influence of Kisspeptin-10 on colorectal cancer through changing Kiss-1R's expression levels will be the focus of follow-up studies.

In conclusion, the present study has presented evidence that Kiss-1 is a putative metastasis suppressor molecule in human colorectal cancer. This is seen by its inhibitory effect on the migration and invasion of colorectal cancer cells, and on actions achieved by down-regulating the activities of MMP9, via an ERK dependent pathway. The preliminary data from studies on a clinical cohort of colorectal cancer patients support this argument.

Competing interests

The authors declare that they have no competing interests.

Authors' contributions

KJ and LY carried out the expression analysis, cell and molecular based work and data analyses. FR carried out immunohistochemical and histological analyses. RH participated in sample collection and patient followup. MDM participated in study design. WGJ participated in expression analysis, gene knockdown design and data analyses. All participated in manuscript preparation and approved the final manuscript.

Acknowledgments

The authors would thank the support from Cancer Research Wales and the Albert Hung Foundation.

Author details

¹Cardiff University-Peking University Joint Oncology Institute, Metastasis & Angiogenesis Research Group, Cardiff University School of Medicine, Cardiff CF14 4XN, UK. ²Section of Oncology & Palliative Medicine, Cardiff University School of Medicine Velindre Hospital, Cardiff CF14 2TL, UK.

Received: 2 June 2014 Accepted: 19 September 2014

Published: 27 September 2014

References

1. Parkin DM, Bray F, Ferlay J, Pisani P: **Global cancer statistics, 2002.** *CA Cancer J Clin* 2005, **55**(2):74–108.
2. Welch DR, Chen P, Miele ME, McGary CT, Bower JM, Stanbridge EJ, Weissman BE: **Microcell-mediated transfer of chromosome 6 into metastatic human C8161 melanoma cells suppresses metastasis but does not inhibit tumorigenicity.** *Oncogene* 1994, **9**(1):255–262.
3. Bilban M, Ghaffari-Tabrizi N, Hintermann E, Bauer S, Molzer S, Zoratti C, Malli R, Sharabi A, Hiden U, Graier W, Knofler M, Andreea F, Wagner O, Quaranta V, Desoye G: **Kisspeptin-10, a KiSS-1/metastin-derived decapeptide, is a physiological invasion inhibitor of primary human trophoblasts.** *J Cell Sci* 2004, **117**(Pt 8):1319–1328.
4. Kotani M, Dethoux M, Vandenbogaerde A, Communi D, Vanderwinden JM, Le Poul E, Brezillon S, Tyldesley R, Suarez-Huerta N, Vandeput F, Blanpain C, Schifmann SN, Vassart G, Parmentier M: **The metastasis suppressor gene**

5. **KiSS-1 encodes kisspeptins, the natural ligands of the orphan G protein-coupled receptor GPR54.** *J Biol Chem* 2001, **276**(37):34631–34636.
6. Ohtaki T, Shintani Y, Honda S, Matsumoto H, Hori A, Kanehashi K, Terao Y, Kumano S, Takatsu Y, Masuda Y, Ishibashi Y, Watanabe T, Asada M, Yamada T, Suenaga M, Kitada C, Usuki S, Kurokawa T, Onda H, Nishimura O, Fujino M: **Metastasis suppressor gene KiSS-1 encodes peptide ligand of a G-protein-coupled receptor.** *Nature* 2001, **411**(6837):613–617.
7. Lee DK, Nguyen T, O'Neill GP, Cheng R, Liu Y, Howard AD, Coulombe N, Tan CP, Tang-Nguyen AT, George SR, O'Dowd BF: **Discovery of a receptor related to the galanin receptors.** *FEBS Lett* 1999, **446**(1):103–107.
8. Sanchez-Carbayo M, Capodieci P, Cordon-Cardo C: **Tumor suppressor role of KiSS-1 in bladder cancer: loss of KiSS-1 expression is associated with bladder cancer progression and clinical outcome.** *Am J Pathol* 2003, **162**(2):609–617.
9. Wang H, Jones J, Turner T, He QP, Hardy S, Grizzle WE, Welch DR, Yates C: **Clinical and biological significance of KiSS1 expression in prostate cancer.** *Am J Pathol* 2012, **180**(3):1170–1178.
10. Dhar DK, Naora H, Kubota H, Maruyama R, Yoshimura H, Tomomoto Y, Tachibana M, Ono T, Otani H, Nagasue N: **Downregulation of KiSS-1 expression is responsible for tumor invasion and worse prognosis in gastric carcinoma.** *Int J Cancer* 2004, **111**(6):868–872.
11. Ikeguchi M, Yamaguchi K, Kaibara N: **Clinical significance of the loss of KiSS-1 and orphan G-protein-coupled receptor (hOT7T175) gene expression in esophageal squamous cell carcinoma.** *Clin Cancer Res* 2004, **10**(4):1379–1383.
12. Masui T, Doi R, Mori T, Toyoda E, Koizumi M, Kami K, Ito D, Peiper SC, Broach JR, Oishi S, Niida A, Fujii N, Imamura M: **Metastin and its variant forms suppress migration of pancreatic cancer cells.** *Biochem Biophys Res Commun* 2004, **315**(1):85–92.
13. Nomura H, Sato H, Seiki M, Mai M, Okada Y: **Expression of membrane-type matrix metalloproteinase in human gastric carcinomas.** *Cancer Res* 1995, **55**(15):3263–3266.
14. Olbrich T, Ziegler E, Turk G, Schubert A, Emons G, Grundker C: **Kisspeptin-10 inhibits bone-directed migration of GPR54-positive breast cancer cells: evidence for a dose-window effect.** *Gynecol Oncol* 2010, **119**(3):571–578.
15. Zuker M: **Mfold web server for nucleic acid folding and hybridization prediction.** *Nucleic Acids Res* 2003, **31**(13):3406–3415.
16. Jiang WG, Martin TA, Lewis-Russell JM, Douglas-Jones A, Ye L, Mansel RE: **Eplln-alpha expression in human breast cancer, the impact on cellular migration and clinical outcome.** *Mol Cancer* 2008, **7**:71.
17. Sun PH, Ye L, Mason MD, Jiang WG: **Protein tyrosine phosphatase micro (PTP micro or PTPRM), a negative regulator of proliferation and invasion of breast cancer cells, is associated with disease prognosis.** *PLoS One* 2012, **7**(11):e50183.
18. Navenot JM, Wang Z, Chopin M, Fujii N, Peiper SC: **Kisspeptin-10-induced signaling of GPR54 negatively regulates chemotactic responses mediated by CXCR4: a potential mechanism for the metastasis suppressor activity of kisspeptins.** *Cancer Res* 2005, **65**(22):10450–10456.
19. Moya P, Esteban S, Fernandez-Suarez A, Maestro M, Morente M, Sánchez-Carbayo M: **KiSS-1 methylation and protein expression patterns contribute to diagnostic and prognostic assessments in tissue specimens for colorectal cancer.** *Tumour Biol* 2013, **34**(1):471–479.
20. Ringel MD, Hardy E, Bernet VJ, Burch HB, Schuppert F, Burman KD, Saji M: **Metastin receptor is overexpressed in papillary thyroid cancer and activates MAP kinase in thyroid cancer cells.** *J Clin Endocrinol Metab* 2002, **87**(5):2399.
21. Yoshioka K, Ohno Y, Horiguchi Y, Ozu C, Namiki K, Tachibana M: **Effects of a KiSS-1 peptide, a metastasis suppressor gene, on the invasive ability of renal cell carcinoma cells through a modulation of a matrix metalloproteinase 2 expression.** *Life Sci* 2008, **83**(9–10):332–338.
22. Yan C, Wang H, Boyd DD: **KiSS-1 represses 92-kDa type IV collagenase expression by down-regulating NF-kappa B binding to the promoter as a consequence of Ikappa Balpha -induced block of p65/p50 nuclear translocation.** *J Biol Chem* 2001, **276**(2):1164–1172.
23. Ziegler E, Olbrich T, Emons G, Grundker C: **Antiproliferative effects of kisspeptin10 depend on artificial GPR54 (KiSS1R) expression levels.** *Oncol Rep* 2013, **29**(2):549–554.

doi:10.1186/1471-2407-14-723

Cite this article as: Ji et al.: Implication of metastasis suppressor gene, Kiss-1 and its receptor Kiss-1R in colorectal cancer. *BMC Cancer* 2014 **14**:723.