

RESEARCH ARTICLE

Open Access

Expression profile and prognostic role of sex hormone receptors in gastric cancer

Lu Gan^{1†}, Jian He^{1†}, Xia Zhang¹, Yong-Jie Zhang¹, Guan-Zhen Yu¹, Ying Chen², Jun Pan¹, Jie-Jun Wang^{1*} and Xi Wang^{1*}

Abstract

Background: Increasing interest has been devoted to the expression and possible role of sex hormone receptors in gastric cancer, but most of these findings are controversial. In the present study, the expression profile of sex hormone receptors in gastric cancer and their clinicopathological and prognostic value were determined in a large Chinese cohort.

Methods: The mRNA and protein expression of estrogen receptor alpha (ER α), estrogen receptor beta (ER β), progesterone receptor (PR), and androgen receptor (AR) in primary gastric tumors and corresponding adjacent normal tissues from 60 and 866 Chinese gastric cancer patients was detected by real-time quantitative PCR and immunohistochemistry method, respectively. The expression profile of the four receptors was compared and their associations with clinicopathological characteristics were assessed by using Chi-square test. The prognostic value of the four receptors in gastric cancer was evaluated by using univariate and multivariate Cox regression analysis.

Results: The presence of ER α , ER β , PR, and AR in both gastric tumors and normal tissues was confirmed but their expression levels were extremely low except for the predominance of ER β . The four receptors were expressed independently and showed a decreased expression pattern in gastric tumors compared to adjacent normal tissues. The positive expression of the four receptors all correlated with high tumor grade and intestinal type, and ER α and AR were also associated with early TNM stage and thereby a favorable outcome. However, ER α and AR were not independent prognostic factors for gastric cancer when multivariate survival analysis was performed.

Conclusions: Our findings indicate that the sex hormone receptors may be partly involved in gastric carcinogenesis but their clinicopathological and prognostic significance in gastric cancer appears to be limited.

Keywords: Gastric cancer, Estrogen receptor alpha, Estrogen receptor beta, Progesterone receptor, Androgen receptor, Prognosis

Background

Hormonal therapy is one of the major modalities of systemic treatment for hormone-dependent tumors such as breast cancer and prostate cancer [1,2]. The principle of hormonal therapy is that the sex hormones, estrogen or androgen, stimulate specific hormone-dependent cancer cells to grow and spread. Deprivation on the synthesis of such hormones or blocking the hormone signaling pathways can induce tumor recession. Particularly, it is well demonstrated that the hormone receptors are pivotal

targets for treatment of hormone-dependent tumors. Tamoxifen, an estrogen antagonist competitively binding to estrogen receptor (ER), has obtained great success in the treatment of ER-positive breast cancer in the past several decades [1-6]. The success of tamoxifen has prompted investigators to evaluate the possible role of hormone receptors in a variety of other tumors derived from “nontarget” organs and determine the possibility of hormonal therapy for these tumors, including gastric cancer [7,8].

Since 1983, a few of studies have examined the expression of ER in gastric cancer. However, considerable controversy is raised as to the expression level of ER and its prognostic value in gastric cancer [9-27]. More

* Correspondence: jiejunwang@gmail.com; d.wangxi@gmail.com

[†]Equal contributors

¹Department of Oncology, Changzheng Hospital, Second Military Medical University, Shanghai, China

Full list of author information is available at the end of the article

detailedly, a few studies show that ER alpha (ER α) is absent in gastric cancer but ER beta (ER β) is expressed in abundance, whereas others indicate that the two ER isoforms are both expressed [22-27]. Furthermore, some authors find ER expression is correlated with poor differentiation, advanced stage, and adverse outcome while others suggest the opposite [17,19,23,24,26,27]. Additionally, the roles of progesterone receptor (PR) and androgen receptor (AR) in gastric cancer are poorly defined [28]. In the present study, the expression profile of four sex hormone receptors, ER α , ER β , PR, and AR, was determined in gastric tumors and corresponding normal tissues from a large Chinese cohort, and their clinicopathological and prognostic value was assessed.

Methods

Patients and tissue samples

A total of 1072 patients underwent gastrectomy for histopathologically confirmed gastric carcinoma in Changhai Hospital, Second Military Medical University, Shanghai, China, from 2000 through 2005. Patients without sufficient tissue samples or necessary clinicopathological information, or patients suffered from double primary tumors or remnant gastric cancer, or those died within two months of surgery, were all excluded and thus 866 eligible patients were enrolled. The patients were followed up every 6 months until death or study end (March 30 2010), except for those lost to follow-up. The tumor tissues and their adjacent normal tissues from these patients were routinely fixed in 10% buffered formalin and blocked in paraffin, ready to tissue microarray construction. In addition, 60 pairs of fresh gastric tumors and their matched normal mucosa were obtained. The fresh tissue samples were prepared carefully within 15 min of excision, stabilized in RNAlater[®] solution (Ambion, Austin, TX, USA) at 4°C overnight and preserved at -20°C until RNA extraction. All patients enrolled were naïve for any anticancer therapy. All tissue specimens were obtained with patient informed consent, and the protocol was approved by Institutional Review Board of Second Military Medical University.

Total RNA preparation and reverse transcription

Total RNA was extracted from the RNAlater[®]-stabilized tissue samples using an RNAqueous[®]-4PCR kit (Cat# AM1914, Ambion, Austin, TX, USA) according to the manufacturer's protocol. Complementary DNA (cDNA) was synthesized from total RNA with use of a High Capacity cDNA Reverse Transcription Kit (PN4374966, Applied Biosystems, Foster City, CA), according to the manufacturer's instructions. The reaction was incubated in an ABI 2720 Thermocycler (Applied Biosystems) for 10 min at 25°C, 120 min at 37°C, and 5 min at 85°C.

cDNA samples were stored at -20°C before real-time PCR amplification.

Real-time quantitative PCR

Real-time quantitative PCR was performed with an ABI PRISM[®] 7900HT Sequence Detection System (Applied Biosystems) using the Power SYBR[®] Green PCR Master Mix kit (PN4367659, Applied Biosystems) as described by the manufacturer. A total reaction volume of 50 μ l contained 5 μ l of cDNA template corresponding to 100 ng of total RNA, 25 μ l of 2 \times Power SYBR[®] Green PCR Master Mix, 1 μ l forward primer of 10 μ M, 1 μ l reverse primer of 10 μ M and 18 μ l ddH₂O. Negative controls included water instead of cDNA in the PCR reaction and addition of RNA instead of cDNA, and β -actin was used as an endogenous control. The primer sequences were as follows: ER α 5'-TCCTGATGAT TGGTCTCGTCT-3' (forward) and 5'-ACATTTTCCCT GGTTCCTGTC-3' (reverse), ER β 5'-AGTCTGGTCGT GTGAAGGATG-3' (forward) and 5'-ACTTCTCTGTC TCCGCACAAG-3' (reverse), PR 5'-ACACCTCCAGTT CTTTGCTGAC-3' (forward) and 5'-ATTCTTTCAT CCGCTGTTTCA-3' (reverse), AR 5'-ATTGTCCAT CTTGTCGTCTTCG-3' (forward) and 5'-AGCCTCTC CTTCTCTCTGTAGT-3' (reverse), and β -actin 5'-TGT TACAGGAAGTCCCTTGC-3' (forward) and 5'-AAGC AATGCTATCACCTCCC-3' (reverse). All primers were synthesized by Sangon Biotech Co. Ltd., Shanghai, China. The amplification was run at 95°C for 10 min followed by 40 cycles of 95°C for 15 sec and 60°C for 1 min. All samples were run in triplicate, and data were analyzed by use of the Sequence Detection System (SDS) Software Version 2.3 (Applied Biosystems). The specificity of amplification reaction was confirmed by analyzing the corresponding dissociation curves. The quantification of sex hormone receptors was normalized to β -actin expression using the $2^{-\Delta\Delta C_t}$ method.

Tissue microarray construction and immunohistochemistry

Tissue microarrays were constructed from formalin-fixed and paraffin-embedded archival tissue blocks using a tissue arrayer (Beecher Instruments, Silver Spring, MD) according to the previous description [29,30]. For each of 866 patients, duplicate gastric tumor cylinders and at least one matched adjacent normal mucosa cylinder with a diameter of 1.5 mm were arrayed and consecutive 4 μ m sections were cut. Immunohistochemistry assay for ER α , ER β , PR, and AR was performed using an UltraSensitive[™] SP kit (#9710, Maixin, Fuzhou, China) according to the manufacturer's instructions. Briefly, the tissue microarray sections were deparaffinized in xylene, rehydrated with graded ethanol, and subjected to antigen retrieval in citrate buffer (pH 6.0) in a high-pressure

cooker. The sections were subsequently blocked for endogenous peroxide activity with 3% hydrogen peroxide, treated with preimmune goat serum to block nonspecific binding sites, and then incubated with the primary mouse monoclonal antibodies against ER α (clone 33, ab2746, Abcam; 1:50), ER β (clone 14C8, ab288, Abcam; 1:100), PR (clone PR-AT 4.14, ab2764, Abcam; 1:100), and AR (clone AR 441, ab9474, Abcam; 1:200), respectively. After an overnight incubation at 4°C, the sections were washed and incubated with a secondary biotinylated anti-mouse/rabbit antibody. The immunostaining was visualized with a diaminobenzidine detection kit (DAB-0031, Maixin) and then the sections were counterstained with hematoxylin, dehydrated, cleared, and coverslipped. Human breast cancer tissue overexpressing ER α , ER β , and PR, and prostate cancer tissue overexpressing AR were used as positive controls. Sections incubated without primary antibody were also included in each staining experiment as negative controls.

Evaluation of immunostaining

Brown cytoplasmic and/or nuclear staining in the gastric cancer cells or adjacent normal epitheliums was considered to be positive. The signal was quantified by the Allred score system which represented the estimated intensity and proportion of positive-staining cells [31]. A score ≥ 3 was designated as positive expression and a score of 0 or 2 was regarded as negative. The immunostaining sections were viewed by two pathologists independently using an Olympus CX31 microscope (Olympus, Japan).

Statistical analysis

The expression difference of sex hormone receptors between gastric tumors and corresponding normal tissues was determined by the Wilcoxon matched-pairs signed-rank test or Chi-square test where appropriate. Correlations were computed using the Spearman rank test. The associations between expression of sex hormone receptors and clinicopathological characteristics were tested using Chi-square test. The probability of survival was estimated by Kaplan-Meier method and compared by log-rank test. The prognostic role of sex hormone receptors in gastric cancer was identified using univariate and multivariate Cox model. All *P* values were two-sided and less than 0.05 was considered statistically significant. Statistical analyses were performed by the SPSS 15.0 for windows (SPSS, Chicago, IL, USA).

Results

Expression profile of sex hormone receptors in gastric cancer

Real-time quantitative PCR showed that the mRNAs of ER α , ER β , PR and AR were all detected in all 60 pairs of

gastric tumors and their matched normal mucosa. Furthermore, the mRNA levels of the four receptors in gastric tumors were all significantly decreased compared to those in their matched normal mucosa (Figure 1).

Immunohistochemistry assay based on 866 Chinese patients further demonstrated the expression of ER α , ER β , PR and AR proteins. Unlike the typical nuclear expression in breast and prostate cancer tissues as positive controls (see Additional file 1: Figure S1), the four sex hormone receptors all presented a cytoplasmic/nuclear staining pattern (Figure 2). However, ER α , PR and AR immunostaining was mainly localized in the cytoplasm while ER β immunostaining was ubiquitously observed in the nucleus for both normal epithelium and gastric cancer cells (Figure 2). After exclusion of inevaluable cases due to tissue loss or inadequate tissue, the positive rates of ER α , ER β , PR and AR expression in normal tissues were 38.3%, 97.3%, 30.5%, and 52.7%, and the positive rates of the four receptors in gastric tumor were 12.0%, 91.9%, 23.3%, and 33.0%, respectively. The protein level of each receptor in gastric tumor was all significantly lower than that expressed in normal gastric mucosa ($P < 0.001$).

Correlations among expression of sex hormone receptors in gastric cancer

Table 1 shows the Spearman correlations among expression of the four sex hormone receptors on mRNA and protein levels. Strong correlations of mRNA expression between ER α and ER β , ER α and PR, and ER β and PR were revealed, while no significant correlations between AR and the other three receptors were detected. On protein level, significant correlations were observed in all pairwise comparison among immunostaining scores of the four receptors. However, these correlation coefficients were so small ($r < 0.4$) that only extremely weak correlations among the four receptors were found.

ER α and AR expression correlates with tumor grade, Lauren type, and TNM stage of gastric cancer

Possible associations of ER α , ER β , PR and AR expression with available clinicopathological characteristics of 866 gastric cancer patients are presented in Table 2. The protein expression of ER α and AR was closely associated with tumor grade, Lauren type, T classification, and N classification ($P < 0.001$), respectively, and consequently correlated with TNM stage ($P < 0.001$). Importantly, positive staining of ER α and AR was more frequently observed in patients with better differentiated tumors, intestinal type, and earlier TNM stage. Either for ER β or for PR, only correlations between the positivity and the tumor grade and Lauren type were noticed ($P < 0.05$). No significant associations were found

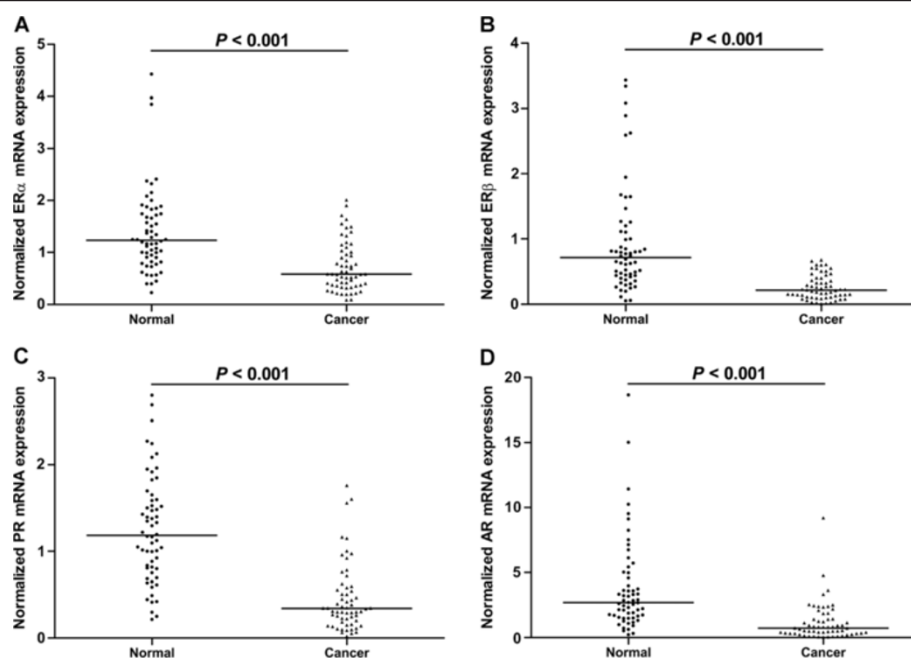


Figure 1 Scatter plots of (A) ER α , (B) ER β , (C) PR, and (D) AR mRNA levels in gastric tumors and corresponding adjacent normal mucosa ($n = 60$). The line indicates the median value. The mRNA levels were normalized to β -actin and statistical differences were determined using Wilcoxon matched-pairs signed-rank test.

between expression of ER β and PR and other clinicopathological characteristics.

ER α and AR expression correlates with favorable outcome in patients with gastric cancer

Table 3 reports the findings from univariate and multivariate survival analysis in gastric cancer. Univariate analysis showed that the significant prognostic factors included age, tumor size, tumor grade, Lauren type, T classification, N classification, radical resection, TNM stage, ER α expression, and AR expression. For ER α -positive patients, the 5-year survival rate and median survival were 71.3% (95% CI, 62.5%-80.1%) and 81.5 months (range, 4–121 months), compared with 50.7% (95% CI, 47.0%-54.4%) and 43.0 months (range, 2–123 months) for ER α -negative patients, respectively. ER α -positive patients had a significantly better outcome than ER α -negative patients ($P < 0.001$; Figure 3A). The expression of ER β and PR was not associated with the prognosis of gastric cancer patients ($P = 0.568$ for ER β and $P = 0.385$ for PR; Figure 3B and 3C). For patients with AR-positive tumors, the 5-year survival rate was 59.4% (95%, 53.5%-65.3%) with a median survival of 71.0 months (range, 2–123 months), which took significant advantage over a 5-year survival rate of 49.7% (95% CI, 45.6%-53.8%) with a median survival of 40.0 months (range, 2–123 months) for patients with AR-negative tumors ($P = 0.028$; Figure 3D). However, only age, tumor size, T classification, N classification, and radical

resection were retained in the multivariate Cox model, as shown in Table 3. The expression of ER α and AR were not independent prognostic factors for gastric cancer.

Discussion

In the present study, the expression profile and prognostic role of ER α , ER β , PR, and AR in gastric cancer was determined in a large Chinese cohort. Our results showed that the four receptors were all expressed with decreased abundance in gastric tumors compared to adjacent normal tissues. All the four receptors were associated with high tumor grade and intestinal type, and the positive expression of ER α and AR also correlated with early TNM stage and thereby a favorable outcome.

Our findings are inconsistent with a few previous publications in which ER α , PR and AR were proposed as adverse factors whereas ER β was deemed beneficial for gastric cancer patients [19,26-28]. Factually, substantial disagreement has been observed for several decades with regard to the expression and role of sex hormone receptors in gastric cancer. The conflicting findings may be partly attributed to heterogeneity in experimental methods, positivity criteria, sample size, and patient ethnicity. In particular, by various methods, the expression levels of sex hormone receptors even their presence, varies in a large range in gastric cancer. Furthermore, most of these investigations usually suffer from very small sample size and as a result, the conclusions on clinicopathological significance of sex hormone receptors in

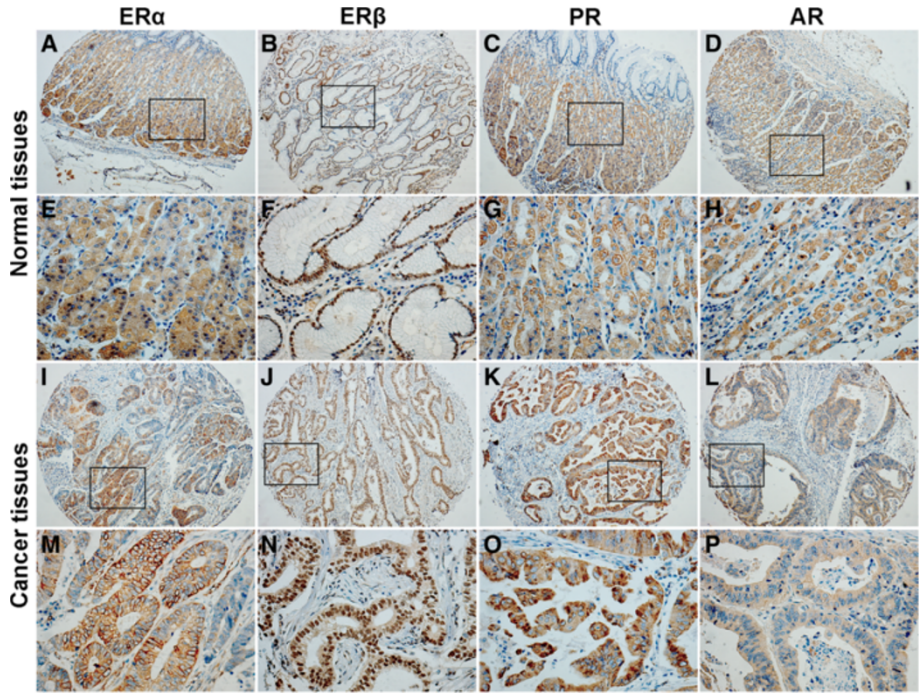


Figure 2 Representative immunostaining of sex hormone receptors in gastric tumors and corresponding adjacent normal tissues. Positive staining of (A, E) ERα, (B, F) ERβ, (C, G) PR, and (D, H) AR in normal tissues, and positive staining of (I, M) ERα, (J, N) ERβ, (K, O) PR, and (L, P) AR in gastric tumors is shown. Original magnification, ×100 for (A) through (D) and (I) through (L); ×400 for (E) through (H) and (M) through (P).

gastric cancer are often contradictory. Additionally, the failure to distinguish ERβ from ERα in earlier reports also contributes to conflicting results for ER.

To minimize the above-mentioned limitations, in this study, the expression of the four receptors was detected simultaneously at both mRNA and protein levels. More importantly, a set of tissue microarray containing tumors and corresponding normal tissues from 866 Chinese patients was employed. The largest sample size to date and the high uniformity of experimental conditions profiting from tissue microarray made our results more reliable and convincing.

Table 1 Correlations among expression of sex hormone receptors in gastric cancer

Correlation	mRNA expression		Protein expression	
	r	P†	r	P†
ERα vs ERβ	0.795	<0.001	0.136	<0.001
ERα vs PR	0.756	<0.001	0.083	0.016
ERα vs AR	0.328	0.437	0.171	<0.001
ERβ vs PR	0.714	<0.001	0.132	<0.001
ERβ vs AR	0.492	0.231	0.329	<0.001
PR vs AR	0.186	0.734	0.098	0.005

ERα, estrogen receptor alpha; ERβ, estrogen receptor beta; PR, progesterone receptor; AR, androgen receptor; r, Spearman rank correlation coefficients.
†Spearman rank correlation test.

Owing to the well establishment in breast cancer, ERs also are the best-studied sex hormone receptors in gastric cancer. Using a semi-quantitative RT-PCR, ERβ has shown a more preferential expression pattern than ERα in both gastric tumors and normal mucosa. Compared to the expression in normal gastric mucosa, ERα tends to increase in tumor tissues while ERβ declines [23,24]. With a real-time quantitative PCR, the presence of ERα and ERβ mRNA in all tumors and normal mucosa samples was demonstrated in our study. Moreover, the significant decrease of both ERα and ERβ mRNAs in tumors compared to in normal tissues was indicated, similar to the findings in another study from China [26].

Various expression patterns of ERα and ERβ proteins have been observed by several investigations. By IHC, a few studies have found no or sporadic staining of ERα in gastric tumors even in matched normal tissues, while strong ERβ staining in both cancer and their non-cancerous tissues [22,24,27,28]. Our results are not quite similar to these findings. ERα protein is indeed expressed in both normal mucosa (38.3%) and gastric tumors (12.0%) but with a very weak pattern, while ERβ protein is the predominant isoform of ER in both normal (97.3%) and cancerous (91.9%) tissues. Both ERα and ERβ proteins present a decreased expression pattern in gastric tumors compared to their corresponding normal tissues [26].

Table 2 Association between expression of sex hormone receptors and clinicopathological characteristics in gastric cancer

Variable	Total patients (n = 866)	Evaluable patients†							
		ERα (n = 848)		ERβ (n = 823)		PR (n = 851)		AR (n = 843)	
		Positive No. (%)	P‡	Positive No. (%)	P‡	Positive No. (%)	P‡	Positive No. (%)	P‡
Sex			0.496		0.166		0.522		0.313
Female	261	29 (10.9)		221 (89.8)		58 (21.9)		81 (30.6)	
Male	605	73 (12.5)		535 (92.7)		140 (23.9)		197 (34.1)	
Age, years			0.837		0.187		0.523		0.254
≤40	70	6 (8.8)		57 (87.7)		12 (17.6)		16 (24.2)	
≤50	148	19 (13.2)		126 (93.3)		30 (20.7)		46 (32.2)	
≤65	328	39 (12.0)		283 (90.1)		79 (24.5)		102 (31.9)	
>65	320	38 (12.2)		290 (93.9)		77 (24.4)		114 (36.3)	
Tumor site§			0.839		0.700		0.433		0.605
Upper	138	19 (13.8)		123 (91.8)		25 (18.2)		52 (38.0)	
Middle	263	30 (11.8)		224 (90.3)		63 (24.3)		81 (31.9)	
Lower	416	46 (11.3)		368 (92.9)		100 (24.6)		129 (32.0)	
Diffuse	49	7 (14.3)		41 (91.1)		10 (20.4)		16 (32.7)	
Tumor size, cm			0.166		0.316		0.425		0.127
≤2	133	22 (17.1)		117 (95.9)		28 (22.0)		52 (42.3)	
≤3	160	21 (13.7)		134 (89.9)		29 (18.6)		50 (32.3)	
≤5	273	30 (11.1)		243 (91.7)		67 (24.7)		84 (31.3)	
>5	300	29 (9.8)		262 (91.3)		74 (24.9)		92 (31.0)	
Tumor grade			<0.001		0.030		0.001		<0.001
Well	48	15 (31.9)		53 (96.4)		19 (40.4)		22 (48.9)	
Moderate	286	47 (16.5)		274 (94.5)		77 (27.1)		127 (44.9)	
Poor	532	40 (7.8)		429 (89.7)		102 (19.6)		129 (25.0)	
Lauren type			0.012		0.010		0.017		<0.001
Intestinal	535	76 (14.4)		481 (93.0)		139 (26.3)		197 (37.6)	
Diffuse	297	21 (7.4)		250 (91.2)		55 (19.0)		68 (23.9)	
Mixed	34	5 (14.7)		25 (78.1)		4 (11.8)		13 (38.2)	
T classification¶			<0.001		0.195		0.818		<0.001
pT1	132	33 (26.0)		114 (95.0)		28 (21.7)		61 (48.8)	
pT2	142	19 (13.9)		125 (94.7)		36 (26.3)		49 (36.6)	
pT3	528	44 (8.4)		463 (90.8)		120 (23.0)		147 (28.2)	
pT4	64	6 (9.7)		54 (88.5)		14 (22.2)		21 (33.9)	
N classification¶			<0.001		0.574		0.340		0.001
pN0	309	67 (22.3)		272 (93.2)		76 (25.0)		125 (41.9)	
pN1	314	20 (6.5)		275 (90.2)		63 (20.7)		85 (28.0)	
pN2	191	13 (6.9)		165 (92.7)		43 (22.6)		52 (27.4)	
pN3	52	2 (3.9)		44 (91.7)		16 (30.8)		16 (31.4)	
TNM stage¶			<0.001		0.173		0.535		<0.001
I	187	44 (24.4)		165 (95.4)		48 (26.2)		85 (47.8)	
II	158	21 (13.5)		138 (90.8)		39 (25.3)		53 (35.1)	
III	294	23 (8.0)		253 (89.7)		61 (21.0)		74 (25.3)	
IV	227	14 (6.3)		200 (92.6)		50 (22.3)		66 (29.7)	

ERα, estrogen receptor alpha; ERβ, estrogen receptor beta; PR, progesterone receptor; AR, androgen receptor. †Total patients except for inevaluable cases due to tissue loss or inadequate tissue in immunohistochemistry assay. ‡Chi-square test. §Japanese Classification of Gastric Carcinoma (3rd English edition) proposed by the Japanese Gastric Cancer Association (JGCA). ¶The 6th TNM Classification of Malignant Tumors proposed by the AJCC/UICC.

Table 3 Univariate and multivariate analysis of overall survival by Cox model in gastric cancer

Variable	Univariate cox			Multivariate cox		
	HR	95% CI	P	HR	95% CI	P
Sex: female vs male	0.896	0.728-1.103	0.302			
Age, years: ≤40 vs ≤50 vs ≤65 vs >65	1.262	1.127-1.412	<0.001	1.226	1.089-1.379	0.001
Tumor site: upper vs middle vs lower vs diffuse†	0.998	0.883-1.128	0.976			
Tumor size, cm: ≤2 vs ≤3 vs ≤5 vs >5	1.590	1.434-1.764	<0.001	1.149	1.023-1.291	0.019
Tumor grade: well vs moderate vs poor	1.540	1.287-1.841	<0.001	1.191	0.959-1.481	0.114
Lauren type: intestinal vs diffuse vs mixed	1.202	1.020-1.415	0.028	1.143	0.945-1.383	0.167
T classification: pT1 vs pT2 vs pT3 vs pT4‡	2.135	1.859-2.451	<0.001	1.490	1.263-1.757	<0.001
N classification: pN0 vs pN1 vs pN2 vs pN3‡	2.237	2.017-2.481	<0.001	1.733	1.543-1.947	<0.001
Radical resection: yes vs no	3.337	2.706-4.114	<0.001	2.053	1.641-2.570	<0.001
TNM stage: I vs II vs III vs IV§	2.306	2.064-2.576	<0.001			
ERα: positive vs negative	1.990	1.380-2.871	<0.001	1.159	0.797-1.685	0.441
ERβ: positive vs negative	1.107	0.779-1.573	0.572			
PR: positive vs negative	0.905	0.723-1.135	0.389			
AR: positive vs negative	1.265	1.023-1.564	0.030	1.072	0.858-1.340	0.541

HR, hazard ratio; CI, confidence interval; ERα, estrogen receptor alpha; ERβ, estrogen receptor beta; PR, progesterone receptor; AR, androgen receptor. †Japanese Classification of Gastric Carcinoma (3rd English edition) proposed by the Japanese Gastric Cancer Association (JGCA). ‡The 6th TNM Classification of Malignant Tumors proposed by the AJCC/UICC. §TNM stage was not included into multivariate Cox model to avoid repetition with T and N classifications.

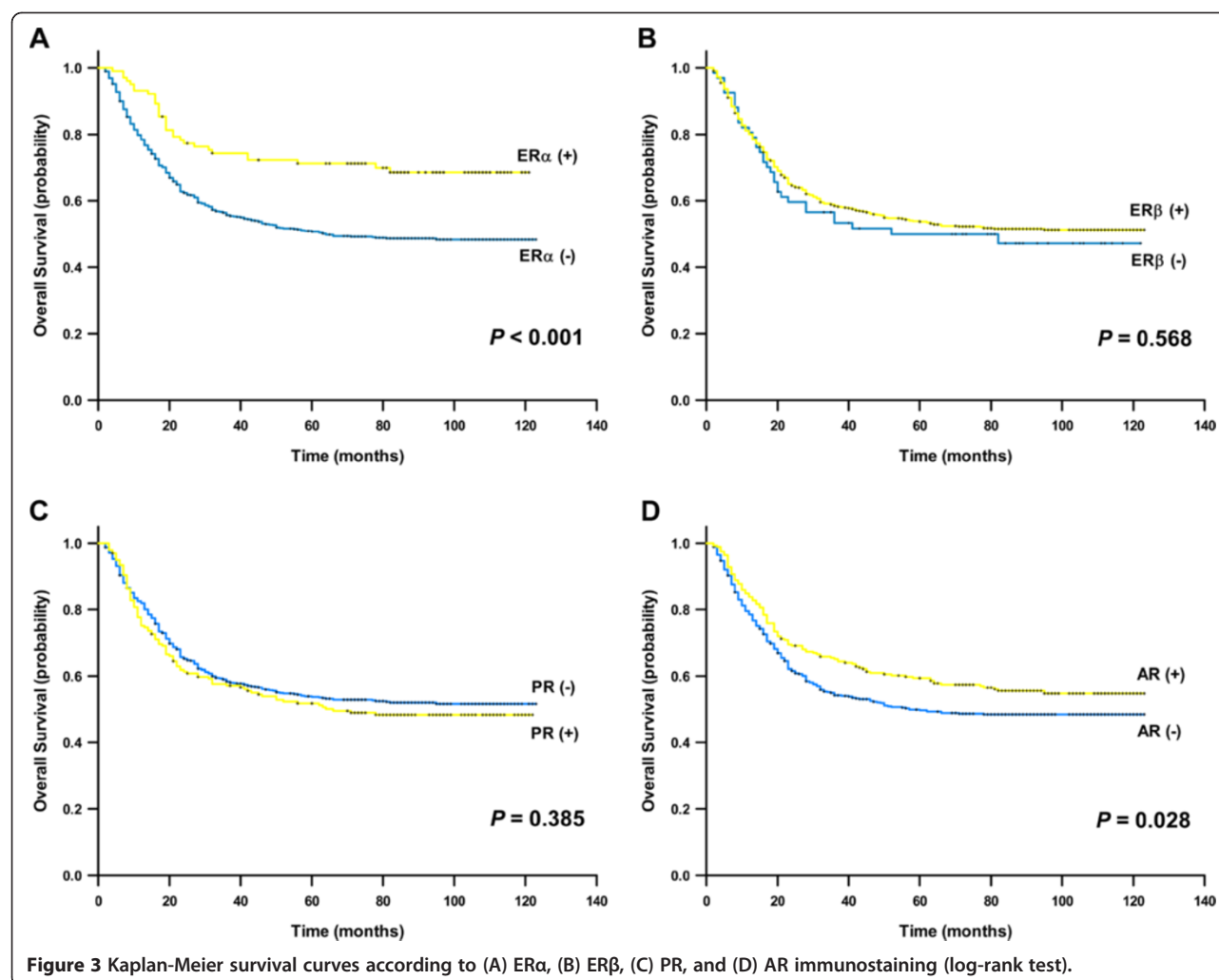
The presence of PR is detected in gastric cancer as early as ER, and the positive expression of PR ranges from none to all [9,10,12-21]. As far as AR is concerned, very little attention has been paid to AR in gastric cancer. Following the first detection of AR in 2 of 16 gastric cancer patients, a positive rate of 17.4% for AR nuclear staining in an immunohistochemical study of 86 cases was indicated [12,28]. In the present study, our results show a positive rate of 30.5% in normal mucosa and 23.3% in gastric tumors for PR, and 52.7% in normal tissues and 33.0% in tumors for AR.

When the localization of the four sex hormone receptors is concerned, a few earlier studies have revealed that they were solely expressed in the nuclei of gastric cancer cells [22,28]. However, a few recent studies also reported a cytoplasmic staining of ERα and a cytoplasmic/nuclear staining of ERβ in gastric cancer [26,27]. In the present study, unlike the typical nuclear expression in breast and prostate cancer tissues as positive controls (see Additional file 1: Figure S1), the four sex hormone receptors all presented a cytoplasmic/nuclear staining pattern (Figure 2). Particularly, ERα, PR and AR immunostaining was mainly localized in the cytoplasm while ERβ immunostaining was mostly detected in the nuclei.

Although our findings provided added information to the localization of sex hormone receptors in gastric cancer, agreement on the immunostaining location could not be finalized yet. Factually, the immunostaining location might be affected by the characteristics of antibody to some extent. In particular, different antibodies

obtained from various clones usually result in inconsistent findings. For example, a sole nuclear immunostaining of ERα was observed with a mouse monoclonal antibody (clone ER88) [28] while a cytoplasmic expression pattern of ERα was detected with another mouse monoclonal antibody (clone 1D5) [26]. For ERβ, a sole nuclear expression was noticed with the use of a mouse monoclonal antibody (clone 14C8) [26] while with another mouse monoclonal antibody (clone PPG5/10), a cytoplasmic/nuclear expression was identified [27]. Therefore, it would be ideal to examine the immunostaining of the four sex hormone receptors synchronously by using a wide panel of antibodies obtained from various clones as many as possible. In the present study, only a single antibody for each receptor was used and the absence of other antibodies produced from various clones was the main limitation.

Nevertheless, based on the currently available evidence, the nuclear and cytoplasmic immunostaining patterns might indicate two different functional forms of sex hormone receptors in gastric cancer which were presumed to be dependent on the specific status of cancer cells. Seeing that the cytoplasmic expression of ERα and ERβ has also been observed in non-small cell lung cancer [32,33], the cytoplasmic expression of sex hormone receptors in these tumors derived from “nontarget” organs might suggest an independent or a novel mechanism involving in tumorigenesis distinct from the genomic signaling via nuclear forms typically occurred in breast cancer [33]. Certainly, more studies by use of



novel antibody technology and special experimental techniques are warranted to carefully verify all of these assumptions in the future.

The associations between sex hormone receptors and clinicopathological factors of gastric tumors have been studied extensively. One of the most concerns is the expression difference of sex hormone receptors in both genders which might be a possible interpretation of male predominance among gastric cancer patients [34]. However, no significant difference is found between male and female patients in this study though slight higher positive rates in male patients are observed (Table 2), which suggested that the sex difference of gastric cancer incidence cannot attributed to sex hormone receptors at least.

In this study, the expression of four hormone receptors is all closely associated with tumor grade and Lauren type. Moreover, the positive immunostaining always indicates a high tumor differentiation and intestinal type (Table 2), and the positive rates of the four receptors in

normal tissues are always significantly higher than that in corresponding tumors. Given sex hormone receptors are critical effectors of normal cell growth and differentiation, it is logical to assume that these receptors are also involved in the physiological maintenance of differentiation and function of gastric mucosa [35]. Together with the findings that sex hormone-receptor-negative tumors have a higher proliferative activity than sex hormone-receptor-positive tumors in human gastrointestinal tract adenocarcinomas [16], the abnormal expression or function of these receptors may be implicated in the pathogenesis of gastric cancer to some extent [5-7].

Besides tumor grade and Lauren type, the positivity of ER α and AR proteins also negatively correlates with advanced T and N classifications, and thereby correlates with an early TNM stage significantly (Table 2). Just as we expected, positive expression of ER α and AR correlates with favorable outcome for gastric cancer patients though they are not independent prognostic factors (Table 3). When ER β and PR are concerned, no

significant correlations are found between their expression and any clinicopathological characteristics except for tumor grade and Lauren type. Under this circumstance, the prognostic importance of ER β and PR in gastric cancer is weak. In fact, so do our findings in the present study.

Conclusion

Our results confirmed the presence of ER α , ER β , PR, and AR in both gastric tumors and normal mucosa but their expression levels were extremely low except for the predominance of ER β . The decreased expression pattern of the four receptors in gastric tumors and their associations with clinicopathological characteristics as well as overall survival indicate that the sex hormone receptors may be partly involved in gastric carcinogenesis. Together with the independent expression of the four receptors (Table 1) and the failure of hormone therapy for gastric cancer [36], the function and significance of sex hormone receptors in gastric cancer appears to be limited.

Additional file

Additional file 1: Figure S1. Typical nuclear immunostaining of sex hormone receptors in breast and prostate cancer tissues as positive controls. Positive nuclear staining of (A) ER α , (B) ER β , and (C) PR in breast cancer tissues, and positive nuclear staining of (D) AR in prostate cancer tissue is shown. Original magnification, $\times 400$.

Competing interests

The authors declare that they have no competing interests.

Authors' contributions

LG and JH performed experimental procedures, analyzed the data and drafted the manuscript. XZ, YJZ, GZY, YC, and JP performed experimental procedures, analyzed the data and reviewed the manuscript. JJW and XW designed the study, analyzed the data and drafted the manuscript. All authors read and approved the final manuscript.

Acknowledgments

This work was supported in part by Grant No. 2006BAI02A05 from the National Key Technology R&D Program of China and Grants No. 30973432 and 81000983 from the National Natural Science Foundation of China.

Author details

¹Department of Oncology, Changzheng Hospital, Second Military Medical University, Shanghai, China. ²Department of Pathology, Changhai Hospital, Second Military Medical University, Shanghai, China.

Received: 8 August 2012 Accepted: 28 November 2012

Published: 2 December 2012

References

- Hurvitz SA, Pietras RJ: Rational management of endocrine resistance in breast cancer: a comprehensive review of estrogen receptor biology, treatment options, and future directions. *Cancer* 2008, **113**:2385–2397.
- Ramirez ML, Keane TE, Evans CP: Managing prostate cancer: the role of hormone therapy. *Can J Urol* 2007, **14**(Suppl 1):10–18.
- Hayashi S, Yamaguchi Y: Estrogen signaling pathway and hormonal therapy. *Breast Cancer* 2008, **15**:256–261.
- Osborne CK, Schiff R: Mechanisms of endocrine resistance in breast cancer. *Annu Rev Med* 2011, **62**:233–247.
- Thomas C, Gustafsson JÅ: The different roles of ER subtypes in cancer biology and therapy. *Nat Rev Cancer* 2011, **11**:597–608.
- Chen GG, Zeng Q, Tse GM: Estrogen and its receptors in cancer. *Med Res Rev* 2008, **28**:954–974.
- Ahmad N, Kumar R: Steroid hormone receptors in cancer development: a target for cancer therapeutics. *Cancer Lett* 2011, **300**:1–9.
- Wu CW, Lui WY, Peng FK, Chi CW: Hormonal therapy for stomach cancer. *Med Hypotheses* 1992, **39**:137–139.
- Tokunaga A, Kojima N, Andoh T, Matsukura N, Yoshiyasu M, Tanaka N, Ohkawa K, Shirota A, Asano G, Hayashi K: Hormone receptors in gastric cancer. *Eur J Cancer Clin Oncol* 1983, **19**:687–689.
- Tokunaga A, Nishi K, Matsukura N, Tanaka N, Onda M, Shirota A, Asano G, Hayashi K: Estrogen and progesterone receptors in gastric cancer. *Cancer* 1986, **57**:1376–1379.
- Yokozaki H, Takekura N, Takanashi A, Tabuchi J, Haruta R, Tahara E: Estrogen receptors in gastric adenocarcinoma: a retrospective immunohistochemical analysis. *Virchows Arch A Pathol Anat Histopathol* 1988, **413**:297–302.
- Wu CW, Chi CW, Chang TJ, Lui WY, Peng FK: Sex hormone receptors in gastric cancer. *Cancer* 1990, **65**:1396–1400.
- Sica V, Nola E, Contieri E, Bova R, Masucci MT, Medici N, Petrillo A, Weisz A, Molinari AM, Puca GA: Estradiol and progesterone receptors in malignant gastrointestinal tumors. *Cancer Res* 1984, **44**:4670–4674.
- Oshima CT, Wonraht DR, Catarino RM, Mattos D, Forones NM: Estrogen and progesterone receptors in gastric and colorectal cancer. *Hepatogastroenterology* 1999, **46**:3155–3158.
- Wu CW, Chang HM, Kao HL, Lui WY, Peng FK, Chi CW: The nontransformed progesterone and estrogen receptors in gastric cancer. *Gastroenterology* 1992, **102**:1639–1646.
- Korenaga D, Orita H, Okuyama T, Kinoshita J, Maekawa S, Ikeda T, Sugimachi K: Sex hormone-receptor-negative tumors have a higher proliferative activity than sex hormone-receptor-positive tumors in human adenocarcinomas of the gastrointestinal tract. *Surg Today* 1998, **28**:1007–1014.
- Theodoropoulos GE, Lazaris AC, Panoussopoulos D, Davaris P, Golematis BC: Significance of estrogen receptors and cathepsin D tissue detection in gastric adenocarcinoma. *J Surg Oncol* 1995, **58**:176–183.
- Karat D, Brotherick I, Shenton BK, Scott D, Rames SA, Griffin SM: Expression of oestrogen and progesterone receptors in gastric cancer: a flow cytometric study. *Br J Cancer* 1999, **80**:1271–1274.
- Matsui M, Kojima O, Kawakami S, Uehara Y, Takahashi T: The prognosis of patients with gastric cancer possessing sex hormone receptors. *Surg Today* 1992, **22**:421–425.
- Machado JC, Carneiro F, Gärtner F, Ribeiro P, Sobrinho-Simões M: Female sex hormone receptors are not involved in gastric carcinogenesis. A biochemical and immunohistochemical study. *Eur J Cancer Prev* 1994, **3**(Suppl 2):31–37.
- Chaubert P, Bouzourene H, Saraga E: Estrogen and progesterone receptors and p52 and ERD5 antigens in gastric carcinomas from the European population. *Mod Pathol* 1996, **9**:189–193.
- Matsuyama S, Ohkura Y, Eguchi H, Kobayashi Y, Akagi K, Uchida K, Nakachi K, Gustafsson JA, Hayashi S: Estrogen receptor beta is expressed in human stomach adenocarcinoma. *J Cancer Res Clin Oncol* 2002, **128**:319–324.
- Takano N, Iizuka N, Hazama S, Yoshino S, Tangoku A, Oka M: Expression of estrogen receptor-alpha and -beta mRNAs in human gastric cancer. *Cancer Lett* 2002, **176**:129–135.
- Wang M, Pan JY, Song GR, Chen HB, An LJ, Qu SX: Altered expression of estrogen receptor alpha and beta in advanced gastric adenocarcinoma: correlation with prothymosin alpha and clinicopathological parameters. *Eur J Surg Oncol* 2007, **33**:195–201.
- Guo JL, Xu CY, Jiang ZN, Dong MJ, Xie SD, Shen JG, Cao J, Wang LB: Estrogen receptor beta variants mRNA expressions in gastric cancer tissues and association with clinicopathologic parameters. *Hepatogastroenterology* 2010, **57**:1584–1588.
- Xu CY, Guo JL, Jiang ZN, Xie SD, Shen JG, Shen JY, Wang LB: Prognostic role of estrogen receptor alpha and estrogen receptor beta in gastric cancer. *Ann Surg Oncol* 2010, **17**:2503–2509.
- Ryu WS, Kim JH, Jang YJ, Park SS, Um JW, Park SH, Kim SJ, Mok YJ, Kim CS: Expression of estrogen receptors in gastric cancer and their clinical significance. *J Surg Oncol* 2012, **106**:456–461.

28. Kominea A, Konstantinopoulos PA, Kapranos N, Vondoros G, Gkermepesi M, Andricopoulos P, Artelaris S, Savva S, Varakis I, Sotiropoulou-Bonikou G, Papavassiliou AG: **Androgen receptor (AR) expression is an independent unfavorable prognostic factor in gastric cancer.** *J Cancer Res Clin Oncol* 2004, **130**:253–258.
29. Kononen J, Bubendorf L, Kallioniemi A, Bärklund M, Schraml P, Leighton S, Torhorst J, Mihatsch MJ, Sauter G, Kallioniemi OP: **Tissue microarrays for high-throughput molecular profiling of tumor specimens.** *Nat Med* 1998, **4**:844–847.
30. Kallioniemi OP, Wagner U, Kononen J, Sauter G: **Tissue microarray technology for high-throughput molecular profiling of cancer.** *Hum Mol Genet* 2001, **10**:657–662.
31. Allred DC, Clark GM, Elledge R, Fuqua SA, Brown RW, Chamness GC, Osborne CK, McGuire WL: **Association of p53 protein expression with tumor cell proliferation rate and clinical outcome in node-negative breast cancer.** *J Natl Cancer Inst* 1993, **85**:200–206.
32. Raso MG, Behrens C, Herynk MH, Liu S, Prudkin L, Ozburn NC, Woods DM, Tang X, Mehran RJ, Moran C, Lee JJ, Wistuba II: **Immunohistochemical expression of estrogen and progesterone receptors identifies a subset of NSCLCs and correlates with EGFR mutation.** *Clin Cancer Res* 2009, **15**:5359–5368.
33. Verma MK, Miki Y, Abe K, Niikawa H, Sasano H: **Cytoplasmic estrogen receptor β as a potential marker in human non-small cell lung carcinoma.** *Expert Opin Ther Targets* 2012, **16**(Suppl 1):S91–S102.
34. Chandanos E, Lagergren J: **Oestrogen and the enigmatic male predominance of gastric cancer.** *Eur J Cancer* 2008, **44**:2397–2403.
35. Aranda A, Pascual A: **Nuclear hormone receptors and gene expression.** *Physiol Rev* 2001, **81**:1269–1304.
36. Harrison JD, Morris DL, Ellis IO, Jones JA, Jackson I: **The effect of tamoxifen and estrogen receptor status on survival in gastric carcinoma.** *Cancer* 1989, **64**:1007–1010.

doi:10.1186/1471-2407-12-566

Cite this article as: Gan et al.: Expression profile and prognostic role of sex hormone receptors in gastric cancer. *BMC Cancer* 2012 **12**:566.

Submit your next manuscript to BioMed Central and take full advantage of:

- Convenient online submission
- Thorough peer review
- No space constraints or color figure charges
- Immediate publication on acceptance
- Inclusion in PubMed, CAS, Scopus and Google Scholar
- Research which is freely available for redistribution

Submit your manuscript at
www.biomedcentral.com/submit

