

CORRECTION

Open Access



Correction: Repurposing mechanistic insight of PDE-5 inhibitor in cancer chemoprevention through mitochondrial-oxidative stress intervention and blockade of DuCLOX signalling

Manjari Singh^{1†}, Sweta Kasna^{1†}, Subhadeep Roy¹, Sara Aldosary², Abdulaziz S. Saeedan³, Mohd. Nazam Ansari³ and Gaurav Kaithwas^{1*}

Correction: *BMC Cancer* 19, 996 (2019)
<https://doi.org/10.1186/s12885-019-6152-9>

Following publication of the original article [1], it was reported that there was an error in Fig. 5. The corrected Fig. 5 is supplied in this correction article.

Author details

¹Department of Pharmaceutical Sciences, Babasaheb Bhimrao Ambedkar University, (A Central University), Vidya Vihar, Raebareli road, Lucknow, UP 226 025, India. ²Department of Pharmaceutical Sciences, King Faisal University, Al-Ahsa, Saudi Arabia. ³Department of Pharmacology, College of Pharmacy, Prince Sat-tam Bin Abdulaziz University, Al-Kharj, Kingdom of Saudi Arabia.

Published online: 27 July 2022

The original article can be found online at <https://doi.org/10.1186/s12885-019-6152-9>.

[†]Manjari Singh and Sweta Kasna contributed equally to this work.

*Correspondence: gauravpharm@hotmail.com; gauravk@bbau.ac.in

¹ Department of Pharmaceutical Sciences, Babasaheb Bhimrao Ambedkar University, (A Central University), Vidya Vihar, Raebareli road, Lucknow, UP 226 025, India

Full list of author information is available at the end of the article



© The Author(s) 2022. **Open Access** This article is licensed under a Creative Commons Attribution 4.0 International License, which permits use, sharing, adaptation, distribution and reproduction in any medium or format, as long as you give appropriate credit to the original author(s) and the source, provide a link to the Creative Commons licence, and indicate if changes were made. The images or other third party material in this article are included in the article's Creative Commons licence, unless indicated otherwise in a credit line to the material. If material is not included in the article's Creative Commons licence and your intended use is not permitted by statutory regulation or exceeds the permitted use, you will need to obtain permission directly from the copyright holder. To view a copy of this licence, visit <http://creativecommons.org/licenses/by/4.0/>. The Creative Commons Public Domain Dedication waiver (<http://creativecommons.org/publicdomain/zero/1.0/>) applies to the data made available in this article, unless otherwise stated in a credit line to the data.

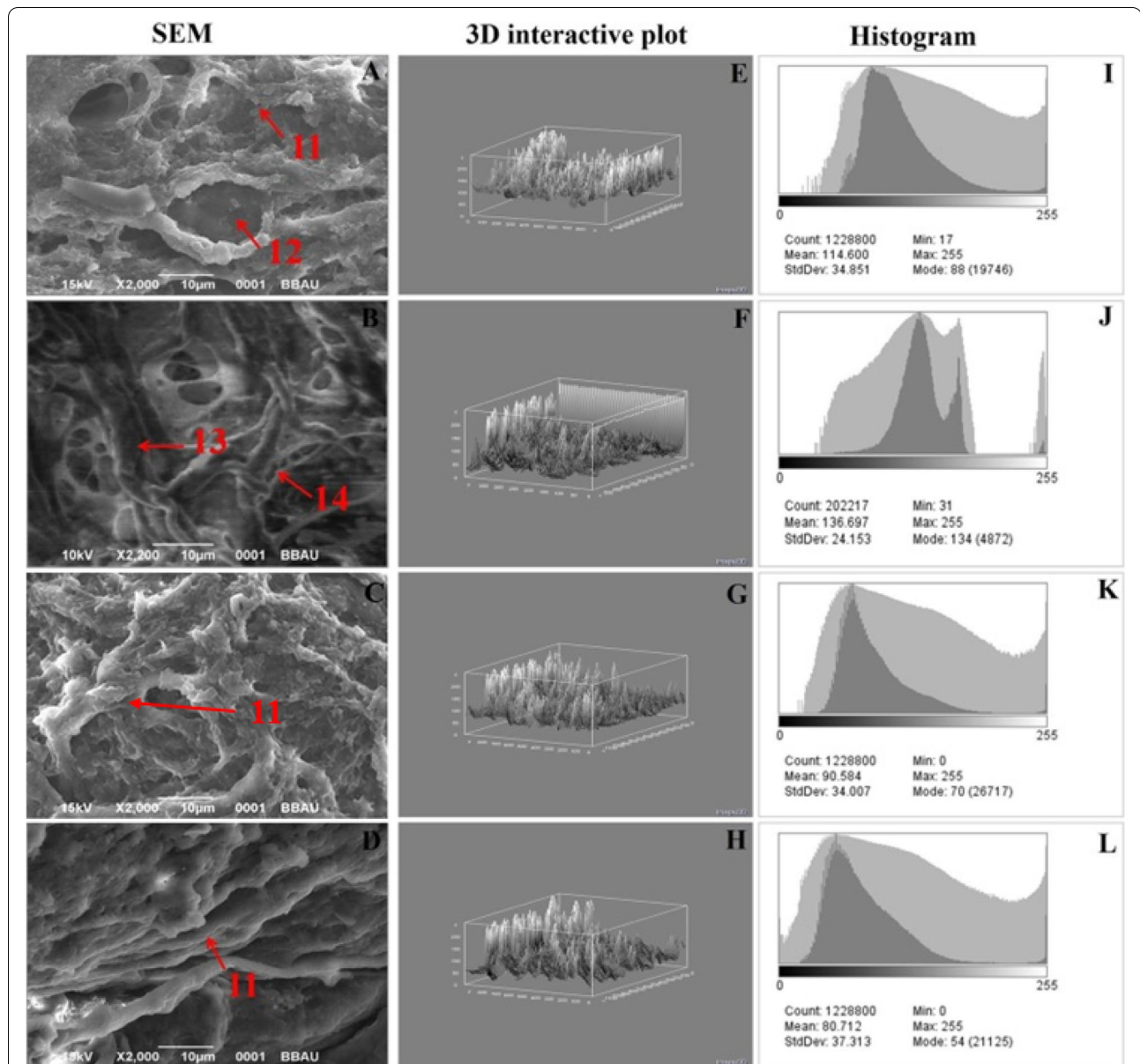


Fig. 5 SEM and digital image analysis of mammary gland tissue. SEM analysis of four individual groups [**a**-control (normal saline, 3 ml/kg, p.o.); **b**-toxic control (MNU 47 mg/kg, i.v.); **c** (MNU + Tadalafil; 47 mg/kg i.v. + 2 mg/kg p.o.) and **d** (MNU + Tadalafil; 47 mg/kg i.v. + 4 mg/kg p.o.)] was performed. Control (**a**) demonstrated presence of collagenous layers (11), duct (12), nodules (13) and small capillary network (14). MNU (**b**) administration perceived loss of collagenous covering (11) and formation of tumormicrovessels/small capillary network (14) and nodules (13). Tadalafil treatment restores all the cell organelles close to normal. 3D image reconstruction and software-based analysis dataset of constructs representing score was done by using Image J (NIH) software by thresh holding of stained zones of H&E images followed by pixel vs intensity determination by the 3D interactive surface plot and log-histogram analysis (**e,f,g,h** and **ij,k,l**)