

Research article

Open Access

A genetic polymorphism of the osteoprotegerin gene is associated with an increased risk of advanced prostate cancer

Naofumi Narita¹, Takeshi Yuasa*¹, Norihiko Tsuchiya¹, Teruaki Kumazawa¹, Shintaro Narita¹, Takamitsu Inoue¹, Zhiyong Ma¹, Mitsuru Saito¹, Yohei Horikawa¹, Shigeru Satoh¹, Osamu Ogawa² and Tomonori Habuchi¹

Address: ¹Department of Urology, Akita University School of Medicine, 1-1-1 Hondo Akita, 010-8543, Japan and ²Department of Urology, Kyoto University Graduate School of Medicine, 54 Shogoin Kawahara, Sakyo-ku, Kyoto, 606-8507, Japan

Email: Naofumi Narita - narita@doc.med.akita-u.ac.jp; Takeshi Yuasa* - yuasa@doc.med.akita-u.ac.jp; Norihiko Tsuchiya - tsuchiya@med.akita-u.ac.jp; Teruaki Kumazawa - kuma@doc.med.akita-u.ac.jp; Shintaro Narita - nari6202@gipc.akita-u.ac.jp; Takamitsu Inoue - takamitsu@doc.med.akita-u.ac.jp; Zhiyong Ma - mzhiyong@med.akita-u.ac.jp; Mitsuru Saito - mitsaito@med.akita-u.ac.jp; Yohei Horikawa - horikawa@doc.med.akita-u.ac.jp; Shigeru Satoh - shigerus@doc.med.akita-u.ac.jp; Osamu Ogawa - ogawao@kuhp.kyoto-u.ac.jp; Tomonori Habuchi - thabuchi@doc.med.akita-u.ac.jp

* Corresponding author

Published: 6 August 2008

Received: 2 April 2008

BMC Cancer 2008, 8:224 doi:10.1186/1471-2407-8-224

Accepted: 6 August 2008

This article is available from: <http://www.biomedcentral.com/1471-2407/8/224>

© 2008 Narita et al; licensee BioMed Central Ltd.

This is an Open Access article distributed under the terms of the Creative Commons Attribution License (<http://creativecommons.org/licenses/by/2.0>), which permits unrestricted use, distribution, and reproduction in any medium, provided the original work is properly cited.

Abstract

Background: The purpose of this study was to evaluate the role of osteoprotegerin gene (*OPG*) polymorphisms as genetic modifiers in the etiology of prostate cancer (PCa) and disease progression.

Methods: Three hundred and sixty one patients with PCa and 195 normal controls were enrolled in the study, and two genetic polymorphisms, 149 T/C and 950 T/C in the putative promoter region of *OPG*, were genotyped.

Results: There was no significant difference in the genotype frequencies between PCa patients and controls ($P = 0.939$ and 0.294 for 149 T/C and 950 T/C polymorphisms, respectively). However, those patients with TC and TT genotypes in the 950 T/C polymorphism had a significantly increased risk of extraprostatic (age-adjusted odds ratio; aOR = 1.74 and 2.03 for TC and TT genotypes compared with the CC genotype, $P = 0.028$) and metastatic disease (aOR = 1.72 and 2.76 for TC and TT genotypes compared with the CC genotype, $P = 0.009$) compared with those with the CC genotype. In addition, analysis of the metastatic PCa patients (Stage D) showed that the presence of the T allele of the *OPG* 950 T/C polymorphism was an independent risk factor predicting survival by Cox proportional hazard regression analyses ($P = 0.031$).

Conclusion: Progression of PCa may be influenced by an intrinsic genetic factor of the host's bone metabolism. The variant C allele of 950 T/C in the *OPG* promoter may play a major role as a genetic safe guard against progression in patients with PCa.

Background

Prostate cancer (PCa) has a very high proclivity for metas-

tasizing to bone, with approximately 90% of men with advanced disease having skeletal lesions [1]. Bone is an

abundant repository for immobilized growth factors. When osteoclasts absorb bone by secreting protons and proteases, these growth factors are released and provide fertile ground in which tumor cells can grow. Bone-derived growth factors and adhesive molecules secreted by tumor cells can cause modifications in the development and progression of metastatic cancer growth. Indeed, our recent investigation disclosed that a genetic polymorphism in the insulin-like growth factor I gene (*IGF1*) is a strong modifier of PCa progression [2]. Thus, genetic factors involved in the interaction between prostate cancer cells and normal host cells in the bone environment such as osteoclasts and osteoblasts may be a significant determinant in the progression, and bone metastasis, of prostate cancer.

The receptor activator of nuclear factor-kappa B (RANK, also called tumor necrosis factor receptor super family member 11A; TNFRSF11A), its ligand, RANKL (also called TNF ligand super family member 11; TNFSF11), and osteoprotegerin (OPG, also called as TNFRSF11B) are the major regulators of bone metabolism [3,4]. RANKL is a cytokine produced by osteoblasts that stimulates osteoclast activity and inhibits osteoclast apoptosis through binding to its receptor, RANK, which is expressed on osteoclasts and their precursors [3]. OPG, which acts as an inhibitor of osteoclastogenesis by serving as a decoy receptor for RANKL, is a potent inhibitor of osteoclastic bone resorption and has been investigated as a potential therapeutic modality for the treatment of both osteoporosis and tumour-induced bone disease [3-6].

The promoter region of human *OPG* contains various putative transcription factor binding sites that may mediate the stimulation of *OPG* expression by different calcitropic factors [7]. Polymorphisms in this region of *OPG* may contribute to the genetic regulation of bone mass, as suggested by several recent publications [8-13]. Through the inhibition of osteoclast-genesis, OPG has been suggested to be an important modifier of bone metabolism and bone metastasis [3-6]. Consequently, in this study we used a cohort of 361 PCa patients and 195 male controls to investigate the hypothesis that polymorphisms in the promoter region of *OPG* may be genetic modifiers of the development and progression of PCa.

Methods

Subjects

A total of 556 native Japanese subjects consisting of 361 PCa patients and 195 male controls were enrolled in our study. Control subjects were selected randomly from a native Japanese population attending a medical check-up at our community hospitals in Akita prefecture. All of the patients with PCa were treated at the Akita University Medical Center and the Kyoto University Hospital from

January 1991 to January 2006. All of the PCa patients were diagnosed histologically with specimens obtained from transrectal needle biopsy or transurethral resection of the prostate for voiding symptoms. The prostate specific antigen (PSA) levels of all the controls were measured and men with a PSA level of 4.0 ng/ml or more were omitted from the control group. The pathological grading and clinical stage of PCa were determined according to the Tumor-Node-Metastatic system, the Gleason's histological grading, and the modified Whitmore-Jewett system [14-16]. All pathological grading was based on needle biopsy specimens in stage B-D patients and surgical specimens in stage A patients. We categorized the tumor grading into 3 groups: a high grade group consisting of Gleason 8-10 or poorly differentiated adenocarcinoma, an intermediate grade group consisting of Gleason 5-7 or moderately differentiated adenocarcinoma and a low grade group consisting of Gleason 2-4 or well-differentiated adenocarcinoma [2]. The study was carried out in compliance with the Helsinki declaration and was approved by the institutional review board at Akita University School of Medicine. Written informed consent was obtained from all of the subjects in this study.

OPG genotyping analysis

OPG genotyping was analyzed by a polymerase chain reaction restriction fragment length polymorphism (PCR-RFLP) method. Two DNA fragments spanning 178 bp containing the 149 T/C single nucleotide polymorphism (SNP, rs3134071, 1024 bp upstream of the translation initiation site) and 147 bp containing the 950 T/C SNP (rs2073617, 223 bp upstream of the translation initiation site) in the *OPG* 5' untranslated region were amplified from genomic DNA. The PCR primer sequences were 5'-GTAATCCATGAATGGACCACACT-3' and 5'-ATCGGAGCTTCCTACGCGCTGA-3', and 5'-GGGGATCCTTCCGCCCA-3' and 5'-GTATCGCCTGCCTTTGATCAGT-3' for the fragment containing the 149 T/C and 950 T/C SNPs, respectively. Each PCR reaction was performed as described previously [2]. Digestion of the fragment containing 149 T/C with *Xba*I resulted in two fragments of 129 and 49 bp containing the C allele, and a 178 bp fragment containing the T allele. On the other hand, digestion of the PCR products containing 950 T/C by *Hinc*II resulted in 2 fragments of 110 and 37 bp with the C allele, and a 147 bp fragment with the T allele. These genotypes were confirmed by an automated sequencer (ABI PRISM 310 Genetic Analyzer; GMI Inc, Ramsey, MN) with GENESCAN software (Applied Biosystems, Foster City, CA).

Determination of the serum level of OPG

The serum levels of OPG in 192 male controls and 66 PCa patients were determined using enzyme-linked immunosorbent assays (ELISA, R&D Systems, Minneapolis, MN) according to the manufacturer's protocol. This control

group consisted of 192 healthy volunteers, who were recruited in Akita prefecture and whose serum PSA levels were less than 4.0 ng/dl.

Statistical Analysis

Hardy-Weinberg equilibrium analyses were performed to compare the observed genotype frequencies of each category with the expected ones using a chi-square test (degrees of freedom = 1). The frequency of each allele and the relationship between each genotype were analyzed by chi-square analysis. Possible significant differences in age and serum variables in each genotype-stratified group were assessed by two-way analysis of variance (ANOVA). The age-adjusted odds ratio (aOR) and 95% confidence interval (CI) for the relative risk of PCa and the relationship between the genotype distribution and the tumor grade or stage were determined by multivariate logistic regression analysis with the inclusion of the factor of age. In addition, the gene dosage effect of the *T* allele was assessed by modeling a linear effect on the log odds scale for each *T* allele in a multivariate logistic regression, for example the genotypes *TT*, *TC*, and *CC* were assigned the values "2," "1," and "0," respectively. Survival time was calculated from the date of prostate cancer diagnosis to the day of cancer-specific death, with deaths from other causes excluded. Cancer-specific survival was estimated using the Kaplan-Meier method and the differences in survival were tested using the log rank test. Hazard ratios (HRs) and 95% CIs for cancer death were assessed by the Cox proportional hazard regression model. All of the data were entered into an access database and analyzed using the Excel 2000 and SPSS (version 10.0J; SPSS, Inc.) software. A probability (*P*) of < 0.05 was considered to be statistically significant. The linkage disequilibrium between the two loci was analyzed with LDA software (Linkage Disequilibrium Analyzer, version 1.0, Chinese National Human Genome Center, Beijing, China).

Results

Subject Characteristics

The mean age \pm SD was 64.6 ± 9.2 years for the controls and 66.8 ± 10.0 for the PCa patients. The controls were significantly younger than the PCa patients (*P* = 0.042). There were 24 stage A patients whose PCa was diagnosed incidentally by specimens removed for Benign prostatic hyperplasia (BPH) treatment. By clinical findings, 184 and 56 patients with PCa were classified into stage B and C disease, respectively. In total, 97 patients were classified as having metastatic PCa; eleven PCa patients had clinical stage D1 disease, while 86 had clinical D2 disease judged by radiological studies. (Table 1).

OPG genotypes and risk of PCa

A recent report revealed that the OPG polymorphisms in the promoter region, 149 *T/C*, 209 *G/A*, and 245 *T/G* are

in strong linkage disequilibrium [9]. These three polymorphisms have been shown to provide TGT or CAG haplotypes [9]; therefore we investigated the genotype of 149 *T/C* among these polymorphisms. In addition, we analyzed another polymorphism, 950 *T/C*, which is located 801 bp downstream of the 149 *T/C* polymorphism. There is no report showing any linkage disequilibrium between the polymorphism at 950 *T/C* and any other surrounding SNPs. We examined the linkage disequilibrium between these two loci. The r^2 and D' value of the patients with PCa were 0.1163 and 0.6875, respectively. These results suggested that no tight linkage disequilibrium between the two loci was shown. The frequencies of the 149 *T/C* and 950 *T/C* genotypes in the PCa and control groups are shown in Table 1. The *OPG* genotype frequency in each group (PCa and control) was in Hardy-Weinberg equilibrium (*P* > 0.05, data not shown). No significant differences in the allele frequencies were found when the PCa patients (149 *T/C*; T:C = 0.87:0.13, 950 *T/C*; T:C = 0.60:0.40) were compared with the controls (149 *T/C*; T:C = 0.89:0.11, 950 *T/C*; T:C = 0.60:0.40). To evaluate the risk of PCa according to the *OPG* genotype, logistic regression analysis was conducted with an adjustment for age at the time of diagnosis (Table 1). No significant increased risk was observed among the different genotypes of patients with PCa and the controls (*P* = 0.939 and 0.294 for 149 *T/C* and 950 *T/C* polymorphisms, respectively).

OPG Genotypes and PCa disease status

Next, we examined the association between the genotypes of *OPG* 149 *T/C* and 950 *T/C* and clinicopathological variables at the time of diagnosis. Regarding the 149 *T/C* polymorphism, no significant differences in the allele frequencies were found between low/intermediate and high grades or between low and high stages (data not shown).

Regarding the 950 *T/C* polymorphism, no significant differences in the allele frequencies were found between the low/intermediate and high grades (Table 1). However, the frequency of the *CC* genotype in the 950*T/C* polymorphism decreased as the tumor stage increased (Table 1). The *TT* and *TC* genotypes were more frequently observed in patients with tumors of a higher stage than those of a lower stage (Table 1). A significant difference in the frequency of the *C* allele was found between the organ-confined PCa patients (stage A and B; T:C = 0.57:0.43) and the extraprostatic PCa patients (stage C and D; T:C = 0.65:0.35, *P* = 0.021), and between the localized PCa patients (stage A, B, and C; T:C = 0.57:0.43) and metastatic PCa patients (stage D; T:C = 0.69:0.31, *P* = 0.005) (Table 1). PCa patients with the *TT* genotype had a 2.76-fold and 2.03-fold increased risk of metastatic and extraprostatic diseases, respectively, compared to patients with the *CC* genotype (Table 2). When the *TT*, *TC*, and *CC* gen-

Table 1: Osteoprotegerin genotype frequencies in prostate cancer patients (PCa) and control males

149 T/C					
Study group	Total no.	CC	149 T/C Genotype TC	TT	C allele frequency (%)
PCa ^a	361	4 (1.1)	84 (23.3)	273 (75.6)	12.742
Stage ^b					
A	24	1 (4.2)	5 (20.8)	18 (75.0)	14.583
B	184	1 (0.5)	40 (21.7)	143 (77.8)	11.413
C	56	1 (1.8)	16 (28.6)	39 (69.6)	16.071
D	97	1 (1.0)	23 (23.7)	73 (75.3)	12.886
Organ confined PCa	208	2 (1.0)	45 (21.6)	161 (77.4)	11.778
Extraprostatic PCa	153	2 (1.3)	39 (25.5)	112 (73.2)	14.052
Localized Pca	264	3 (1.1)	61 (23.1)	200 (75.8)	12.689
Metastatic Pca	97	1 (1.0)	23 (23.7)	73 (75.3)	12.887
Grade ^c					
Low/Intermediate	257	1 (0.4)	55 (21.4)	201 (78.2)	11.089
High	104	3 (2.9)	29 (27.9)	72 (69.2)	16.826
Control	195	3 (1.5)	37 (19.0)	155 (79.5)	11.026

950 T/C					
Study group	Total no.	CC	950 T/C Genotype (%) TC	TT	C allele frequency (%)
PCa ^a	361	63 (17.4)	162 (44.9)	136 (37.7)	39.889
Stage ^b					
A	24	8 (33.3)	8 (33.3)	8 (33.3)	50
B	184	36 (19.6)	84 (45.6)	64 (34.8)	42.391
C	56	9 (16.0)	30 (53.6)	17 (30.4)	42.857
D	97	11 (10.3)	39 (41.2)	47 (48.5)	30.927
Organ confined PCa	208	44 (21.2)	92 (44.2)	72 (34.6)	43.269
Extraprostatic PCa	153	19 (12.4)	70 (45.8)	64 (41.8)	35.294
Localized Pca	264	53 (20.0)	122 (46.3)	89 (33.7)	43.181
Metastatic Pca	97	11 (10.4)	39 (41.2)	47 (48.4)	30.927
Grade ^c					
Low/Intermediate	257	48 (18.7)	116 (45.1)	93 (36.2)	41.245
High	104	15 (14.4)	46 (44.3)	43 (41.3)	36.538
Control	195	29 (14.9)	98 (50.2)	68 (34.9)	40

^a Prostate cancer versus control, $P = 0.939$ and 0.294 by the chi-square test for 149 T/C and 950 T/C, respectively.

^b According to the Whitmore-Jewett system. Stage A = $T_{1-2}N_0M_0$, Stage B = $T_{1-2}N_0M_0$, Stage C = $T_{3-4}N_0M_0$ and Stage D = $T_{1-4}N_1M_{0-1}$ or $T_{1-4}N_{0-1}M_1$. Localized PCa (Stage A + B + C) versus Metastatic PCa (Stage D) $P = 0.931$ and 0.005 by the chi-square test for 149 T/C and 950T/C, respectively. Organ confined (Stage A + B) versus Extraprostatic PCa (Stage C + D), $P = 0.346$ and 0.021 by the chi-square test for 149 T/C and 950T/C, respectively.

^c Low grade = well-differentiated carcinoma (WHO) or Gleason score 2–4 carcinoma, Intermediate grade = moderately differentiated carcinoma (WHO) or Gleason score 5–7 carcinoma, High grade = poorly differentiated carcinoma (WHO) or Gleason score 8–10 carcinoma. C allele frequency, $P = 0.884$ and 0.520 by the chi-square test for 149 T/C and 950 T/C, respectively.

otypes were assigned the values "2," "1," and "0," respectively, the presence of the T allele significantly increased the risk of metastatic disease (aOR = 1.65, 95%CI = 1.17–2.33, $P = 0.005$) and extra prostatic disease (aOR = 1.37, 95%CI = 1.01–1.84, $P = 0.04$) with a gene-dosage effect. However, no significant difference in the genotype frequency was found among the three subgroups of tumor grade (low, intermediate, and high grade; $P = 0.253$).

Patient prognosis with metastatic PCa (Stage D) and OPG genotypes

Next, we investigated the association between the clinical variables and OPG 149 T/C and the 950 T/C genotype in patients with metastatic PCa (Stage D) after the initial diagnosis. Among the patients with metastatic PCa, the outcome and the serum variables of 90 patients were available for this study. Regarding the 149 T/C polymorphism, no significant differences in the allele frequencies were found between the clinical variables of these patients

Table 2: Age-adjusted odds ratios according to the Osteoprotegerin950 T/C genotype

Study group	Age-adjusted odds ratio (95% CI, P) according to the Osteoprotegerin 950 T/C genotype ^a		
	CC	TC	TT
Prostate cancer against control Tumor stage ^b	1.00	0.60 (0.345–1.032, 0.065)	0.73 (0.418–1.302, 0.294)
Stage D against Stage A+B+C	1.00	1.72 (0.801–3.698, 0.164)	2.76 (1.289–5.938, 0.009)
Stage C+D against Stage A+B	1.00	1.74 (0.937–3.253, 0.079)	2.03 (1.078–3.843, 0.028)
Tumor grade ^b			
High against Low +Intermediate	1.00	1.27 (0.649–2.498, 0.482)	1.48 (0.750–2.947, 0.256)

a These data were adjusted for age.

b The tumor stage and grade systems are the same as those in Table 1.

and the genotype (data not shown). Regarding the 950 T/C polymorphism, age, initial PSA, hemoglobin, alkaline phosphatase (ALP), and the biopsy histological grade were not significantly different among the CC, TC, and TT genotypes (Table 3). However, although the difference was not significant, the cause-specific survival of patients with the CC genotype was better than that of patients with the TC or TT genotype (OR = 2.938 and 3.018 for TC and TT genotypes compared with the CC genotype, $P = 0.087$ and 0.082 , respectively. Figure 1). In addition, according to the multivariate Cox proportional hazard regression analyses, the T allele of the OPG 950 T/C polymorphism was an independent risk factor predicting survival with HRs of 2.157 (95% CI = 1.072 – 4.341, $P = 0.031$, Table 4) compared to the C allele. These results also suggested that the variant C allele of 950 T/C in the OPG promoter may have some protective effect against the progression of PCa.

Serum level and genotypes of OPG in healthy controls and patients with PCa

We hypothesized that the promoter activity of OPG would reflect the OPG serum level. Consequently, we investi-

gated the association between the serum level of OPG and 149 T/C and 950 T/C genotypes in 192 normal controls and 74 PCa patients whose serum was available for this study. The mean serum levels of OPG for all of the normal controls, the patients with localized PCa and those with metastatic PCa were 52.6 ± 19.7 pg/ml ($n = 192$; median 48.7, quartile 39.3–60.4), 84.2 ± 32.7 pg/ml ($n = 66$; median 82.1, quartile 64.4–101), and 122.2 ± 34.4 pg/ml ($n = 8$; median 132, quartile 105–141.7), respectively. The serum level of OPG in patients with PCa was significantly higher than that of healthy controls ($P = 3.50 \times 10^{-22}$); however, the age of the patients with PCa was also significantly higher than that of the healthy controls ($P = 1.47 \times 10^{-13}$). Comparison of the OPG serum level in healthy controls and patients with PCa was therefore not conclusive. We also investigated the relationship between the OPG serum level and the 149 T/C and the 950 T/C genotypes in healthy controls and patients with PCa; no significant association was found (Figure 2A).

Table 3: Association between the clinical variables of patients with metastatic prostate cancer (Stage D) and the OPG 950T/C genotype

	Osteoprotegerin 950T/C genotype			p^3
	CC n = 11	TC n = 39	TT n = 40	
Age ¹	74 (69–79)	75 (68–81)	72 (65–76)	0.375
Histological grade ²				
Low/Intermediate	4 (9%)	18 (39%)	24 (52%)	0.641
High	7 (16%)	21 (48%)	16 (36%)	
Clinical variables at diagnosis ¹				
PSA (ng/ml)	199 (66.4–296)	257 (37.3–860)	116 (30.0–267)	0.270
Hemoglobin (g/dl)	12.8 (12.2–13.1)	12.7 (11.1–13.7)	13.2 (12.0–14.6)	0.194
ALP (IU/ml)	189 (175–468)	232 (177–360)	201 (138–343)	0.659

¹Values represent the median (inter-quartile range).

²Values represent the number (%).

³Analysis of variance or chi-square test.

Abbreviations: PSA; prostate specific antigen, ALP, alkaline phosphatase.

Table 4: Multivariate Cox proportional hazard regression analysis of predicting factors for cancer-specific survival of metastatic prostate cancer patients (Stage D)

	HR	Cancer Specific Survival 95% CI	P
PSA (ng/ml)			
≥260	1.984	0.756–5.210	0.164
< 260			
hemoglobin (g/dl)			
Abnormal (< 11.7)	2.632	1.140–6.077	0.023
Normal (≥11.7)			
ALP (IU)			
Abnormal (≥ 282)	2.557	0.994–6.574	0.051
Normal (< 282)			
Grade			
High	3.251	1.473–7.175	0.004
Low/Intermediate			
OPG			
T allele dosage	2.157	1.072–4.341	0.031

Abbreviations: HR; hazard ratio, 95% CI; 95% confidence interval, PSA; prostate specific antigen, ALP, alkaline phosphatase, OPG; osteoprotegerin 950 T/C genotype

OPG serum level by age and disease status in healthy controls and patients with PCa

We investigated the association between the OPG serum level and the age and disease status of the healthy controls

and patients with PCa. We detected a significant increase in the serum levels of OPG with age in the healthy controls, as well as in patients with non-metastatic PCa (stage B and C, Figure 2B). In addition, there was no significant

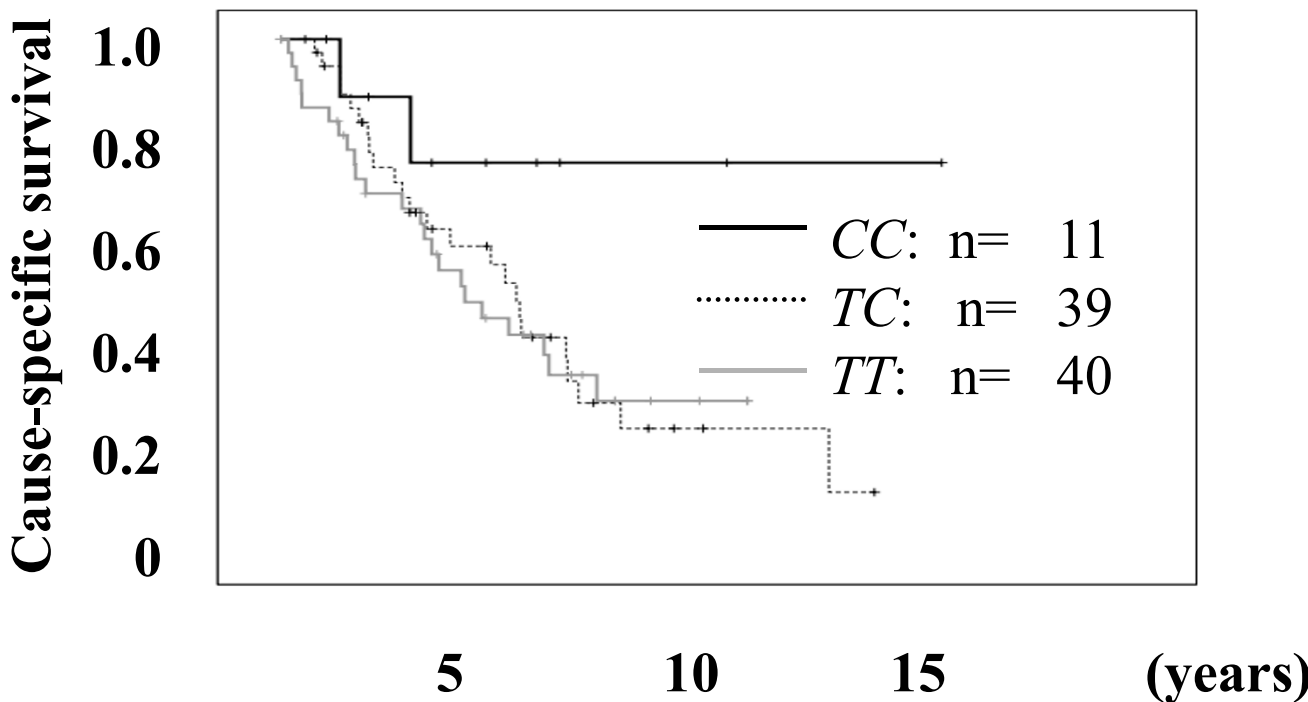


Figure 1
Comparison of the outcome of patients with PCa and the 950 T/C OPG genotype. The differences in cause-specific survival of the patients with the CC genotype versus the TC and TT genotypes were an OR of 2.938 and 3.018 ($P = 0.087$ and 0.082 , respectively).

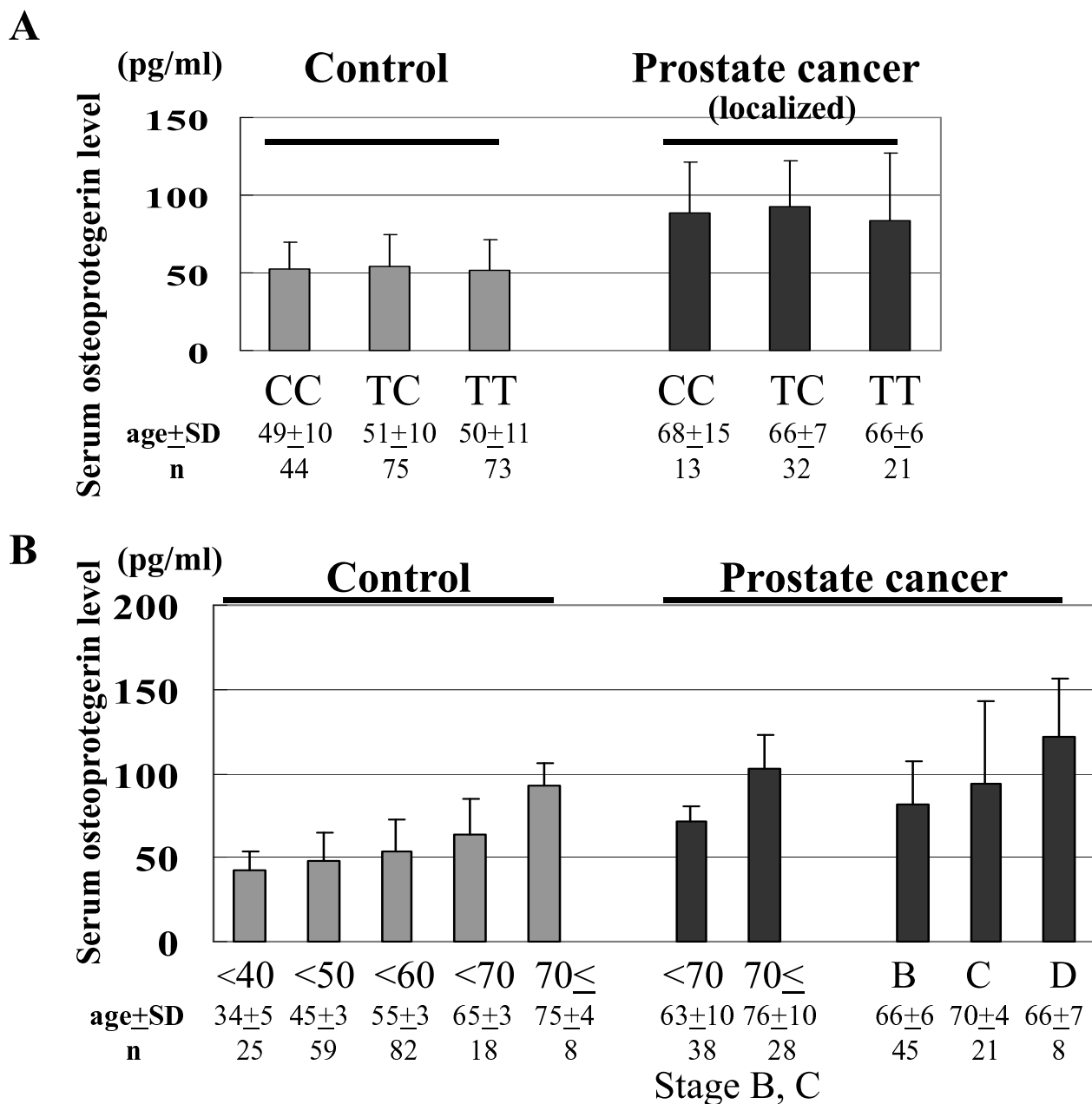


Figure 2
The serum OPG levels in healthy controls and patients with PCa. (A) Comparison of the serum OPG levels and the 950 T/C genotype in 192 healthy controls and 66 localized PCa patients. (B) Comparison of the serum OPG level by age and disease status (stage B, C, and D) in healthy controls and patients with PCa. *Age represents mean ± standard deviation.

difference between the age-matched serum OPG levels of the healthy controls and patients with non-metastatic PCa. The serum level of OPG in age-matched patients with metastatic PCa (stage D2) was significantly higher than that of patients without metastatic disease and healthy controls ($P = 0.012$ and 0.005 , respectively. Figure

2). These results suggest that aging and bone metastasis have a major effect on the serum level of OPG rather than PCa.

Discussion and conclusion

Over a hundred years ago, Stephen Paget enunciated the "seed and soil" hypothesis in which seeds of metastatic cancer cells preferentially settle in the soil of the bone matrix, where there is an abundant repository for immobilized growth factor [17]. In this study, we hypothesized that the host's bone metabolism may modify disease development and progression. Among many factors that play important roles in bone metabolism, OPG is a major factor in osteoclastogenesis and is known as osteoclast inhibitory factor [3,4]. In this study, no significant differences in the allele frequencies of 149 T/C polymorphism were found in the clinical and pathological variables in the patients with PCa. However, this study demonstrated that the C allele of the 950 T/C polymorphism in the OPG promoter region decreased the risk of advanced PCa with a gene-dosage effect. The C allele was found at a significantly lower frequency in patients with metastatic (stage D) and extraprostatic PCa (stage C+D) than in patients with localized (stage A+B+C) and organ confined PCa (stage A+B) (Table 2). In addition, the analysis of metastatic PCa patients (Stage D) revealed that the T allele of the OPG 950 T/C polymorphism was an independent risk factor predicting survival compared to the C allele by Cox proportional hazard regression analyses ($P = 0.031$). Although the 950 T/C is not a putative transcription factor binding site, an altered secondary structure may cause differences in OPG mRNA expression. Therefore, these results suggest that the T/C allele of the 950 T/C polymorphism functions as a modifier of OPG expression and has some effect on metastasis and the spread of PCa cells. Alternatively, it is possible that this polymorphism is in linkage disequilibrium with other SNP(s) that alters OPG function.

Although conflicting results have been documented [8-10], the genotype of the 950 T/C polymorphism has been reported to be independently associated with a subset of osteoporosis or bone marrow density (BMD). Vidal et al. reported that the T allele of the 950 T/C polymorphism was associated with low BMD, although statistical significance was not reached [11]. Arko et al. also revealed that the homozygote CC genotype of the 950 T/C polymorphism had the highest BMD of all of the anatomical sites [12]. In addition, Ohmori et al. demonstrated that the TT genotype had a significantly lower BMD than the TC and CC genotypes by parametric and non parametric analysis [13]. Interestingly, they used healthy DNA samples from the same prefecture, Akita in Japan. In addition, recent studies reported that the C allele 950 T/C polymorphism contributed to calcification of the vascular system and the osseous tissue [18-20].

Instead of measuring the expression level of OPG in the bone tissues, we compared the serum level of OPG for

each of the genotypes; however, there was no difference among these genotypes either in the healthy controls or the patients with PCa. The serum level of OPG was significantly higher in patients with bone metastasis than those without bone metastasis; this is in agreement with previous reports [21-23]. In addition, we found that the serum level of OPG in the older individuals was significantly higher than that of the younger ones. Our results support previous findings that the serum levels of OPG increase with age in relatively large healthy adult Caucasian populations [24,25]. In contrast, Lipton et al. reported that serum OPG values did not differ significantly by age, although they analyzed male and female healthy control samples together [26]. The relationship between age and serum OPG warrants further investigation because healthy controls have a tendency to be younger than patients with cancer, and patients with advanced stage disease are usually older than those with early stage cancer. Cao et al. demonstrated that OPG mRNA levels in bones of the adult male mouse were lower than those in young mice [27]. These results indicate that the serum levels of OPG do not precisely reflect the expression profile or OPG level in the local bone environment. Therefore, we could not confirm whether each 950 T/C polymorphism genotype had a considerable effect on OPG expression.

In conclusion, the OPG 950 T/C polymorphism was not associated with susceptibility to PCa in Japanese men. However, the presence of the variant C allele may have a considerable protective effect against metastasis or advanced disease status in patients with PCa. This effect is not associated with a biologically less aggressive (low grade) tumor, but may be due to the modification of cancer progression and metastasis through the host's bone metabolism. In order to clarify the role of OPG in the progression of PCa, further molecular studies are warranted.

Competing interests

The authors declare that they have no competing interests.

Authors' contributions

FN, TY, NT, TK, and SI carried out the molecular genetics studies, participated in the sequence alignment, drafted the manuscript. TI and MS performed the ELISA. ZM, YH, and SS performed the statistical analysis. TY, OO, and TH conceived of the study, and participated in its design and coordination. All authors read and approved the final manuscript.

Acknowledgements

We thank Ms. Yoko Mitobe and Yukiko Sugiyama for their technical assistance. This work was partly supported by Kobayashi Institute for Innovative Cancer Chemotherapy, the Shimadzu Science Foundation, the Sagawa Foundation for Promotion of Cancer Research, Grants-in-Aid for Scientific Research from the Ministry of Education, Culture, Sports, Science and

Technology, and the COE program of the Ministry of Education, Culture, Sports, Science and Technology, Japan.

References

- Roodman GD: **Mechanisms of bone metastasis.** *N Engl J Med* 2004, **350**:1655-64.
- Tsuchiya N, Wang L, Suzuki H, Segawa T, Fukuda H, Narita S, Shimbo M, Kamoto T, Mitsumori K, Ichikawa T, Ogawa O, Nakamura A, Habuchi T: **Impact of IGF-I and CYP19 gene polymorphisms on the survival of patients with metastatic prostate cancer.** *J Clin Oncol* 2006, **24**:1982-9.
- Wittrant Y, Theoleyre S, Chipoy C, Padrines M, Blanchard F, Heymann D, Redini F: **RANKL/RANK/OPG: new therapeutic targets in bone tumours and associated osteolysis.** *Biochim Biophys Acta* 2004, **1704**:49-57.
- Hofbauer LC, Schoppet M: **Clinical implications of the osteoprotegerin/RANKL/RANK system for bone and vascular diseases.** *JAMA* 2004, **292**:490-5.
- Corey E, Brown LG, Kiefer JA, Quinn JE, Pitts TE, Blair JM, Vessella RL: **Osteoprotegerin in prostate cancer bone metastasis.** *Cancer Res* 2005, **65**:1710-8.
- Zhang J, Dai J, Qi Y, Lin DL, Smith P, Strayhorn C, Mizokami A, Fu Z, Westman J, Keller ET: **Osteoprotegerin inhibits prostate cancer-induced osteoclastogenesis and prevents prostate tumor growth in the bone.** *J Clin Invest* 2001, **107**:1235-44.
- Morinaga T, Nakagawa N, Yasuda H, Tsuda E, Higashio K: **Cloning and characterization of the gene encoding human osteoprotegerin/osteoclastogenesis-inhibitory factor.** *Eur J Biochem* 1998, **254**:685-91.
- Langdahl BL, Carstens M, Stenkjaer L, Eriksen EF: **Polymorphisms in the osteoprotegerin gene are associated with osteoporotic fractures.** *J Bone Miner Res* 2002, **17**:1245-55.
- Yamada Y, Ando F, Niino N, Shimokata H: **Association of polymorphisms of the osteoprotegerin gene with bone mineral density in Japanese women but not men.** *Mol Genet Metab* 2003, **80**:344-9.
- Ueland T, Bollerslev J, Wilson SG, Dick IM, Islam FM, Mullin BH, Devine A, Prince RL: **No associations between OPG gene polymorphisms or serum levels and measures of osteoporosis in elderly Australian women.** *Bone* 2007, **40**:175-81.
- Vidal C, Brincat M, Xuereb R, Anastasi A: **TNFRSF11B gene variants and bone mineral density in postmenopausal women in Malta.** *Maturitas* 2006, **53**:386-95.
- Arko B, Prezelj J, Komel R, Kocijancic A, Hudler P, Marc J: **Sequence variations in the osteoprotegerin gene promoter in patients with postmenopausal osteoporosis.** *J Clin Endocrinol Metab* 2002, **87**:4080-4.
- Ohmori H, Makita Y, Funamizu M, Hirooka K, Hosoi T, Orimo H, Suzuki T, Ikari K, Nakajima T, Inoue I, Hata A: **Linkage and association analyses of the osteoprotegerin gene locus with human osteoporosis.** *J Hum Genet* 2002, **47**:400-6.
- International Union against Cancer: **From Prostate.** In *TNM classification of malignant tumors* 6th edition. Edited by: Sobin LH, Wittekind C. New York: Wiley-Liss; 2002:184-7.
- Gleason DF: **From Histological grading and clinical staging of prostate carcinoma.** In *Urologic pathology* Edited by: Tannenbaum M. New York: Wiley-Liss; 1977:171-97.
- Fleming ID, Ed: **Prostate Cancer.** In *AJCC Cancer Staging Manual* 6th edition. New York: Springer; 2002:309-316.
- Paget S: **The distribution of secondary growths in cancer of the breast.** *Lancet* 1889, **1**:571-573.
- Ohmori R, Momiyama Y, Taniguchi H, Tanaka N, Kato R, Nakamura H, Ohsuzu F, Nagano M, Egashira T: **Association between osteoprotegerin gene polymorphism and coronary artery disease in Japanese men.** *Atherosclerosis* 2006, **187**:215-7.
- Brandstrom H, Stiger F, Lind L, Kahan T, Melhus H, Kindmark A: **A single nucleotide polymorphism in the promoter region of the human gene for osteoprotegerin is related to vascular morphology and function.** *Biochem Biophys Res Commun* 2002, **293**:13-7.
- Soufi M, Schoppet M, Sattler AM, Herzum M, Maisch B, Hofbauer LC, Schaefer JR: **Osteoprotegerin gene polymorphisms in men with coronary artery disease.** *J Clin Endocrinol Metab* 2004, **89**:3764-8.
- Brown JM, Vessella RL, Kostenuik PJ, Dunstan CR, Lange PH, Corey E: **Serum osteoprotegerin levels are increased in patients with advanced prostate cancer.** *Clin Cancer Res* 2001, **7**:2977-83.
- Jung K, Lein M, Stephan C, Von Hosslin K, Semjonow A, Sinha P, Loening SA, Schnorr D: **Comparison of 10 serum bone turnover markers in prostate carcinoma patients with bone metastatic spread: diagnostic and prognostic implications.** *Int J Cancer* 2004, **111**:783-91.
- Eaton CL, Wells JM, Holen I, Croucher PJ, Hamdy FC: **Serum osteoprotegerin (OPG) levels are associated with disease progression and response to androgen ablation in patients with prostate cancer.** *Prostate* 2004, **59**:304-10.
- Kudlacek S, Schneider B, Woloszczuk W, Pietschmann P, Willvonseder R, Austrian Group on Normative Values of Bone Metabolism: **Serum levels of osteoprotegerin increase with age in healthy adult population.** *Bone* 2003, **32**:681-686.
- Indridason OS, Franzson L, Sigurdsson G: **Serum osteoprotegerin and its relationship with bone mineral density and markers of bone turnover.** *Osteoporos Int* 2005, **16**:417-423.
- Lipton A, Ali SM, Leitzel K, Chinchilli V, Witters L, Engle L, Holloway D, Bekker P, Dunstan CR: **Serum osteoprotegerin levels in healthy controls and cancer patients.** *Clin Cancer Res* 2002, **8**:2306-10.
- Cao J, Venton L, Sakata T, Halloran BP: **Expression of RANKL and OPG correlates with age-related bone loss in male C57BL/6 mice.** *J Bone Miner Res* 2003, **18**:270-7.

Pre-publication history

The pre-publication history for this paper can be accessed here:

<http://www.biomedcentral.com/1471-2407/8/224/prepub>

Publish with **BioMed Central** and every scientist can read your work free of charge

"BioMed Central will be the most significant development for disseminating the results of biomedical research in our lifetime."

Sir Paul Nurse, Cancer Research UK

Your research papers will be:

- available free of charge to the entire biomedical community
- peer reviewed and published immediately upon acceptance
- cited in PubMed and archived on PubMed Central
- yours — you keep the copyright

Submit your manuscript here:
http://www.biomedcentral.com/info/publishing_adv.asp

