

RESEARCH ARTICLE

Open Access

Impact of adjuvant chemotherapy for gliomatosis cerebri

Doo-Sik Kong^{1†}, Sung Tae Kim^{2†}, Jung-Il Lee¹, Yeon-Lim Suh³, Do Hoon Lim⁴, Won Seog Kim⁵, Ki-Hoon Kwon¹, Kwan Park¹, Jong Hyun Kim¹, Do-Hyun Nam^{1*}

Abstract

Background: Gliomatosis cerebri (GC) is characterized by a diffuse infiltration of tumor cells throughout CNS, however, few details are available about the chemotherapeutic effect on GC. The aim of this study was to investigate its clinical course and to determine the efficacy of chemotherapy for GC.

Methods: Between Jan. 1999 and Dec. 2004, 37 GC patients were diagnosed by biopsy and treated with radiotherapy in a single institution. To determine the efficacy of chemotherapy for GC, we retrospectively reviewed their clinical courses. The study cohort was divided into 2 groups, those with and without receiving post-radiotherapy adjuvant chemotherapy such as temozolomide or nitrosourea-based chemotherapy.

Results: Nineteen patients with adjuvant chemotherapy were assigned to the chemotreatment group and 18 with radiotherapy alone were assigned to the control group. Mean survival for chemotreatment group and control group were 24.2 and 13.1 months, respectively ($p = 0.045$). Time to progression for these groups were 16.0 and 6.0 months, respectively ($p = 0.007$). Overall review of the clinical course of patients with GC provided that early appearance of new contrast-enhancing lesions within 6 months from the initial diagnosis and higher histological grade were closely associated with poor survival ($p < 0.001$ and $p = 0.008$).

Conclusion: Adjuvant chemotherapy following radiotherapy could prolong the survival in patients with GC. In addition, newly developed contrast-enhanced lesions on the follow-up MR images indicate the progression of GC.

Background

Gliomatosis cerebri (GC) is a rare variant of glioma. It is characterized by a diffuse infiltration of malignant glial cells throughout large regions of the central nervous system [1-6] and a relative preservation of the neural architecture. Since Nevin first used the term gliomatosis cerebri in 1938, describing the histological finding of glial overgrowth of the brain [7], the World Health Organization now defines GC as a diffuse glial tumor that extensively infiltrates the brain and involves more than multiple lobes (frequently bilaterally) [8]. Jennings et al. reported that GC can be divided into two forms based on descriptive neuropathological grounds [9,10]. Type I GC consists of well-differentiated low-grade gliomas without contrast enhancement and its clinical

course is often mild, with slow progression. Once the tumor begins to progress and cancerous dedifferentiation is observed, this type of tumor is referred to as type II GC, leading to clinical deterioration.

In the treatment of GC, radiotherapeutic effects as the first-line treatment have been supported by several studies [3,6,7,11]. However, chemotherapeutic effects as an adjuvant treatment or first-line treatment are not definitely proved yet [10,12,13]. Here, we present a series of 37 GC patients who underwent radiotherapy for GC. To identify the efficacy of adjuvant chemotherapy for GC, we analyzed and compared clinical outcome between adjuvant chemotherapy group and radiotherapy alone group.

Methods

Including criteria

We retrospectively identified 45 consecutive patients diagnosed with GC who were examined at a single institution between Jan. 1999 and Dec. 2004. Of these,

* Correspondence: nsnam@skku.edu

† Contributed equally

¹Department of Neurosurgery, Samsung Medical Center, Sungkyunkwan University School of Medicine, Seoul, Korea

Full list of author information is available at the end of the article

37 patients were included in this study based on the following criteria: 1) MRI evidence of diffuse, increased signal intensity on the T2-weighted or FLAIR images accompanied by a low or absent signal in the affected areas on T1 images, 2) lesions involving more than two cerebral lobes, 3) available serial MR images and clinical follow-up data, 4) who underwent radiotherapy for GC. Eight patients were excluded because of unavailable follow-up data or no treatment history. To rule out other inflammatory diseases, 24 patients underwent stereotactic biopsy and 13 patients did partial tumor resection immediately after radiological diagnosis. Information about treatment response was obtained by reviewing the patients' radiological data and clinical medical records. Immediately after surgery, local radiotherapy was performed in all patients. The extent of the radiotherapy was determined by the area of tumor involvement. A median 5800 cGy (5400-6000 cGy) were delivered according to routine treatment plans. **The study was approved by the local ethic committee.**

Patients characteristics

The chemotreatment group received adjuvant TMZ or nitrosourea-based chemotherapy following radiotherapy (n = 19), and the control group underwent radiotherapy alone (n = 18). There were no statistically significant

differences in baseline characteristics between the 2 groups (Table 1). For this cohort group, twenty-two patients were men (59.5%) and 15 patients were women (40.5%). The mean age at presentation was 41.2 years (range: 11-67 years). The median KPS at the time of initial diagnosis was 80 (range: 70-100). The MR images demonstrated a variety of findings including presence of: a dominant mass formation (18 cases) or a diffuse infiltration pattern (19 cases), initial dimly enhanced lesions or not (6 vs. 31 cases), brainstem involvement or not (11 vs. 26 cases), and tumor extent, i.e., involving two lobes or ≥ 3 lobes (13 vs. 24 cases). Based on the histopathological data, 23 patients were diagnosed as having a tumor with low-grade features (grade II) and 14 patients were diagnosed as having tumor with high-grade features (grade III).

Adjuvant chemotherapy

19 of 37 patients (51.4%) received adjuvant chemotherapy after radiotherapy, while 18 other patients underwent local radiotherapy alone. Chemotherapeutic regimens included temozolomide (TMZ) (200 mg/m² \times consecutive 5 days per month, 3-9 cycles) and nitrosourea-based chemotherapy such as BCNU (carmustine-[1,3-bis (2-chloroethyl)-1-nitrosourea]), PCV (procarbazine/lomustine/vincristine). The choice of

Table 1 Characteristics of the patients with gliomatosis cerebri

Variable	Chemotreatment group (n = 19)	Control group (n = 18)	P
Age			0.579
Median	44.4	43.5	
range	13-58	11-67	
Gender			0.638
Male	12	10	
Female	7	8	
KPS score			0.713
≥ 70	16	15	
< 70	3	3	
Grade			0.420
Low	13	10	
High	6	8	
Mass formation			0.738
Dominant mass	9	9	
Diffuse infiltration	10	9	
Brainstem involvement			0.717
Yes	6	5	
No	13	13	
Hemisphere involvement			0.654
Unilateral	11	11	
Bilateral	8	7	
Operation			0.823
Biopsy	12	12	
Partial tumor removal	7	6	

chemotherapeutic regimens was dependent upon how much tumors had oligodendroglial components. At an earlier period, PCV chemotherapy was given for 5 patients with tumor which dominantly contained oligodendroglial components, while BCNU treatment (4 patients) was performed for tumors with dominant astrocytic components. However, since TMZ treatment had been widely introduced into our institution in 2002, 10 patients received TMZ treatment regardless of the cellular components.

All patients were assessed by serial MR images with contrast enhancement. The follow-up images were evaluated for progression versus no progression by a radiologist (Kim ST) blinded to the pathological and clinical findings. During the follow-up period, we sometimes observed new contrast-enhancing lesions, which had been absent in the previous studies. These contrast-enhancing lesions were patched or punctuated lesions [14,15] and located in the mid-portion of widely infiltrated lesions on FLAIR images. They could be differentiated from radiation necrosis by several MR sequences (diffusion/perfusion weighted images, MR spectroscopy, or FDG-PET) [16-20]. It was difficult to apply the tumor response criteria commonly used for high-grade gliomas because of the lack of discrete and measurable tumor margins. Tumor progression was assessed by semi-quantitative analysis of the tumor extent in T2-weighted or FLAIR-weighted MR images using commercially available image analysis software (SCION Corp.).

In cases of tumor recurrence or progression, we performed surgical resection of the enhancing lesions in 10 patients or gamma knife radiosurgery in 6 patients. All patients with tumor recurrence or progression received 2nd-line chemotreatment.

Statistical analysis

Overall survival and progression-free survival were calculated using the Kaplan-Meier method and groups were compared with the log-rank test. For statistical analysis, age, gender, KPS, histological grade, degree of resection, and involvement of brainstem were compared using Fisher exact test or Mann-Whitney test between the chemotreatment group and the control group. The Cox proportional hazards model with a stepwise procedure was used in the multi-variate survival analysis to assess the prognostic factors for survival. P values of less than 0.05 were considered statistically significant for all tests, using the SPSS software (SPSS version 10.0, Chicago, IL).

Results

During the follow-up period, median time to new appearance of contrast-enhancing lesions was 12.0 months (95% CI: 7.7-16.3 months). In particular, early

appearance of new contrast enhancing lesions within 6 months was found in 11 of the 37 patients (29.7%). In most cases, these patched or punctuated lesions were developed in the small area of overall tumor involvement at the initial stage and were strongly enhanced with the contrast dye (Fig. 1). Overall review of clinical course demonstrated that early appearance of new contrast enhancing lesions within 6 months was closely related to poor survival ($p < 0.001$ by log-rank test). Furthermore, early appearance of new enhancing lesions within 6 months was also a significant independent variable for tumor progression ($p < 0.001$ by log-rank test).

Treatment outcome

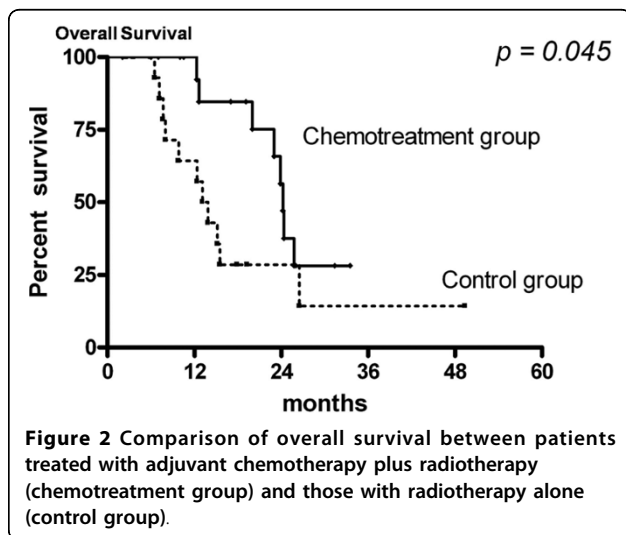
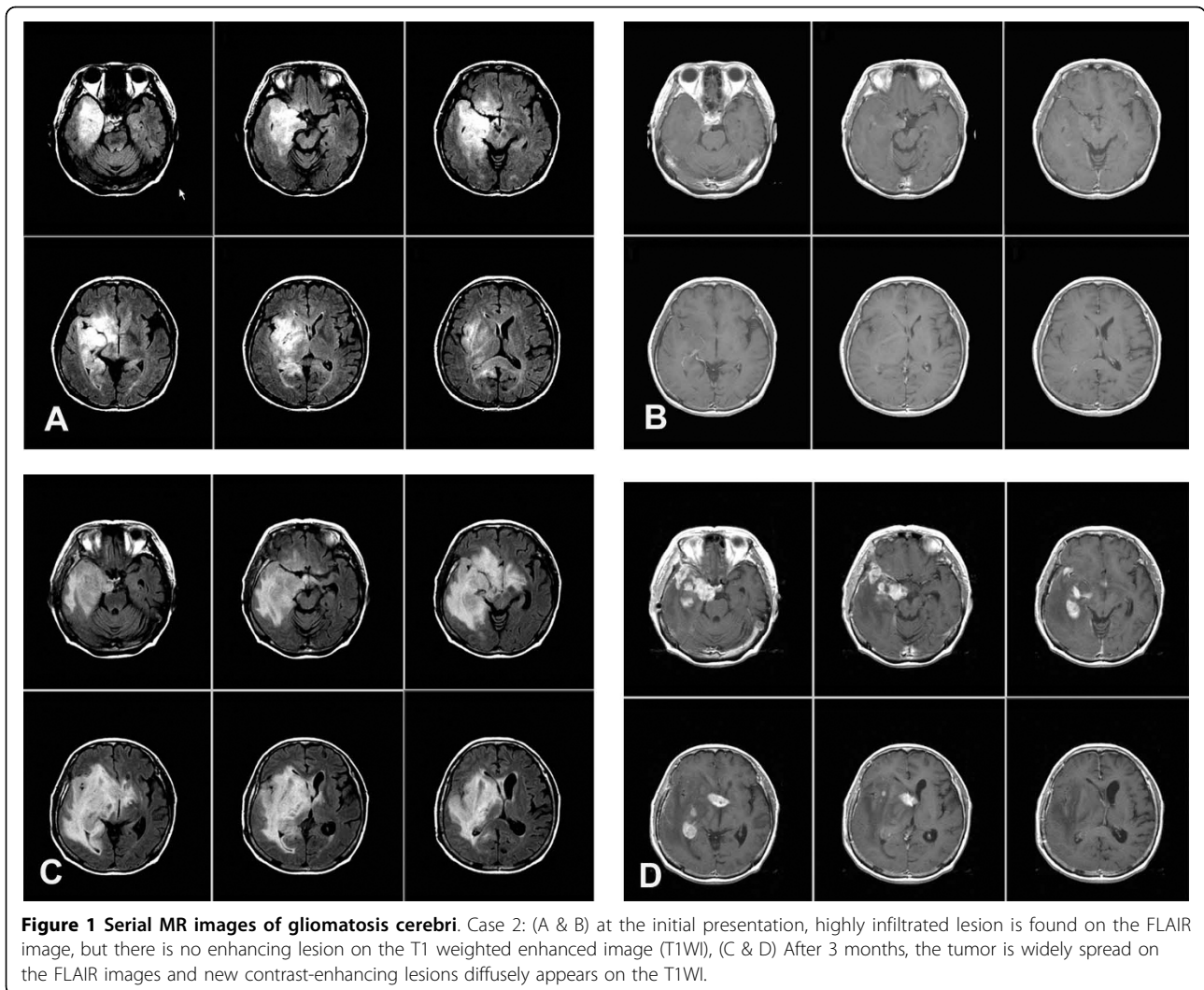
Twenty-five patients were still alive at the time of this analysis and the median follow-up period was 12.6 months (range: 7.1-49.4 months). Median overall survival in the chemotreatment group was 24.2 months (95% CI: 23.4-24.9 months), compared with 13.1 months (95% CI: 10.4-15.9 months) in the control group. Kaplan-Meier analysis showed that median overall survival in the chemotreatment group was longer than that in the control group ($p = 0.045$ by log-rank test, Fig. 2). Age, gender, KPS, cellular components, degree of resection and brainstem involvement were not identified as independent prognostic variables. For Cox proportional hazard model, no chemotherapy (HR 6.385, 95% CI: 1.8-22.6, $p = 0.004$) was strongly associated with poor survival even after adjustment for age, sex, KPS, cellular components, and brainstem involvement. Higher histological grade (HR 4.434, 95% CI: 1.312-14.982, $p = 0.017$) was also associated with dismal prognosis (table 2). Between patients treated with TMZ and those with nitrosourea-based chemotreatment, there was no significant difference of survival ($p > 0.05$ by log-rank test).

Median progression-free survival in the chemotreatment group was 16.0 months (95% CI: 11.7-20.2 months), compared with 6.0 months (95% CI: 4.9-7.1 months) in the control group. Adjuvant chemotherapy (OR 8.250, 95% CI: 1.8-38.7, $p = 0.007$ by log-rank test, Fig. 3) was a significant independent factor for progression after adjustment of age, sex, KPS, cellular components, and histological grade.

Discussion

Progression of GC: significance of the newly developed contrast-enhanced lesion

GC is an infrequent and controversial diagnosis, because the definition and pathophysiology have not been accurately defined yet. Recent studies using antemortem diagnostic criteria by MRI have revealed that the prognosis for GC is generally poor and the overall survival relatively short [1,2,6,8,9,21-27]. In the respective of radiological view, 19 of 38 patients in this study could



be classified as de novo (primary) GC, whereas the others resulted from the spreading of a focal glioma (secondary GC) [10]. Vates et al. suggested that GC begins as either a low- or high-grade neoplasm without a focal mass, which progresses to form a focal mass similar to the natural history of low grade glioma [11]. However, GC should not be diagnosed by histopathological finding, but by radiographic findings. Furthermore, in most cases, difficulties in interpreting histological specimen are attributable to scattering of tumor cells and small amount of tissue specimens obtained by stereotactic biopsy. Therefore, it was too difficult to clarify the specific histological types (astrocyte-dominant or oligodendroglial-dominant) based on the tissue specimen. In this study, an interval between early stage and tumor progression in GC was extremely variable in each other.

We speculated that this change of enhancement pattern might imply a malignant progression of GC. In the current study, we found that early appearance of new

Table 2 Cohort of patients with Gliomatosis Cerebri: Prognostic variables for survival

Independent variables	Univariate analysis	Multivariable analysis	Hazard ratio(R)	95% CI for Hazard ratio	
				Lower	Upper
Age (≤ 55 years)	<i>P</i> = 0.523		1.212	0.886	3.178
Sex	<i>P</i> = 0.872		1.082	0.395	2.886
KPS(≥ 70)	<i>P</i> = 0.454		0.825	0.564	4.867
Cellular component	<i>P</i> = 0.624		0.531	0.348	0.809
Histological grade	<i>P</i> = 0.023	<i>P</i> = 0.017	4.434	1.312	14.982
Adjuvant chemotherapy	<i>P</i> = 0.045	<i>P</i> = 0.004	6.385	1.885	22.685
Brainstem involvement	<i>P</i> = 0.952		2.312	0.285	13.524

patched or punctuated enhancing lesions was closely correlated with the poor survival and tumor progression. As a result, these findings supported that malignant transformation of GC is similar to that of low-grade gliomas. Tumor progression of GC used to be more rapid than that of low-grade gliomas, which can be explained by the following hypotheses. GC may contain highly invasive stem-like tumor cells and therefore shows a tendency to involve more lobes and progress rapidly [28]. Otherwise, it can be interpreted as a transformation from angiogenesis-independent growth to an angiogenesis-dependent phenotype driven by stem-like cells [29]. In the future, a detailed review of the clinical course in GC will contribute to our understanding of malignant progression of tumors [30].

Therapeutic effects of adjuvant chemotherapy for GC

To date, little is known about the therapeutic effect of adjuvant chemotherapy for GC. However, some researchers demonstrated that upfront TMZ treatment was effective for patients with GC [10,12,13]. By using a retrospective case-cohort study, we investigated the efficacy of adjuvant chemotherapy such as TMZ or

nitrosourea-based chemotherapy for GC. In this study, we demonstrated that adjuvant chemotherapy following radiotherapy was effective for the prolongation of survival and delay of tumor progression. This suggests that adjuvant chemotherapy as well as first-line chemotherapy also provide improvement of survival in patients with GC. Furthermore, multivariate analysis revealed that GC patients with higher histological grade had shorter survival and earlier tumor progression than those with lower histological grade. Therefore, during the follow-up period, higher histological grade at the initial presentation or earlier appearance of enhancement should warrant dismal prognosis.

However, it is not certain that adjuvant chemotherapy should be required following radiotherapy for GC, because this retrospective study has some drawbacks. Even though these two groups were relatively balanced with respect to known prognostic variables, they were not randomly-allocated groups, but were groups determined by physician’s preference. We should recognize that these selection biases could account for its effect on survival. Moreover, it was another important limitation in this study that chemotreatment group was composed of heterogeneous populations, for example, those treated with TMZ or nitrosourea-based chemotherapy.

Conclusion

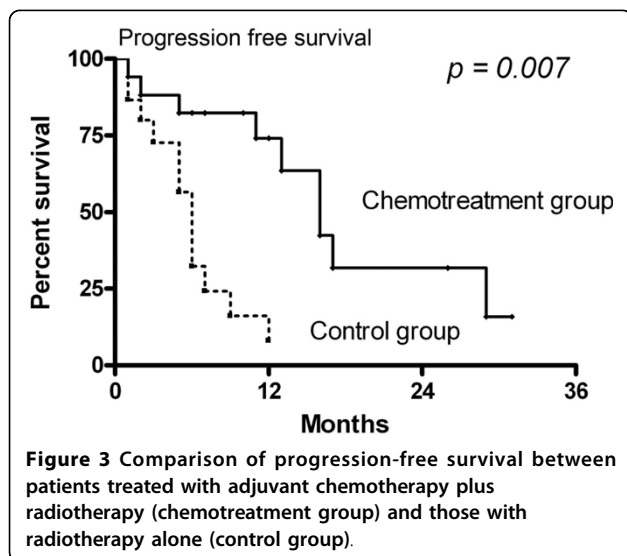
In conclusion, adjuvant chemotherapy following radiotherapy could prolong the survival in patients with GC. In addition, newly developed contrast-enhanced lesions on the follow-up MR images indicate the progression of GC.

Acknowledgements

This study was supported by a grant from Samsung Biomedical Research Institute (C-A7-410-1), by a grant of the Korea Healthcare technology R&D Project, Ministry for Health, Welfare & Family Affairs, Republic of Korea (A092255) and the Korea Science and Engineering foundation (KOSEF) grant funded by Korea government (MOST) (No. M10641000104-06N4100-10410).

Author details

¹Department of Neurosurgery, Samsung Medical Center, Sungkyunkwan University School of Medicine, Seoul, Korea. ²Department of Radiology, Center for Imaging Science, Samsung Medical Center, Sungkyunkwan



University School of Medicine, Seoul, Korea. ³Department of Pathology, Samsung Medical Center, Sungkyunkwan University School of Medicine, Seoul, Korea. ⁴Department of Radiation Oncology, Samsung Medical Center, Sungkyunkwan University School of Medicine, Seoul, Korea. ⁵Division of Hematology-Oncology, Department of Medicine, Samsung Medical Center, Sungkyunkwan University School of Medicine, Seoul, Korea.

Authors' contributions

DN was responsible for the conception and design of the study; DK and SK performed the collection and assembly of data; DK, SK, JL, KK, KP, and JK performed the statistical analysis and interpretation of data; DK, SK and YS participated in writing the manuscript; DL, WK, and DN revised the manuscript. All authors read and approved the final manuscript.

Competing interests

The authors declare that they have no competing interests.

Received: 24 December 2009 Accepted: 13 August 2010

Published: 13 August 2010

References

- Couch JR, Weiss SA: **Gliomatosis cerebri. Report of four cases and review of the literature.** *Neurology* 1974, **24**(6):504-511.
- del Carpio-O'Donovan R, Korah I, Salazar A, Melancon D: **Gliomatosis cerebri.** *Radiology* 1996, **198**(3):831-835.
- Artigas J, Cervos-Navarro J, Iglesias JR, Ebhardt G: **Gliomatosis cerebri: clinical and histological findings.** *Clin Neuropathol* 1985, **4**(4):135-148.
- Choi D, Schulz U, Seex K: **Gliomatosis cerebri: a brain tumour which is too difficult to treat?** *Scott Med J* 1998, **43**(3):84-86.
- Mawrin C, Kirches E, Schneider-Stock R, Scherlach C, Vorwerk C, Von Deimling A, Van Landeghem F, Meyermann R, Bornemann A, Muller A, Romeike B, Stoltenburg-Diding G, Wickboldt J, Pilz P, Dietzmann K: **Analysis of TP53 and PTEN in gliomatosis cerebri.** *Acta Neuropathol (Berl)* 2003, **105**(6):529-536.
- Kim DG, Yang HJ, Park IA, Chi JG, Jung HW, Han DH, Choi KS, Cho BK: **Gliomatosis cerebri: clinical features, treatment, and prognosis.** *Acta Neurochir (Wien)* 1998, **140**(8):755-762.
- Perkins GH, Schomer DF, Fuller GN, Allen PK, Maor MH: **Gliomatosis cerebri: improved outcome with radiotherapy.** *Int J Radiat Oncol Biol Phys* 2003, **56**(4):1137-1146.
- Louis DN, Ohgaki H, Wiestler OD, Cavenee WK, Burger PC, Jouvet A, Scheithauer BW, Kleihues P: **The 2007 WHO classification of tumors of the central nervous system.** *Acta Neuropathol* 2007, **114**(2):97-109.
- Jennings MT, Frenchman M, Shehab T, Johnson MD, Creasy J, LaPorte K, Dettbarn WD: **Gliomatosis cerebri presenting as intractable epilepsy during early childhood.** *J Child Neurol* 1995, **10**(1):37-45.
- Sanson M, Cartalat-Carel S, Taillibert S, Napolitano M, Djafari L, Cougnard J, Gervais H, Laigle F, Carpentier A, Mokhtari K, Taillandier L, Chinot O, Duffau H, Honnorat J, Hoang-Xuan K, Delattre JY: **Initial chemotherapy in gliomatosis cerebri.** *Neurology* 2004, **63**(2):270-275.
- Vates GE, Chang S, Lamborn KR, Prados M, Berger MS: **Gliomatosis cerebri: a review of 22 cases.** *Neurosurgery* 2003, **53**(2):261-271, discussion 271.
- Sanson M, Napolitano M, Cartalat-Carel S, Taillibert S: **Gliomatosis cerebri.** *Rev Neurol (Paris)* 2005, **161**(2):173-181.
- Kaloshi G, Everhard S, Laigle-Donadey F, Marie Y, Navarro S, Mokhtari K, Idbaih A, Ducray F, Thillet J, Hoang-Xuan K, Delattre JY, Sanson M: **Genetic markers predictive of chemosensitivity and outcome in gliomatosis cerebri.** *Neurology* 2008, **70**(8):590-595.
- Chaichana KL, McGirt MJ, Latta J, Olivi A, Quinones-Hinojosa A: **Recurrence and malignant degeneration after resection of adult hemispheric low-grade gliomas.** *J Neurosurg* 2010, **112**(1):10-7.
- Chaichana KL, McGirt MJ, Niranjan A, Olivi A, Burger PC, Quinones-Hinojosa A: **Prognostic significance of contrast-enhancing low-grade gliomas in adults and a review of the literature.** *Neurol Res* 2009, **31**(9):931-9.
- Cha S, Johnson G, Wadghiri YZ, Jin O, Babb J, Zagzag D, Turnbull DH: **Dynamic, contrast-enhanced perfusion MRI in mouse gliomas: correlation with histopathology.** *Magn Reson Med* 2003, **49**(5):848-855.
- Law M, Hamburger M, Johnson G, Inglese M, Londono A, Golfinos J, Zagzag D, Knopp EA: **Differentiating surgical from non-surgical lesions using perfusion MR imaging and proton MR spectroscopic imaging.** *Technol Cancer Res Treat* 2004, **3**(6):557-565.
- Nagesh V, Chenevert TL, Tsien CI, Ross BD, Lawrence TS, Junck L, Cao Y: **Quantitative characterization of hemodynamic properties and vasculature dysfunction of high-grade gliomas.** *NMR Biomed* 2007, **20**(6):566-577.
- Pivawer G, Law M, Zagzag D: **Perfusion MR imaging and proton MR spectroscopic imaging in differentiating necrotizing cerebritis from glioblastoma multiforme.** *Magn Reson Imaging* 2007, **25**(2):238-243.
- Yang S, Law M, Zagzag D, Wu HH, Cha S, Golfinos JG, Knopp EA, Johnson G: **Dynamic contrast-enhanced perfusion MR imaging measurements of endothelial permeability: differentiation between atypical and typical meningiomas.** *AJNR Am J Neuroradiol* 2003, **24**(8):1554-1559.
- Shin YM, Chang KH, Han MH, Myung NH, Chi JG, Cha SH, Han MC: **Gliomatosis cerebri: comparison of MR and CT features.** *AJR Am J Roentgenol* 1993, **161**(4):859-862.
- Pyhtinen J: **Proton MR spectroscopy in gliomatosis cerebri.** *Neuroradiology* 2000, **42**(8):612-615.
- Pyhtinen J, Paakko E: **A difficult diagnosis of gliomatosis cerebri.** *Neuroradiology* 1996, **38**(5):444-448.
- Spagnoli MV, Grossman RI, Packer RJ, Hackney DB, Goldberg HI, Zimmerman RA, Bilaniuk LT: **Magnetic resonance imaging determination of gliomatosis cerebri.** *Neuroradiology* 1987, **29**(1):15-18.
- Peretti-Viton P, Brunel H, Chinot O, Daniel C, Barrie M, Bouvier C, Figarella-Branger D, Fuentes S, Dufour H, Grisoli F: **Histological and MR correlations in Gliomatosis cerebri.** *J Neurooncol* 2002, **59**(3):249-259.
- Keene DL, Jimenez C, Hsu E: **MRI diagnosis of gliomatosis cerebri.** *Pediatr Neurol* 1999, **20**(2):148-151.
- Essig M, Schlemmer HP, Tronnier V, Hawighorst H, Wirtz R, van Kaick G: **Fluid-attenuated inversion-recovery MR imaging of gliomatosis cerebri.** *Eur Radiol* 2001, **11**(2):303-308.
- Sanai N, Alvarez-Buylla A, Berger MS: **Neural stem cells and the origin of gliomas.** *N Engl J Med* 2005, **353**(8):811-822.
- Sakariassen PO, Prestegarden L, Wang J, Skafnesmo KO, Mahesparan R, Molthoff C, Sminia P, Sundlisaeter E, Misra A, Tysnes BB, Chekenya M, Peters H, Lende G, Kalland KH, Øyan AM, Petersen K, Jonassen I, van der Kogel A, Feuerstein BG, Terzis AJ, Bjerkvig R, Enger PØ: **Angiogenesis-independent tumor growth mediated by stem-like cancer cells.** *Proc Natl Acad Sci USA* 2006, **103**(44):16466-16471.
- Kong DS, Kim MH, Park WY, Suh YL, Lee JJ, Park K, Kim JH, Nam DH: **The progression of gliomas is associated with cancer stem cell phenotype.** *Oncol Rep* 2008, **19**(3):639-643.

Pre-publication history

The pre-publication history for this paper can be accessed here:
<http://www.biomedcentral.com/1471-2407/10/424/prepub>

doi:10.1186/1471-2407-10-424

Cite this article as: Kong et al.: Impact of adjuvant chemotherapy for gliomatosis cerebri. *BMC Cancer* 2010 **10**:424.

Submit your manuscript to BioMed Central and take full advantage of:

- Convenient online submission
- Thorough peer review
- No space constraints or color figure charges
- Immediate publication on acceptance
- Inclusion in PubMed, CAS, Scopus and Google Scholar
- Research which is freely available for redistribution

Submit your manuscript at
www.biomedcentral.com/submit

